

**DAIKIN**



REV	00
Date	03/2023
Supersedes	-

**Quick Guide**  
**D-EPMAP00203-23\_EN**

## **License Manager v. 2.0**

## **Index**

1	APP INSTALLATION .....	3
2	APP CONFIGURATION .....	3
3	APP USAGE .....	4
3.1	PLC .....	4
3.1.1	PLC info.....	4
3.2	TOOLS .....	5
4	LICENSES MANAGEMENT .....	6
4.1.1	Software Options management.....	6
4.1.2	Pending Licenses .....	7
5	USEFUL INFO .....	7

## **1 APP INSTALLATION**

License Manager can be downloaded from the App Store for iOS and Play Store for Android devices.

## **2 APP CONFIGURATION**

To allow License Manager to communicate with the unit, make sure you are connected to its Wi-Fi network: open the Wi-Fi settings on your device and select the unit network with the Daikin prefix (*Daikin – XXXX*, where *XXXX* is the unit serial number).

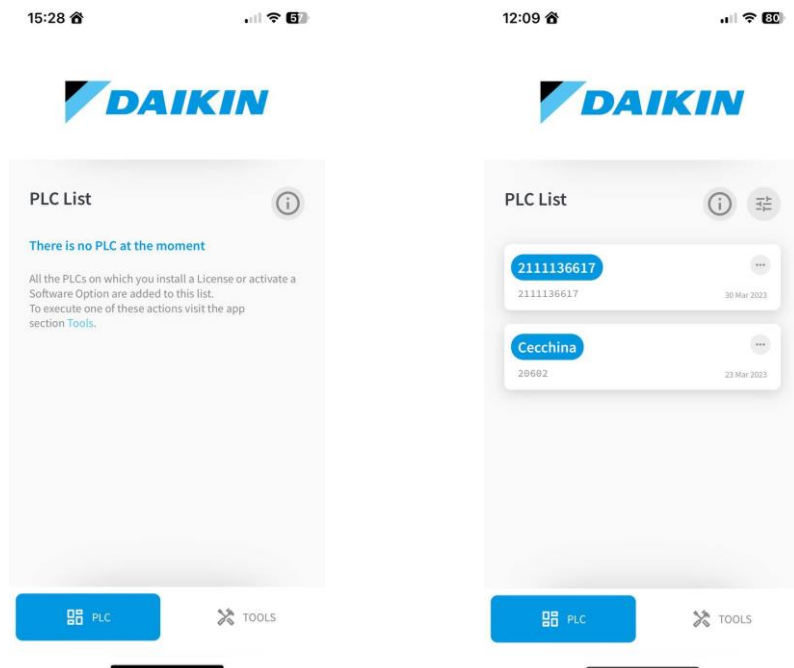
### 3 APP USAGE

The app is divided in two tabs: PLC and TOOLS.

#### 3.1 PLC

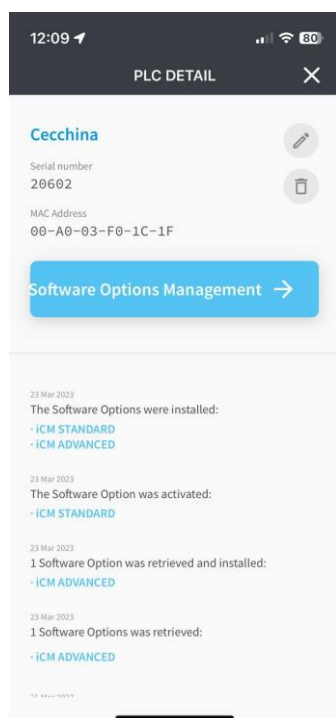
It shows the list of PLCs with which the user has connected and performed an operation (license generation/recovery, software activation/recovery option).

The list can be ordered according to a series of parameters (name, modification date, serial number).



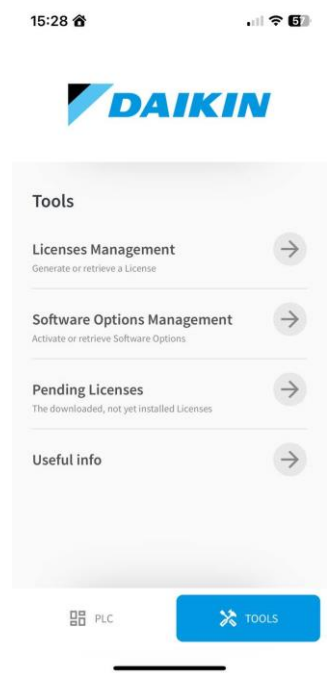
##### 3.1.1 PLC info

Selecting a PLC you can see its information (serial number and mac address) and the list of operations performed on it. You can rename/delete a PLC and activate the Software Options Management stream.



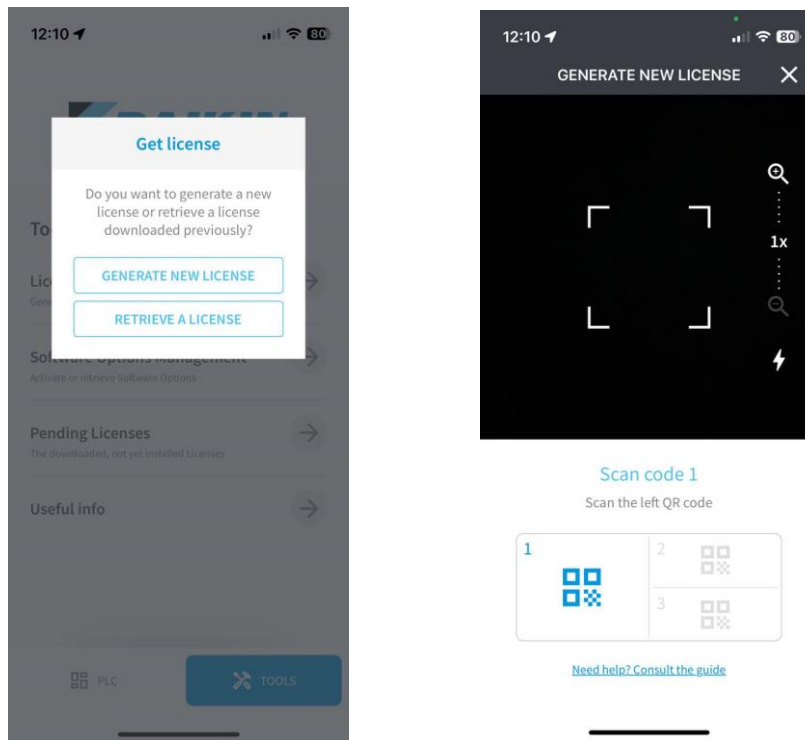
### 3.2 TOOLS

It contains all possible operations that can be done through the app.



## 4 LICENSES MANAGEMENT

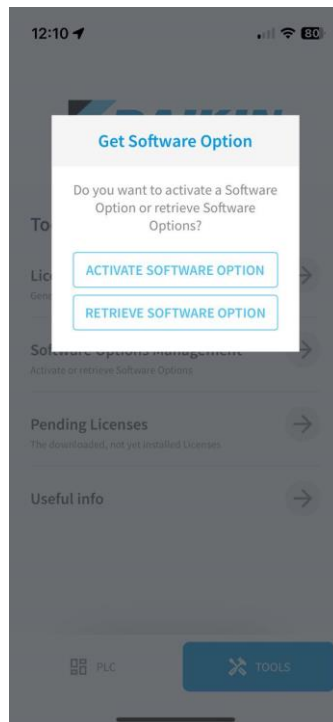
You can generate a new license or retrieve an old one.



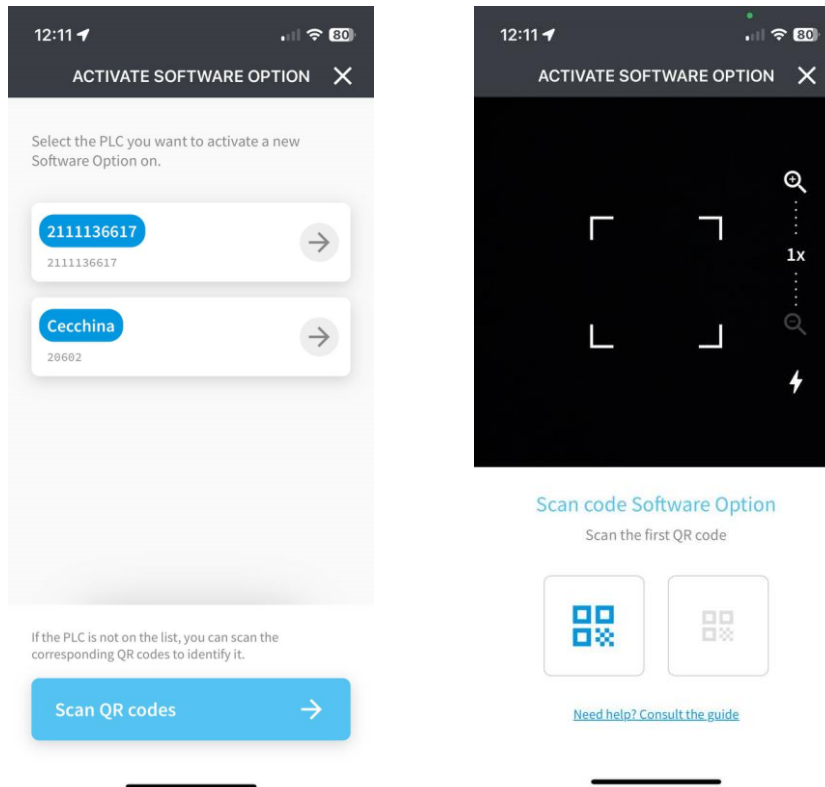
You must scan 3 differences QR codes; clicking the link at the bottom you will find a detailed guide.

### 4.1.1 Software Options management

You can activate a new option or retrieve the old options.



You can choose on an already memorized PLC or you can scan the QR code of a new one.



Clicking the link at the bottom you will find a detailed guide.

#### 4.1.2 Pending Licenses

Here you can find the licenses pending due to some error that can be sent back to the related PLC, shared, or deleted.

### 5 USEFUL INFO

In this section you can find guides and documents.

*The present publication is drawn up only for technical support and it does not constitute a binding commitment for Daikin Applied Europe S.p.A.. Its content has been written by Daikin Applied Europe S.p.A. to the best of its knowledge. No explicit or implied warranty is given for the completeness, accuracy, reliability of its contents. All data and specifications contained therein may be subject to change without notice. Refer to the data communicated at the time of the order. Daikin Applied Europe S.p.A. explicitly rejects any liability for any direct or indirect damage, in the broadest sense, arising from or related to the use and/or interpretation of this publication. All content is copyrighted by Daikin Applied Europe S.p.A..*

**DAIKIN APPLIED EUROPE S.p.A.**

Via Piani di Santa Maria, 72 - 00072 Ariccia (Roma) - Italy

Tel: (+39) 06 93 73 11 - Fax: (+39) 06 93 74 014

<http://www.daikinapplied.eu>