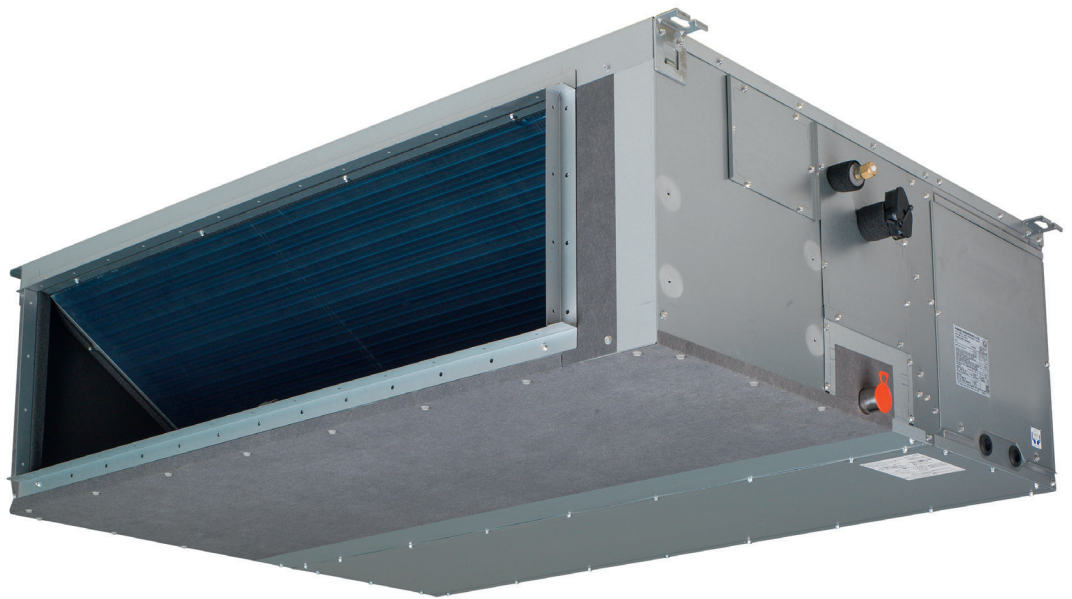


# Concealed ceiling unit with high ESP Air Conditioning Technical Data FXMA-A



FXMA50A5VEB  
FXMA63A5VEB  
FXMA80A5VEB  
FXMA100A5VEB  
FXMA125A5VEB  
FXMA200AXVMB  
FXMA250AXVMB



# TABLE OF CONTENTS

# FXMA-A

---

|    |                                 |    |
|----|---------------------------------|----|
| 1  | <b>Features</b>                 | 4  |
|    | FXMA-A                          | 4  |
| 2  | <b>Specifications</b>           | 5  |
| 3  | <b>Safety device settings</b>   | 9  |
| 4  | <b>Options</b>                  | 10 |
| 5  | <b>Capacity tables</b>          | 11 |
|    | Cooling/Heating Capacity Tables | 11 |
| 6  | <b>Dimensional drawings</b>     | 12 |
| 7  | <b>Centre of gravity</b>        | 14 |
| 8  | <b>Piping diagrams</b>          | 15 |
| 9  | <b>Wiring diagrams</b>          | 17 |
|    | Wiring Diagrams - Single Phase  | 17 |
| 10 | <b>Sound data</b>               | 19 |
|    | Sound Power Spectrum            | 19 |
|    | Sound Pressure Spectrum         | 23 |
| 11 | <b>Fan characteristics</b>      | 27 |

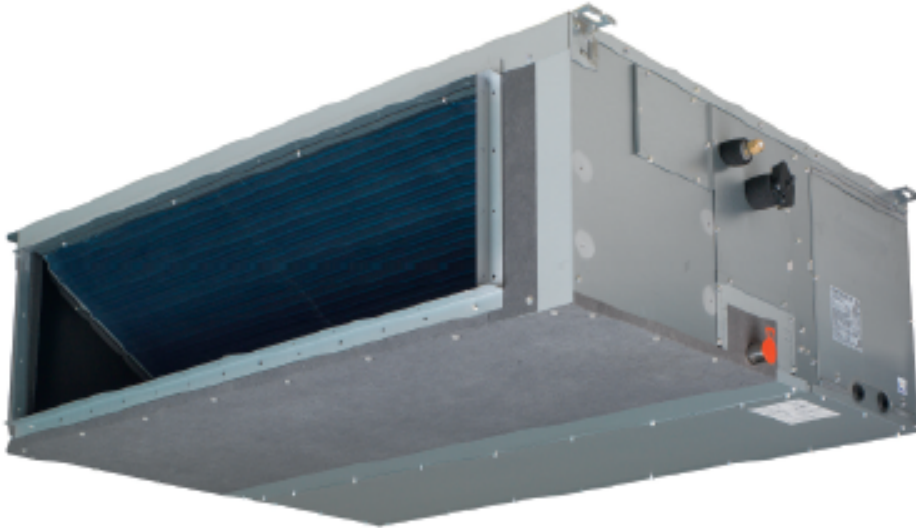
# 1 Features















## 1 - 1 FXMA-A

Ideal for large sized spaces ESP up to 270 Pa

1

- › Optimised design for R-32 refrigerant
- › High external static pressure up to 200Pa facilitates extensive duct and grille network
- › Possibility to change ESP via wired remote control allows optimisation of the supply air volume
- › Discretely concealed in the wall: only the suction and discharge grilles are visible
- › Large capacity unit: up to 31.5 kW heating capacity



- |   |   |   |   |   |   |   |   |   |
|---|---|---|---|---|---|---|---|---|
|  |  |  |  |  |  |  |  |      |
| Onecta app (optional) (optional)  | Home leave operation  | Fan only  | Auto cooling-heating changeover   | Fan speed steps (FXMA50-125: 3 steps; FXMA200-250: 3 steps + auto)                  | Dry programme   | Air filter (pre filter)   | Weekly timer (optional)   | Infrared remote control (optional - must be combined with Madoka wired remote controller) |
|  |  |  |  |  |   |   |   |   |
| Wired remote control (optional)   | Centralised control (optional)  | Auto-restart  | Self diagnosis  | Drain pump kit  |   |   |   |   |

## 2 Specifications

### 2 - 1 Specifications

| Technical specifications        |                      |                     |                        | FXMA50A             | FXMA63A | FXMA80A | FXMA100A | FXMA125A |       |
|---------------------------------|----------------------|---------------------|------------------------|---------------------|---------|---------|----------|----------|-------|
| Cooling capacity                | Sensible capacity    | At high fan speed   | kW                     | 4.0                 | 5.1     | 6.7     | 8.1      | 10.3     |       |
|                                 |                      | At medium fan speed | kW                     | 3.4                 | 4.2     | 5.6     | 6.3      | 8.4      |       |
|                                 |                      | At low fan speed    | kW                     | 2.9                 | 3.4     | 4.0     | 4.2      | 6.6      |       |
|                                 | Latent capacity      | At high fan speed   | kW                     | 1.6                 | 2.0     | 2.3     | 3.1      | 3.7      |       |
|                                 |                      | At medium fan speed | kW                     | 1.3                 | 1.6     | 1.9     | 2.4      | 3.0      |       |
|                                 |                      | At low fan speed    | kW                     | 1.1                 | 1.3     | 1.4     | 1.6      | 2.4      |       |
|                                 | Total capacity       | At high fan speed   | kW                     | 5.6                 | 7.1     | 9.0     | 11.2     | 14.0     |       |
| At medium fan speed             |                      | kW                  | 4.7                    | 5.8                 | 7.5     | 8.7     | 11.4     |          |       |
| At low fan speed                |                      | kW                  | 4.0                    | 4.7                 | 5.4     | 5.8     | 9.0      |          |       |
| Heating capacity                | Total capacity       | At high fan speed   | kW                     | 6.3                 | 8.0     | 10.0    | 12.5     | 16.0     |       |
|                                 |                      | At medium fan speed | kW                     | 5.1                 | 6.3     | 8.3     | 9.3      | 12.8     |       |
|                                 |                      | At low fan speed    | kW                     | 4.1                 | 5.0     | 5.9     | 6.0      | 9.8      |       |
| Power input - 50Hz              | Cooling              | At high fan speed   | kW                     | 0.125               | 0.140   | 0.198   | 0.191    | 0.254    |       |
|                                 |                      | At medium fan speed | kW                     | 0.100               | 0.106   | 0.150   | 0.121    | 0.162    |       |
|                                 |                      | At low fan speed    | kW                     | 0.079               | 0.085   | 0.110   | 0.082    | 0.107    |       |
|                                 | Heating              | At high fan speed   | kW                     | 0.125               | 0.140   | 0.198   | 0.191    | 0.254    |       |
|                                 |                      | At medium fan speed | kW                     | 0.100               | 0.106   | 0.150   | 0.121    | 0.162    |       |
|                                 |                      | At low fan speed    | kW                     | 0.079               | 0.085   | 0.110   | 0.082    | 0.107    |       |
| Power input - 60Hz              | Cooling              | At high fan speed   | kW                     | 0.125               | 0.140   | 0.198   | 0.191    | 0.254    |       |
|                                 | Heating              | At high fan speed   | kW                     | 0.125               | 0.140   | 0.198   | 0.191    | 0.254    |       |
| Dimensions                      | Unit                 | Height              | mm                     | 300                 |         |         |          |          |       |
|                                 |                      | Width               | mm                     | 1,000               |         | 1,400   |          |          |       |
|                                 |                      | Depth               | mm                     | 700                 |         |         |          |          |       |
|                                 | Packed unit          | Height              | mm                     | 355                 |         |         |          |          |       |
|                                 |                      | Width               | mm                     | 1,220               |         | 1,620   |          |          |       |
|                                 |                      | Depth               | mm                     | 900                 |         |         |          |          |       |
| Weight                          | Unit                 | kg                  | 35                     |                     |         | 46      |          |          |       |
|                                 | Packed unit          | kg                  | 39                     |                     |         | 49      |          |          |       |
| Casing                          | Colour               |                     | Unpainted              |                     |         |         |          |          |       |
|                                 | Material             |                     | Galvanised steel plate |                     |         |         |          |          |       |
| Required ceiling void >         |                      | mm                  | 350                    |                     |         |         |          |          |       |
| Heat exchanger                  | Inside length        | mm                  | 740                    |                     |         | 1,140   |          |          |       |
|                                 |                      | Quantity            | 3                      |                     |         |         |          |          |       |
|                                 | Fin pitch            | mm                  | 1.75                   |                     |         |         |          |          |       |
|                                 |                      | Quantity            | 7                      |                     |         | 11      |          |          |       |
|                                 | Face area            | m <sup>2</sup>      | 0.249                  |                     |         | 0.383   |          |          |       |
| Heat exchanger                  | Stages               | Quantity            | 16                     |                     |         |         |          |          |       |
|                                 | Empty tubeplate hole | Quantity            | 0                      |                     |         |         |          |          |       |
|                                 | Tube type            |                     | ø7 Hi-XD               |                     |         |         |          |          |       |
|                                 | Fin                  | Type                | MLH7 Fin (Hydrophilia) |                     |         |         |          |          |       |
| Fan                             | Type                 |                     | Sirocco fan            |                     |         |         |          |          |       |
|                                 |                      | Quantity            | 2                      |                     |         | 3       |          |          |       |
|                                 | Air flow rate - 50Hz | Cooling             | At high fan speed      | m <sup>3</sup> /min | 18.0    | 19.5    | 25.0     | 32.0     | 36.0  |
|                                 |                      |                     | At medium fan speed    | m <sup>3</sup> /min | 16.5    | 17.5    | 22.5     | 27.0     | 30.0  |
|                                 |                      |                     | At low fan speed       | m <sup>3</sup> /min | 15.0    | 16.0    | 20.0     | 23.0     | 26.0  |
|                                 |                      | Heating             | At high fan speed      | m <sup>3</sup> /min | 18.0    | 19.5    | 25.0     | 32.0     | 36.0  |
|                                 |                      |                     | At medium fan speed    | m <sup>3</sup> /min | 16.5    | 17.5    | 22.5     | 27.0     | 30.0  |
|                                 |                      |                     | At low fan speed       | m <sup>3</sup> /min | 15.0    | 16.0    | 20.0     | 23.0     | 26.0  |
|                                 | Air flow rate - 60Hz | Cooling             | At high fan speed      | cfm                 | 636     | 689     | 883      | 1,130    | 1,271 |
|                                 |                      |                     | At medium fan speed    | cfm                 | 583     | 618     | 795      | 953      | 1,059 |
|                                 |                      |                     | At low fan speed       | cfm                 | 530     | 565     | 706      | 812      | 918   |
|                                 |                      | Heating             | At high fan speed      | cfm                 | 636     | 689     | 883      | 1,130    | 1,271 |
| At medium fan speed             |                      |                     | cfm                    | 583                 | 618     | 795     | 953      | 1,059    |       |
| At low fan speed                |                      |                     | cfm                    | 530                 | 565     | 706     | 812      | 918      |       |
| External static pressure - 50Hz | Factory set          | Pa                  | 100                    |                     |         |         |          |          |       |
|                                 |                      | High                | Pa                     | 200                 |         |         |          |          |       |
|                                 | High                 | Pa                  | 100                    |                     |         |         |          |          |       |
|                                 |                      | 60Hz                | Pa                     | 200                 |         |         |          |          |       |
| Fan motor                       | Drive                |                     | Direct drive           |                     |         |         |          |          |       |

## 2 Specifications

### 2 - 1 Specifications

2

| Technical specifications |                         |                     |     | FXMA50A                           | FXMA63A                    | FXMA80A                         | FXMA100A | FXMA125A |
|--------------------------|-------------------------|---------------------|-----|-----------------------------------|----------------------------|---------------------------------|----------|----------|
| Sound power level        | Cooling                 | At high fan speed   | dBa | 61.0                              | 64.0                       | 67.0                            | 65.0     | 70.0     |
|                          |                         | At medium fan speed | dBa | 60.0                              | 61.0                       | 64.0                            | 61.0     | 66.0     |
|                          |                         | At low fan speed    | dBa | 58.0                              | 59.0                       | 62.0                            | 56.0     | 62.0     |
|                          | Heating                 | At high fan speed   | dBa | 62.0                              | 65.0                       | 68.0                            | 66.0     | 71.0     |
|                          |                         | At medium fan speed | dBa | 61.0                              | 62.0                       | 65.0                            | 62.0     | 67.0     |
|                          |                         | At low fan speed    | dBa | 59.0                              | 60.0                       | 63.0                            | 57.0     | 63.0     |
| Sound pressure level     | Cooling                 | At high fan speed   | dBa | 41.0                              | 42.0                       | 43.0                            |          | 44.0     |
|                          |                         | At medium fan speed | dBa | 39.0                              | 40.0                       | 41.0                            |          | 42.0     |
|                          |                         | At low fan speed    | dBa | 37.0                              | 38.0                       | 39.0                            |          | 40.0     |
|                          | Heating                 | At high fan speed   | dBa | 41.0                              | 42.0                       | 43.0                            |          | 44.0     |
|                          |                         | At medium fan speed | dBa | 39.0                              | 40.0                       | 41.0                            |          | 42.0     |
|                          |                         | At low fan speed    | dBa | 37.0                              | 38.0                       | 39.0                            |          | 40.0     |
| Fan motor                | Quantity                |                     |     |                                   | 1                          |                                 |          |          |
|                          | Speed                   | Steps               |     |                                   |                            | 3                               |          |          |
| Fan motor                | Output                  | Max                 | W   | 350                               |                            |                                 |          |          |
| Refrigerant              | Type                    |                     |     |                                   | R-32                       |                                 |          |          |
|                          | GWP                     |                     |     |                                   | 675                        |                                 |          |          |
|                          | Control                 |                     |     |                                   | Electronic expansion valve |                                 |          |          |
| Piping connections       | Liquid                  | Type                |     |                                   |                            | Flare connection                |          |          |
|                          |                         | OD                  | mm  |                                   |                            | 6.35                            | 9.52     |          |
|                          | Gas                     | Type                |     |                                   |                            | Flare connection                |          |          |
|                          |                         | OD                  | mm  |                                   |                            | 12.70                           | 15.90    |          |
| Drain                    |                         |                     |     | VP25 (I.D. 25/O.D. 32)            |                            |                                 |          |          |
| Heat insulation          |                         |                     |     | Foamed polystyrene / polyethylene |                            |                                 |          |          |
| Air filter               | Type                    |                     |     |                                   | Resin net                  |                                 |          |          |
| Safety devices           | Item                    | 01                  |     |                                   |                            | PC board fuse                   |          |          |
|                          |                         | 02                  |     |                                   |                            | Fan motor overcurrent protector |          |          |
| Control systems          | Infrared remote control |                     |     |                                   | BRC4C65 / BRC4C66          |                                 |          |          |
|                          | Wired remote control    |                     |     |                                   | BRC1H52W/S/K               |                                 |          |          |

| Technical specifications |                   |                     |                     | FXMA200A | FXMA250A               |     |
|--------------------------|-------------------|---------------------|---------------------|----------|------------------------|-----|
| Cooling capacity         | Sensible capacity | At high fan speed   | kW                  | 16.4     | 20.4                   |     |
|                          |                   | Nom.                | kW                  | 22.4     | 28.0                   |     |
|                          | Sensible capacity | At medium fan speed | kW                  | 13.9     | 17.5                   |     |
| Heating capacity         | Nom.              | kW                  | 25.0                | 31.5     |                        |     |
| Cooling capacity         | Sensible capacity | At low fan speed    | kW                  | 12.5     | 15.3                   |     |
|                          |                   | Latent capacity     | At high fan speed   | kW       | 6.0                    | 7.6 |
|                          |                   |                     | At medium fan speed | kW       | 5.1                    | 6.5 |
|                          | At low fan speed  |                     | kW                  | 4.5      | 5.7                    |     |
|                          | Total capacity    | At high fan speed   | kW                  | 22.4     | 28.0                   |     |
|                          |                   | At medium fan speed | kW                  | 19       | 24                     |     |
| At low fan speed         |                   | kW                  | 17                  | 21       |                        |     |
| Heating capacity         | Total capacity    | At high fan speed   | kW                  | 25.0     | 31.5                   |     |
|                          |                   | At medium fan speed | kW                  | 20.5     | 27.0                   |     |
|                          |                   | At low fan speed    | kW                  | 18       | 22                     |     |
| Power input - 50Hz       | Cooling           | At high fan speed   | kW                  | 0.54     | 0.65                   |     |
|                          |                   | At medium fan speed | kW                  | 0.258    | 0.430                  |     |
|                          |                   | At low fan speed    | kW                  | 0.167    | 0.246                  |     |
|                          | Heating           | At high fan speed   | kW                  | 0.54     | 0.65                   |     |
|                          |                   | At medium fan speed | kW                  | 0.258    | 0.430                  |     |
|                          |                   | At low fan speed    | kW                  | 0.167    | 0.246                  |     |
| Power input - 60Hz       | Cooling           | At high fan speed   | kW                  | 0.54     | 0.65                   |     |
|                          | Heating           | At high fan speed   | kW                  | 0.54     | 0.65                   |     |
| Dimensions               | Unit              | Height              | mm                  | 470      |                        |     |
|                          |                   | Width               | mm                  | 1,490    |                        |     |
|                          |                   | Depth               | mm                  | 1,100    |                        |     |
|                          | Packed unit       | Height              | mm                  | 1,319    |                        |     |
|                          |                   | Width               | mm                  | 1,724    |                        |     |
|                          |                   | Depth               | mm                  | 511      |                        |     |
| Weight                   | Unit              | kg                  | 105                 | 115      |                        |     |
|                          | Packed unit       | kg                  | 124                 | 135      |                        |     |
| Casing                   | Colour            |                     |                     |          | Unpainted              |     |
|                          | Material          |                     |                     |          | Galvanised steel plate |     |
| Heat exchanger           | Inside length     | mm                  | 1,260               |          |                        |     |
|                          | Outside length    | mm                  | 1,260               |          |                        |     |
|                          | Rows              | Quantity            | 2                   |          | 3                      |     |
|                          | Fin pitch         | mm                  | 1.4                 |          |                        |     |

## 2 Specifications

### 2 - 1 Specifications

| Technical specifications        |                                 |                            |                                 | FXMA200A            | FXMA250A    |             |
|---------------------------------|---------------------------------|----------------------------|---------------------------------|---------------------|-------------|-------------|
| Heat exchanger                  | Passes                          | Quantity                   |                                 | 16                  |             |             |
|                                 | Face area                       |                            | m <sup>2</sup>                  | 0.85                |             |             |
|                                 | Stages                          | Quantity                   |                                 | 32                  |             |             |
|                                 | Empty tubeplate hole            | Quantity                   |                                 | 0                   |             |             |
|                                 | Tube type                       |                            |                                 |                     | ø7 Hi-XU    |             |
|                                 | Fin                             | Type                       |                                 |                     |             | Raise Lance |
| Fan                             | Type                            |                            |                                 |                     | Sirocco fan |             |
|                                 | Quantity                        |                            |                                 |                     | 2           |             |
|                                 | Air flow rate - 50Hz            | Cooling                    | At high fan speed               | m <sup>3</sup> /min | 62          | 74          |
|                                 |                                 |                            | At medium fan speed             | m <sup>3</sup> /min | 48          | 64          |
|                                 |                                 |                            | At low fan speed                | m <sup>3</sup> /min | 41          | 52          |
|                                 |                                 | Heating                    | At high fan speed               | m <sup>3</sup> /min | 62          | 74          |
|                                 |                                 |                            | At medium fan speed             | m <sup>3</sup> /min | 48          | 64          |
|                                 |                                 |                            | At low fan speed                | m <sup>3</sup> /min | 41          | 52          |
|                                 | Air flow rate - 60Hz            | Cooling                    | At high fan speed               | cfm                 | 2,190       | 2,613       |
|                                 |                                 |                            | At medium fan speed             | cfm                 | 1,695       | 2,260       |
|                                 |                                 |                            | At low fan speed                | cfm                 | 1,448       | 1,836       |
|                                 |                                 | Heating                    | At high fan speed               | cfm                 | 2,190       | 2,613       |
|                                 |                                 |                            | At medium fan speed             | cfm                 | 1,695       | 2,260       |
|                                 |                                 |                            | At low fan speed                | cfm                 | 1,448       | 1,836       |
|                                 | External static pressure - 50Hz | Factory set                | Pa                              | 150                 |             |             |
|                                 |                                 | High                       | Pa                              | 250                 |             |             |
| Low                             |                                 | Pa                         | 50                              |                     |             |             |
| External static pressure - 60Hz | Factory set                     | Pa                         | 150                             |                     |             |             |
|                                 | High                            | Pa                         | 250                             |                     |             |             |
|                                 | Low                             | Pa                         | 50                              |                     |             |             |
| Fan motor                       | Drive                           | Direct drive               |                                 |                     |             |             |
| Sound power level               | Cooling                         | At high fan speed          | dB(A)                           | 75.0                | 76.0        |             |
|                                 |                                 | At medium fan speed        | dB(A)                           | 74.0                | 75.0        |             |
|                                 |                                 | At low fan speed           | dB(A)                           | 72.0                | 73.0        |             |
|                                 | Heating                         | At high fan speed          | dB(A)                           | 75.0                | 76.0        |             |
|                                 |                                 | At medium fan speed        | dB(A)                           | 74.0                | 75.0        |             |
|                                 |                                 | At low fan speed           | dB(A)                           | 72.0                | 73.0        |             |
| Sound pressure level            | Cooling                         | At high fan speed          | dB(A)                           | 48.0                |             |             |
|                                 |                                 | At medium fan speed        | dB(A)                           | 46.5                |             |             |
|                                 |                                 | At low fan speed           | dB(A)                           | 45.0                |             |             |
| Sound pressure level            | Heating                         | At high fan speed          | dB(A)                           | 48.0                |             |             |
|                                 |                                 | At medium fan speed        | dB(A)                           | 46.5                |             |             |
| Fan motor                       | Quantity                        |                            |                                 |                     | 1           |             |
|                                 | Model                           |                            |                                 |                     | DMUD8C4DK   | ERC8804ADS  |
|                                 | Speed                           | Steps                      |                                 |                     |             | 3           |
|                                 | Output                          | Max                        | W                               | 648                 | 750         |             |
| Refrigerant                     | Type                            | R-32                       |                                 |                     |             |             |
|                                 | GWP                             | 675                        |                                 |                     |             |             |
|                                 | Control                         | Electronic expansion valve |                                 |                     |             |             |
| Piping connections              | Liquid                          | Type                       | Flare connection                |                     |             |             |
|                                 |                                 | OD                         | mm                              | 9.5                 |             |             |
|                                 | Gas                             | Type                       | Flange                          |                     |             |             |
|                                 |                                 | OD                         | mm                              | 19.1                |             |             |
|                                 | Drain                           | BSP1                       |                                 |                     |             |             |
| Heat insulation                 | Foamed Polyethylene             |                            |                                 |                     |             |             |
| Safety devices                  | Item                            | 01                         | PC board fuse                   |                     |             |             |
|                                 |                                 | 02                         | Fan motor overcurrent protector |                     |             |             |
| Control systems                 | Infrared remote control         | BRC4C65                    |                                 |                     |             |             |
|                                 | Wired remote control            | BRC1H52W/S/K               |                                 |                     |             |             |

Standard accessories: Installation and operation manual;Quantity: 1;

Standard accessories: Drain hose;Quantity: 1;

Standard accessories: Metal clamp for drain hose;Quantity: 1;

Standard accessories: Washer for hanger bracket;Quantity: 8;

Standard accessories: Screws;Quantity: 16;

Standard accessories: Insulation for fitting;Quantity: 2;

Standard accessories: Sealing pad;Quantity: 3;

# 2 Specifications

## 2 - 1 Specifications

- Standard accessories: Wire clamp material;Quantity: 1;  
 Standard accessories: Spring washer;Quantity: 2;  
 Standard accessories: Hexagon head screw;Quantity: 2;  
 Standard accessories: Plain washer;Quantity: 8;  
 Standard accessories: Hexagon head screw with washer;Quantity: 49;  
 Standard accessories: Gas connection pipe;Quantity: 1;  
 Standard accessories: General safety precautions;Quantity: 1;

2

| Electrical specifications |                            |    | FXMA50A     | FXMA63A | FXMA80A | FXMA100A | FXMA125A |
|---------------------------|----------------------------|----|-------------|---------|---------|----------|----------|
| Power supply              | Name                       |    | VE          |         |         |          |          |
|                           | Phase                      |    | 1~          |         |         |          |          |
|                           | Frequency                  | Hz | 50/60       |         |         |          |          |
|                           | Voltage                    | V  | 220-240/220 |         |         |          |          |
| Current - 50Hz            | Minimum circuit amps (MCA) | A  | 1.8         | 2.0     | 2.4     | 3.0      | 3.2      |
|                           | Maximum fuse amps (MFA)    | A  | 6           |         |         |          |          |
|                           | Full load amps (FLA) Total | A  | 1.6         | 1.8     | 2.2     | 2.7      | 2.9      |
| Current - 60Hz            | Minimum circuit amps (MCA) | A  | 1.8         | 2.0     | 2.4     | 3.0      | 3.2      |
|                           | Maximum fuse amps (MFA)    | A  | 6           |         |         |          |          |
|                           | Full load amps (FLA) Total | A  | 1.6         | 1.8     | 2.2     | 2.7      | 2.9      |

| Electrical specifications |                            |    | FXMA200A        | FXMA250A |
|---------------------------|----------------------------|----|-----------------|----------|
| Power supply              | Name                       |    | VM              |          |
|                           | Phase                      |    | 1~              |          |
|                           | Frequency                  | Hz | 50/60           |          |
|                           | Voltage                    | V  | 220-240/220-230 |          |
| Current - 50Hz            | Minimum circuit amps (MCA) | A  | 4.3             | 5.2      |
|                           | Maximum fuse amps (MFA)    | A  | 6               |          |
|                           | Full load amps (FLA) Total | A  | 3.9             | 4.7      |
| Current - 60Hz            | Minimum circuit amps (MCA) | A  | 4.3             | 5.2      |
|                           | Maximum fuse amps (MFA)    | A  | 6               |          |
|                           | Full load amps (FLA) Total | A  | 3.9             | 4.7      |

- (1)Values are valid for the factory setting. |  
 (2)Cooling: indoor temp. 27°CDB, 19°CWB; outdoor temp. 35°CDB; equivalent piping length: 5m; level difference: 0m |  
 (3)Heating: indoor temp. 20°CDB; outdoor temp. 7°CDB, 6°CWB; equivalent refrigerant piping: 5m; level difference: 0m |  
 (4)Capacities are net, including a deduction for cooling (an addition for heating) for indoor fan motor heat. |  
 (5)External static pressure is changeable to set by the remote control (from standard to high, see installation manual) |  
 (6)Voltage range: units are suitable for use on electrical systems where voltage supplied to unit terminal is not below or above listed range limits. |  
 (7)Maximum allowable voltage range variation between phases is 2%. |  
 (8)MCA/MFA: MCA = 1.1 x FLA |  
 (9)Instead of a fuse, use a circuit breaker |  
 (10)Select wire size based on the value of MCA |  
 (11)Contains fluorinated greenhouse gases



### 3 Safety device settings

#### 3 - 1 Safety Device Settings

**FXMA50-125A**

| Safety devices               | FXMA50      | FXMA63 | FXMA80 | FXMA100 | FXMA125 |
|------------------------------|-------------|--------|--------|---------|---------|
| Printed circuit board (main) | 250V, 3.15A |        |        |         |         |
| Printed circuit board (fan)  | 250V, 6.3A  |        |        |         |         |

**4D139805**
**FXMA200-250A**

| Safety devices        | FXMA200AXVMB | FXMA250AXVMB |
|-----------------------|--------------|--------------|
| PCB fuse              | 250V, 3.15A  | 250V, 3.15A  |
| PCB fuse (fan driver) | 250V, 20A    | 250V, 20A    |

**4D140530**

# 4 Options

## 4 - 1 Options

### FXMA50-125A

| Option kit   | Product name | Availability                              |                              |
|--|--------------|---|------------------------------|
|  |              | FXMA50A5VEB<br>FXMA63A5VEB<br>FXMA80A5VEB | FXMA100A5VEB<br>FXMA125A5VEB |
| Air discharge adaptor for round ducts                | KDAJ25K71    | ✓   |                              |
|  | KDAJ25K140   |   | ✓                            |
| Wireless remote control                              | BRC4C65 ②    | ✓   | ✓                            |
|  | BRC4C66 ②    | ✓   | ✓                            |
| WLAN adaptor for smartphones                         | BRP069C51    | ✓   | ✓                            |
|  | BRC1H52W ①   | ✓   | ✓                            |
| Wired remote control                                 | BRC1H52S ①   | ✓   | ✓                            |
|  | BRC1H52K ①   | ✓   | ✓                            |
|  | DCC601A51    | ✓   | ✓                            |
| Intelligent Tablet Controller                        | DCS601C51    | ✓   | ✓                            |
| Intelligent touch controller                         | DCS302C51 ②  | ✓   | ✓                            |
| Central remote control                               | DCS302CA61 ② | ✓   | ✓                            |
|  | DCS301B51 ②  | ✓   | ✓                            |
| Unified ON/OFF controller                            | DCS301BA61 ② | ✓   | ✓                            |
|  | RTD-NET      | ✓   | ✓                            |
| Modbus interface for monitoring and control          | RTD-10       | ✓   | ✓                            |
| Modbus interface for infrastructure cooling          | RTD-20       | ✓   | ✓                            |
| Modbus interface for retail                          | RTD-HO       | ✓   | ✓                            |
| Modbus interface for hotel                           | KLIC-DI      | ✓   | ✓                            |
| KNX interface  | DCM601A51    | ✓   | ✓                            |
| Intelligent Touch Manager                            | EKMBOX       | ✓   | ✓                            |
| Modbus interface                                     | DCM010A51    | ✓   | ✓                            |
| Daikin PMS interface                                 | DMS502A51    | ✓   | ✓                            |
| BACnet interface                                     | DMS504B51    | ✓   | ✓                            |
| LonWorks interface                                   | KRCS01-8B    | ✓   | ✓                            |
| External wired temperature sensor                    | K.RSS ④⑤     | ✓   | ✓                            |
| External wireless temperature sensor                 | EKEWTSC-1 ⑥  | ✓   | ✓                            |
| Adapter with -4- output signals                      | EKR1C14 ③    | ✓   | ✓                            |
| Wiring adaptor for electrical appendices             | KRP4A52      | ✓   | ✓                            |
|  | KRP2A51      | ✓   | ✓                            |
| Adapter for keycard and/or window contact connection | BRP7A51 ②③   | ✓   | ✓                            |
| External control adaptor for outdoor unit            | DTA104A61 ③  | ✓   | ✓                            |
| Installation box for adaptor PCB                     | KRP1BC101    | ✓   | ✓                            |
| Optional output PCB                                  | ERP01A50 ③   | ✓   | ✓                            |

- ① Mandatory option  
 ② Only possible in combination with remote control -BRC1H52W/S/K-.  
 ③ Requires installation box for adaptor PCB -KRP1BC101-.  
 ④ ·K.RSS- is not an official option. Sales for this option are an SBU responsibility.  
 ⑤ This option needs to be ordered together with -EKEWTSC-1-.  
 ⑥ ·EKEWTSC-1- is a wire harness for the connection of option -K.RSS-.

**4D138467B**

### FXMA200-250A

| Option kit  | Product name | Availability                 |
|---|--------------|------------------------------|
|   |              | FXMA200AXVMB<br>FXMA250AXVMB |
| Wireless remote control   | BRC4C65 ②    | ✓                            |
|   | BRC1H52W ①   | ✓                            |
| Wired remote control  | BRC1H52S ①   | ✓                            |
|   | BRC1H52K ①   | ✓                            |
|   | DCC601A51    | ✓                            |
| Intelligent Tablet Controller                                   | DCS601C51    | ✓                            |
| Intelligent touch controller                                    | DCS302C51    | ✓                            |
| Central remote control  | DCS302CA61   | ✓                            |
|   | DCS301B51 ②  | ✓                            |
| Unified ON/OFF controller                                       | DCS301BA61 ② | ✓                            |
|   | DCM601A51    | ✓                            |
| Intelligent Touch Manager                                       | ERP01A50     | ✓                            |
| Optional output PCB   | EKR1C14      | ✓                            |
| Adapter with -4- output signals                                 | BRP7A51 ②    | ✓                            |
| Adapter for keycard and/or window contact connection            | KJB212AA     | ✓                            |
| Electrical box with earth terminal (-2- blocks)                 | KJB311AA     | ✓                            |
| Electrical box with earth terminal (-3- blocks)                 | EKEWTSC-1 ③  | ✓                            |
| Wire harness for external wireless temperature sensor           | KRP1C65      | ✓                            |
| Adaptor for wiring  | KRP2A51      | ✓                            |
| Wiring adaptor for electrical appendices                        | KRP4A51      | ✓                            |
|   | KRCS01-8B    | ✓                            |
| External wired temperature sensor                               | DTA104A61    | ✓                            |
| External adaptor for outdoor unit (installation on indoor unit) | BRP069C51 ②  | ✓                            |
| WLAN adaptor for smartphones                                    | BDU510B250VM | ✓                            |
| Drain pump kit  | BAFM503A250  | ✓                            |
| High-efficiency filter -65-%                                    | BAFH504A250  | ✓                            |
| High-efficiency filter -90-%                                    | BDD500B250   | ✓                            |
| Filter chamber  | BAFL502A250  | ✓                            |
| Long-life replacement filter                                    | BAFL501A250  | ✓                            |
| Pre-filter  | DTA114A61    | ✓                            |
| Adaptor for multi-tenant applications                           |              |                              |

- ① Mandatory option  
 ② Only possible in combination with remote control -BRC1H52W/S/K-.  
 ③ ·EKEWTSC-1- is a wire harness for the connection of option -K.RSS-.  
 ·K.RSS- is not an official option. Sales for this option are an SBU responsibility.

**4D140537A**

# 5 Capacity tables

## 5 - 1 Cooling/Heating Capacity Tables

### FXMA50-125A

**Cooling**

| Unit size | Fan speed | Indoor air temperature       |     |              |     |              |     |              |      |              |      |              |      |              |      |
|-----------|-----------|------------------------------|-----|--------------|-----|--------------|-----|--------------|------|--------------|------|--------------|------|--------------|------|
|           |           | 14,0 [°C WB]                 |     | 16,0 [°C WB] |     | 18,0 [°C WB] |     | 19,0 [°C WB] |      | 20,0 [°C WB] |      | 22,0 [°C WB] |      | 24,0 [°C WB] |      |
|           |           | TC                           | SHC | TC           | SHC | TC           | SHC | TC           | SHC  | TC           | SHC  | TC           | SHC  | TC           | SHC  |
| 50        | H         | 3,1                          | 2,7 | 4,0          | 3,2 | 5,1          | 3,8 | 5,6          | 4,0  | 6,2          | 4,2  | 7,4          | 4,5  | 8,6          | 4,8  |
|           | M         | Correction factor -0.84 × H- |     |              |     |              |     |              |      |              |      |              |      |              |      |
|           | L         | Correction factor -0.71 × H- |     |              |     |              |     |              |      |              |      |              |      |              |      |
| 63        | H         | 3,9                          | 3,4 | 5,1          | 4,1 | 6,4          | 4,9 | 7,1          | 5,1  | 7,8          | 5,3  | 9,3          | 5,7  | 10,9         | 6,1  |
|           | M         | Correction factor -0.82 × H- |     |              |     |              |     |              |      |              |      |              |      |              |      |
|           | L         | Correction factor -0.66 × H- |     |              |     |              |     |              |      |              |      |              |      |              |      |
| 80        | H         | 4,9                          | 4,4 | 6,5          | 5,4 | 8,2          | 6,4 | 9,0          | 6,7  | 9,9          | 7,0  | 11,6         | 7,5  | 13,6         | 7,9  |
|           | M         | Correction factor -0.83 × H- |     |              |     |              |     |              |      |              |      |              |      |              |      |
|           | L         | Correction factor -0.60 × H- |     |              |     |              |     |              |      |              |      |              |      |              |      |
| 100       | H         | 6,1                          | 5,3 | 8,1          | 6,5 | 10,1         | 7,7 | 11,2         | 8,1  | 12,3         | 8,4  | 14,7         | 9,1  | 17,2         | 9,6  |
|           | M         | Correction factor -0.78 × H- |     |              |     |              |     |              |      |              |      |              |      |              |      |
|           | L         | Correction factor -0.52 × H- |     |              |     |              |     |              |      |              |      |              |      |              |      |
| 125       | H         | 7,6                          | 6,8 | 10,1         | 8,3 | 12,7         | 9,8 | 14,0         | 10,3 | 15,4         | 10,7 | 18,3         | 11,6 | 21,3         | 12,2 |
|           | M         | Correction factor -0.81 × H- |     |              |     |              |     |              |      |              |      |              |      |              |      |
|           | L         | Correction factor -0.64 × H- |     |              |     |              |     |              |      |              |      |              |      |              |      |

Notes

- 1) TC: Total capacity [kW]
- SHC: Sensible heat capacity [kW]
- H: High
- M: Medium
- L: Low
- 2) Outdoor temperature -35°C DB

**Heating**

| Unit size | Fan speed | Indoor air temperature       |              |              |              |              |              |
|-----------|-----------|------------------------------|--------------|--------------|--------------|--------------|--------------|
|           |           | 16,0 [°C DB]                 | 18,0 [°C DB] | 20,0 [°C DB] | 21,0 [°C DB] | 22,0 [°C DB] | 24,0 [°C DB] |
|           |           | TC                           | TC           | TC           | TC           | TC           | TC           |
| 50        | H         | 7,4                          | 6,8          | 6,3          | 6,0          | 5,8          | 5,2          |
|           | M         | Correction factor -0.81 × H- |              |              |              |              |              |
|           | L         | Correction factor -0.65 × H- |              |              |              |              |              |
| 63        | H         | 9,4                          | 8,7          | 8,0          | 7,7          | 7,3          | 6,7          |
|           | M         | Correction factor -0.79 × H- |              |              |              |              |              |
|           | L         | Correction factor -0.63 × H- |              |              |              |              |              |
| 80        | H         | 11,7                         | 10,8         | 10,0         | 9,6          | 9,2          | 8,3          |
|           | M         | Correction factor -0.83 × H- |              |              |              |              |              |
|           | L         | Correction factor -0.59 × H- |              |              |              |              |              |
| 100       | H         | 14,6                         | 13,6         | 12,5         | 12,0         | 11,4         | 10,4         |
|           | M         | Correction factor -0.74 × H- |              |              |              |              |              |
|           | L         | Correction factor -0.48 × H- |              |              |              |              |              |
| 125       | H         | 18,4                         | 17,2         | 16,0         | 15,4         | 14,8         | 13,6         |
|           | M         | Correction factor -0.80 × H- |              |              |              |              |              |
|           | L         | Correction factor -0.61 × H- |              |              |              |              |              |

Notes

- 1) TC: Total capacity [kW]
- H: High
- M: Medium
- L: Low
- 2) Outdoor temperature -7°C DB / -6°C WB

4D139666

### FXMA200-250A

**Cooling**

| Unit size | Fan speed | Indoor air temperature       |      |              |      |              |      |              |      |              |      |              |      |              |      |
|-----------|-----------|------------------------------|------|--------------|------|--------------|------|--------------|------|--------------|------|--------------|------|--------------|------|
|           |           | 14,0 [°C WB]                 |      | 16,0 [°C WB] |      | 18,0 [°C WB] |      | 19,0 [°C WB] |      | 20,0 [°C WB] |      | 22,0 [°C WB] |      | 24,0 [°C WB] |      |
|           |           | TC                           | SHC  | TC           | SHC  | TC           | SHC  | TC           | SHC  | TC           | SHC  | TC           | SHC  | TC           | SHC  |
| 200       | H         | 12,2                         | 10,9 | 16,1         | 13,3 | 20,3         | 15,7 | 22,4         | 16,4 | 24,5         | 17,2 | 29,0         | 18,5 | 33,8         | 19,7 |
|           | M         | Correction factor -0.85 × H- |      |              |      |              |      |              |      |              |      |              |      |              |      |
|           | L         | Correction factor -0.76 × H- |      |              |      |              |      |              |      |              |      |              |      |              |      |
| 250       | H         | 15,9                         | 13,9 | 20,7         | 16,8 | 25,6         | 19,6 | 28,0         | 20,4 | 30,6         | 21,2 | 36,0         | 22,5 | 41,7         | 23,6 |
|           | M         | Correction factor -0.86 × H- |      |              |      |              |      |              |      |              |      |              |      |              |      |
|           | L         | Correction factor -0.75 × H- |      |              |      |              |      |              |      |              |      |              |      |              |      |

Notes

- 1) TC: Total capacity [kW]
- SHC: Sensible heat capacity [kW]
- H: High
- M: Medium
- L: Low
- 2) Outdoor temperature -35°C DB

**Heating**

| Unit size | Fan speed | Indoor air temperature       |              |              |              |              |              |
|-----------|-----------|------------------------------|--------------|--------------|--------------|--------------|--------------|
|           |           | 16,0 [°C DB]                 | 18,0 [°C DB] | 20,0 [°C DB] | 21,0 [°C DB] | 22,0 [°C DB] | 24,0 [°C DB] |
|           |           | TC                           | TC           | TC           | TC           | TC           | TC           |
| 200       | H         | 28,9                         | 26,9         | 25,0         | 24,0         | 23,1         | 21,2         |
|           | M         | Correction factor -0.82 × H- |              |              |              |              |              |
|           | L         | Correction factor -0.72 × H- |              |              |              |              |              |
| 250       | H         | 36,4                         | 33,9         | 31,5         | 30,3         | 29,1         | 26,7         |
|           | M         | Correction factor -0.86 × H- |              |              |              |              |              |
|           | L         | Correction factor -0.70 × H- |              |              |              |              |              |

Notes

- 1) TC: Total capacity [kW]
- H: High
- M: Medium
- L: Low
- 2) Outdoor temperature -7°C DB / -6°C WB

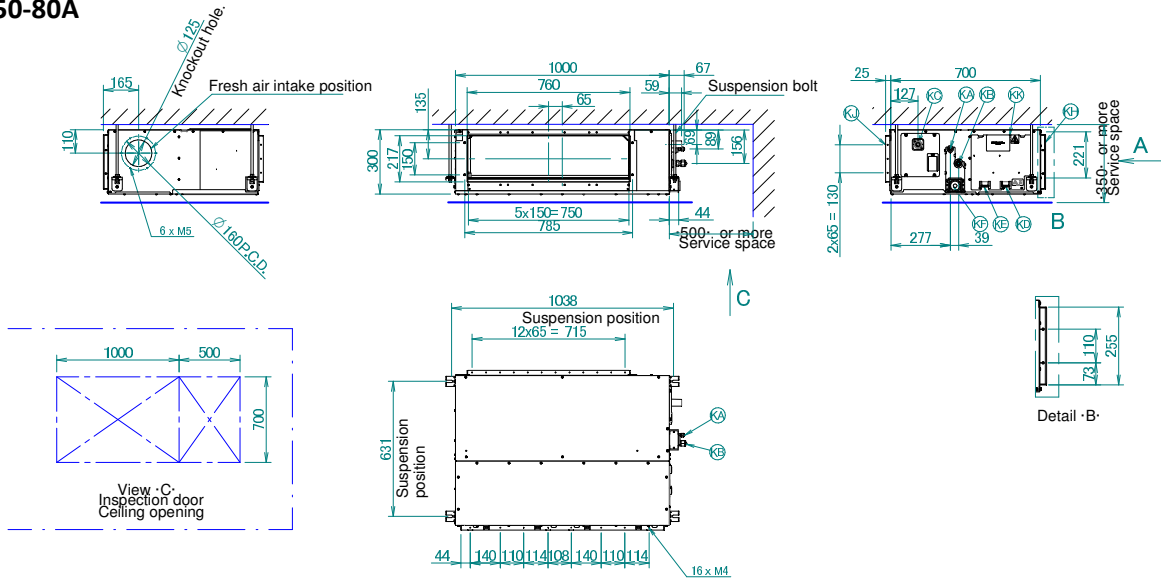
4D140674

# 6 Dimensional drawings

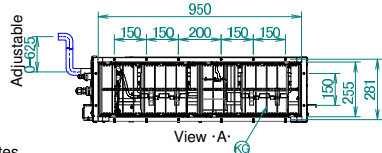
## 6 - 1 Dimensional Drawings

6

### FXMA50-80A



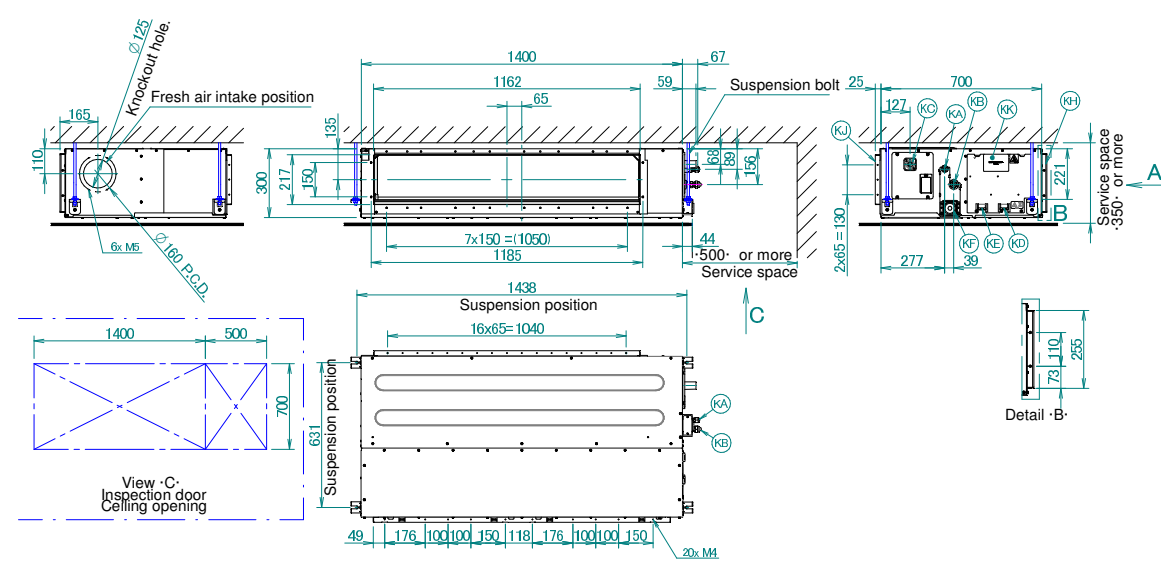
| Item | Name                        | Description                                       |
|------|-----------------------------|---|
| KA   | Liquid pipe connection port | $\varnothing 6.35$ flared connection              |
| KB   | Gas pipe connection port    | $\varnothing 12.70$ flared connection             |
| KC   | Drain pipe connection       | VP25 (OD $\varnothing 32$ , ID $\varnothing 25$ ) |
| KD   | Wiring connection           |   |
| KE   | Power supply connection     |   |
| KF   | Drain outlet                | VP25 (OD $\varnothing 32$ , ID $\varnothing 25$ ) |
| KG   | Air filter                  |   |
| KH   | Air suction side            |   |
| KJ   | Air discharge side          |   |
| KK   | Nameplate                   |   |



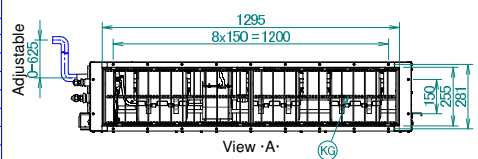
- Notes
1. When installing optional accessories, refer to their respective documentation.
  2. The ceiling depth varies according to the documentation of the specific system.
  3. In case of bottom suction, mount the chamber cover to the backside of the unit.
  4. In case of rear suction, mount the chamber cover to the bottom side of the unit.
- For more information, refer to the installation manual.

3D139544

### FXMA100-125A



| Item | Name                        | Description                                       |
|------|-----------------------------|---|
| KA   | Liquid pipe connection port | $\varnothing 9.52$ flared connection              |
| KB   | Gas pipe connection port    | $\varnothing 15.90$ flared connection             |
| KC   | Drain pipe connection       | VP25 (OD $\varnothing 32$ , ID $\varnothing 25$ ) |
| KD   | Wiring connection           |   |
| KE   | Power supply connection     |   |
| KF   | Drain outlet                | VP25 (OD $\varnothing 32$ , ID $\varnothing 25$ ) |
| KG   | Air filter                  |   |
| KH   | Air suction side            |   |
| KJ   | Air discharge side          |   |
| KK   | Nameplate                   |   |



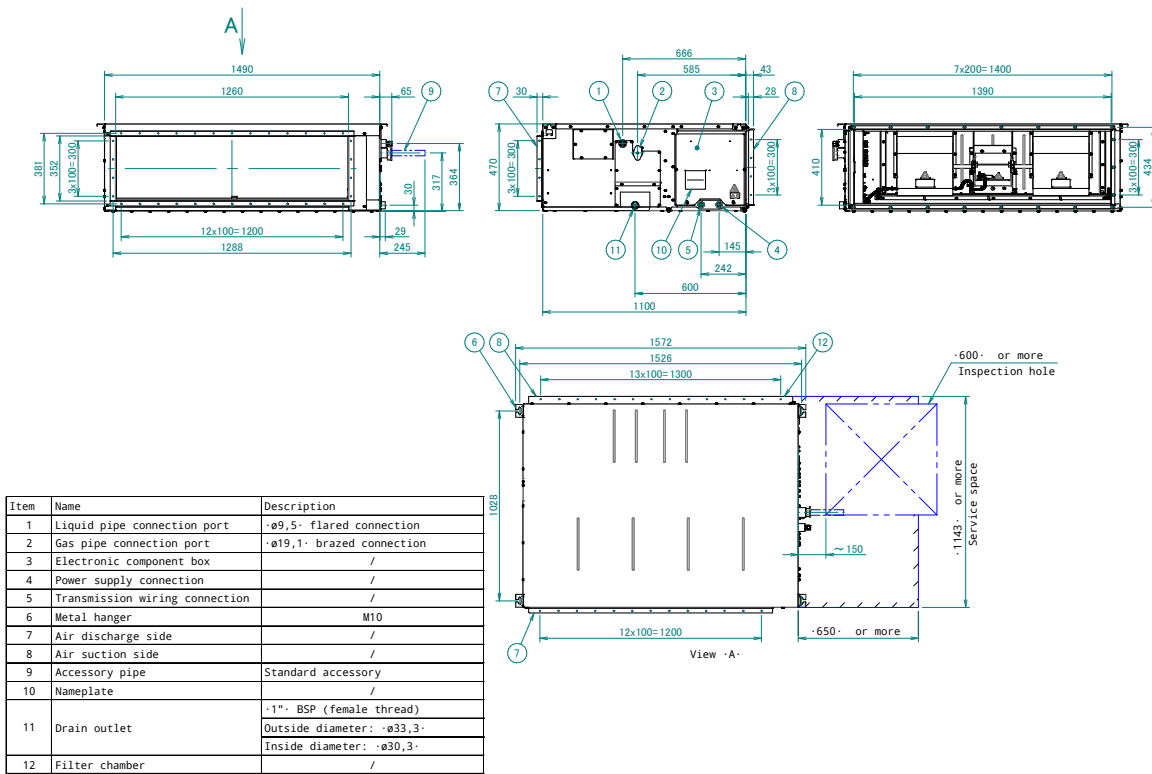
- Notes
1. When installing optional accessories, refer to their respective documentation.
  2. The ceiling depth varies according to the documentation of the specific system.
  3. In case of bottom suction, mount the chamber cover to the backside of the unit.
  4. In case of rear suction, mount the chamber cover to the bottom side of the unit.
- For more information, refer to the installation manual.

3D139547

# 6 Dimensional drawings

## 6 - 1 Dimensional Drawings

### FXMA200-250A



Notes  
 1. When installing optional accessories, refer to their respective documentation.  
 2. The unit nameplate is located on the control box cover.

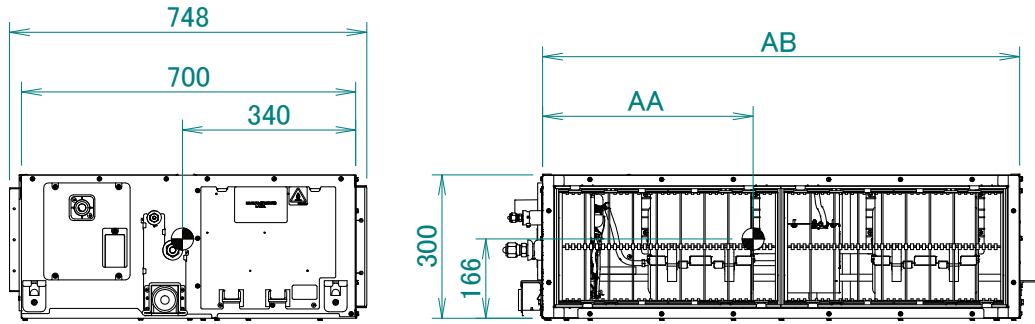
3D140557

# 7 Centre of gravity

## 7 - 1 Centre of Gravity

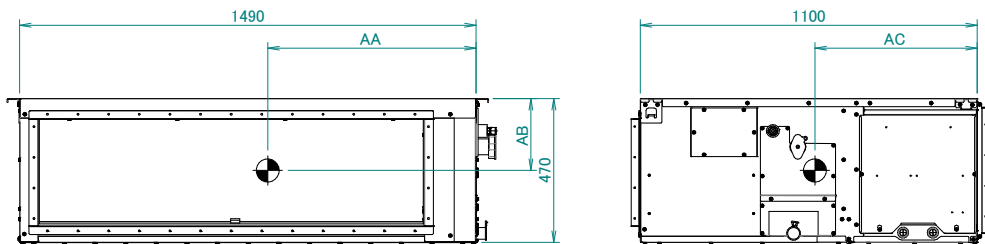
7

### FXMA50-125A



4D137920

### FXMA200-250A



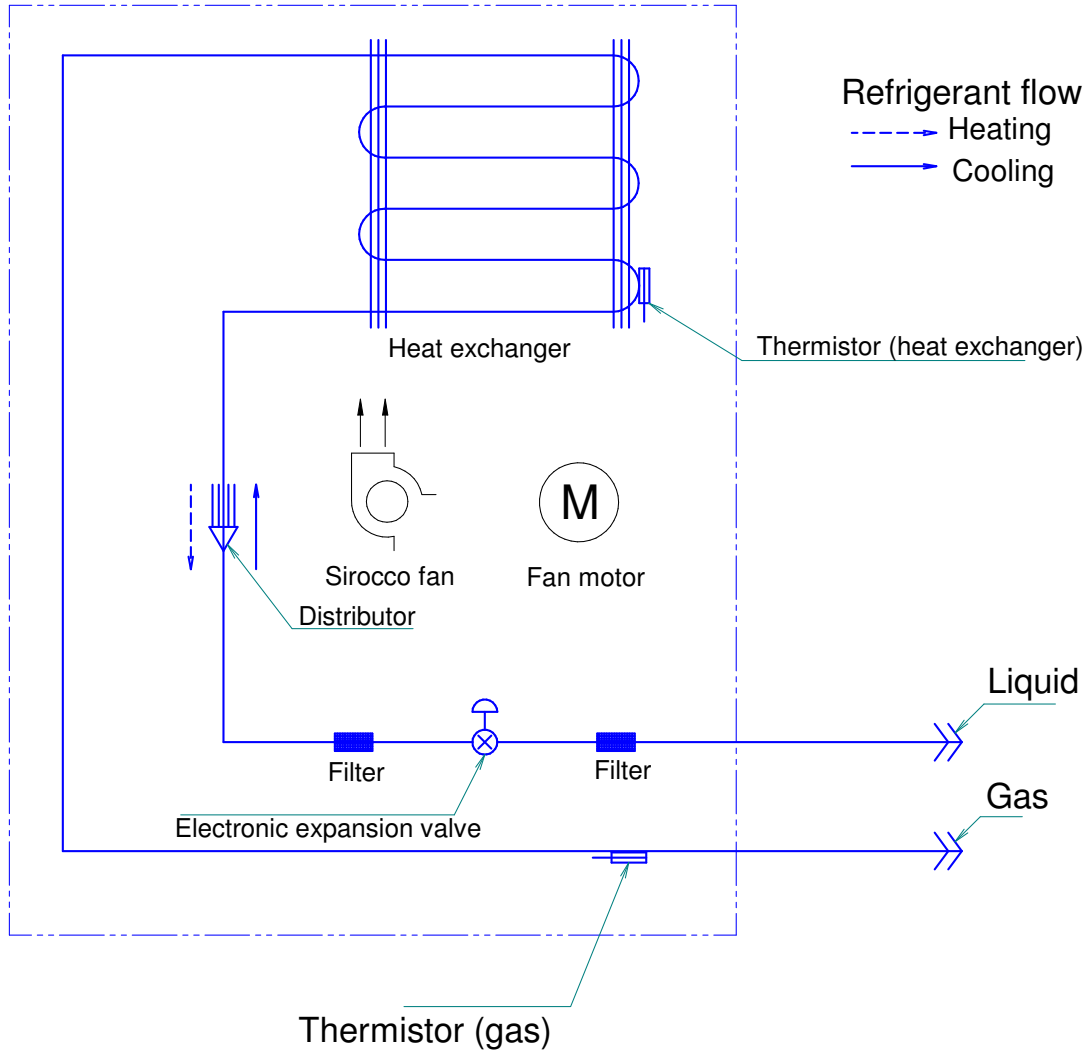
| Model name   | AA  | AB  | AC  |
|--------------|-----|-----|-----|
| FXMA200AXVMB | 680 | 235 | 500 |
| FXMA250AXVMB | 700 | 255 | 510 |

3D140474

# 8 Piping diagrams

## 8 - 1 Piping Diagrams

### FXMA50-125A



| Model             | Gas    | Liquid |
|-------------------|--------|--------|
| FXMA50/63/80A5VEB | Ø12.70 | Ø6.35  |
| FXMA100/125A5VEB  | Ø15.90 | Ø9.52  |

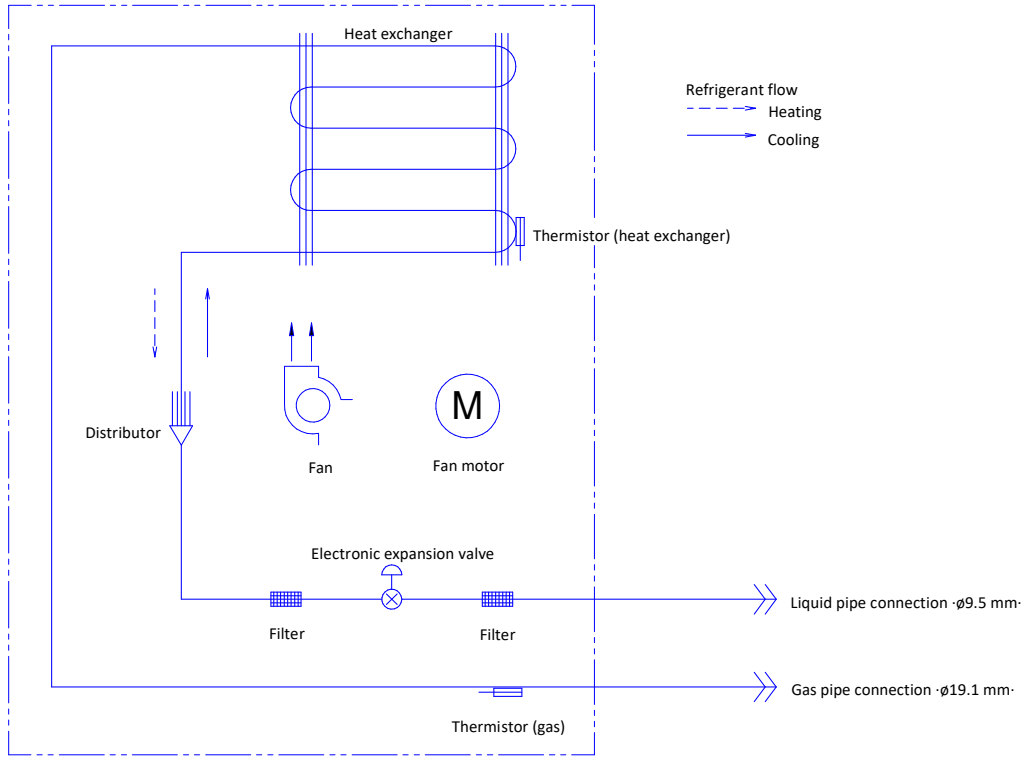
**4D139220**

# 8 Piping diagrams

## 8 - 1 Piping Diagrams

8

FXMA200-250A

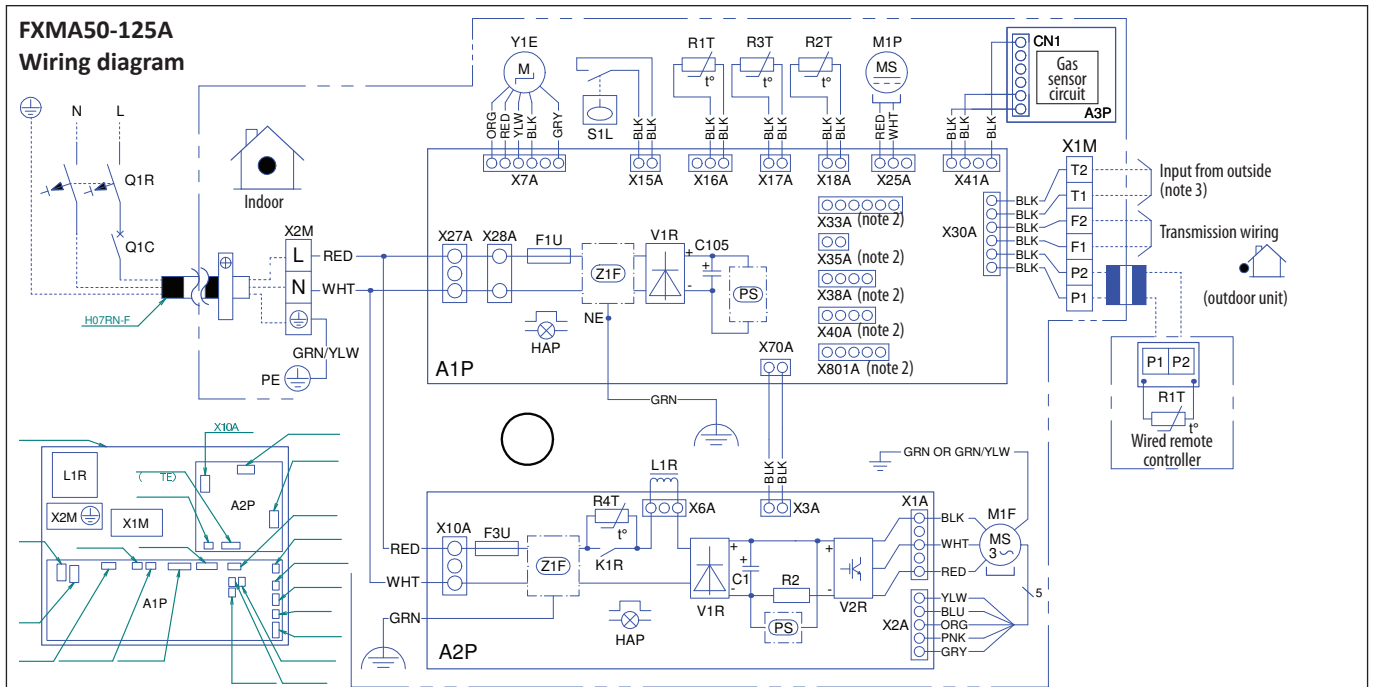


3D140531



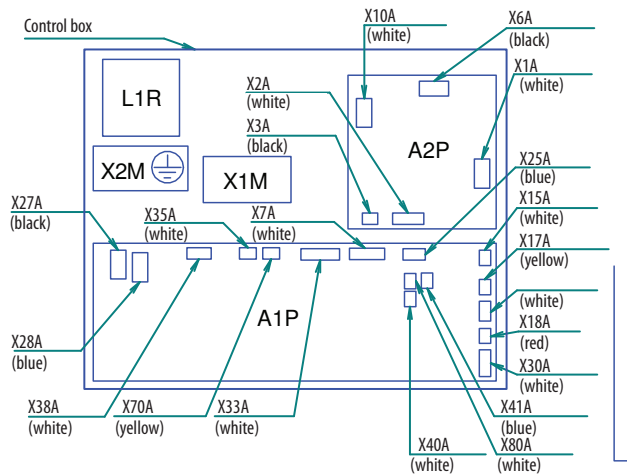
# 9 Wiring diagrams

## 9 - 1 Wiring Diagrams - Single Phase



| Indoor unit |                                    |
|-------------|------------------------------------|
| A1P         | Printed circuit board (main)       |
| A2P         | Printed circuit board (fan)        |
| C1          | Capacitor                          |
| C105        | Capacitor                          |
| CN1         | Gas sensor connector               |
| A3P         | Printed circuit board (gas sensor) |
| F1U         | Fuse (T, 3.15A, 250V)              |
| F3U         | Fuse (T, 6.3A, 250V)               |
| HAP         | Indication lamp                    |
| K1R         | Magnetic relay                     |
| L1R         | Reactor                            |
| M1F         | Motor (indoor fan)                 |
| M1P         | Motor (drain pump)                 |
| NE          | Noiseless earth                    |
| Q1R         | Residual current device            |
| Q1C         | Circuit breaker                    |
| R2          | Resistor (current sensor)          |
| R1T         | Thermistor (air)                   |
| R2T         | Thermistor (liquid)                |
| R3T         | Thermistor (coil)                  |
| R4T         | Thermistor ntc (current limiting)  |
| S1L         | Float switch                       |
| V1R         | Diode bridge                       |
| V2R         | Power module                       |
| PS          | Switching power supply             |
| X1M         | Terminal strip (control)           |
| X2M         | Terminal strip (power supply)      |
| X1A - X801A | Connector                          |
| Y1E         | Electronic expansion valve         |
| Z1F         | Noise filter                       |
|             | Wired remote controller            |
| R1T         | Thermistor (air)                   |

Control box layout



**NOTES**

- : terminal block, ⊞ : connector, - - - : field wiring
- X33A, X35A, X38A, X40A, X801A are connected when optional accessories are being used, see wiring diagram of this accessory.
- Can be used for fire alarm input only. See installation manual for more information.

**WIRE COLORS**

- BLK : Black
- BLU : Blue
- YLW : Yellow
- BRN : Brown
- ORG : Orange
- RED : Red
- WHT : White
- GRN : Green
- PNK : Pink
- GRY : Grey

3D137857

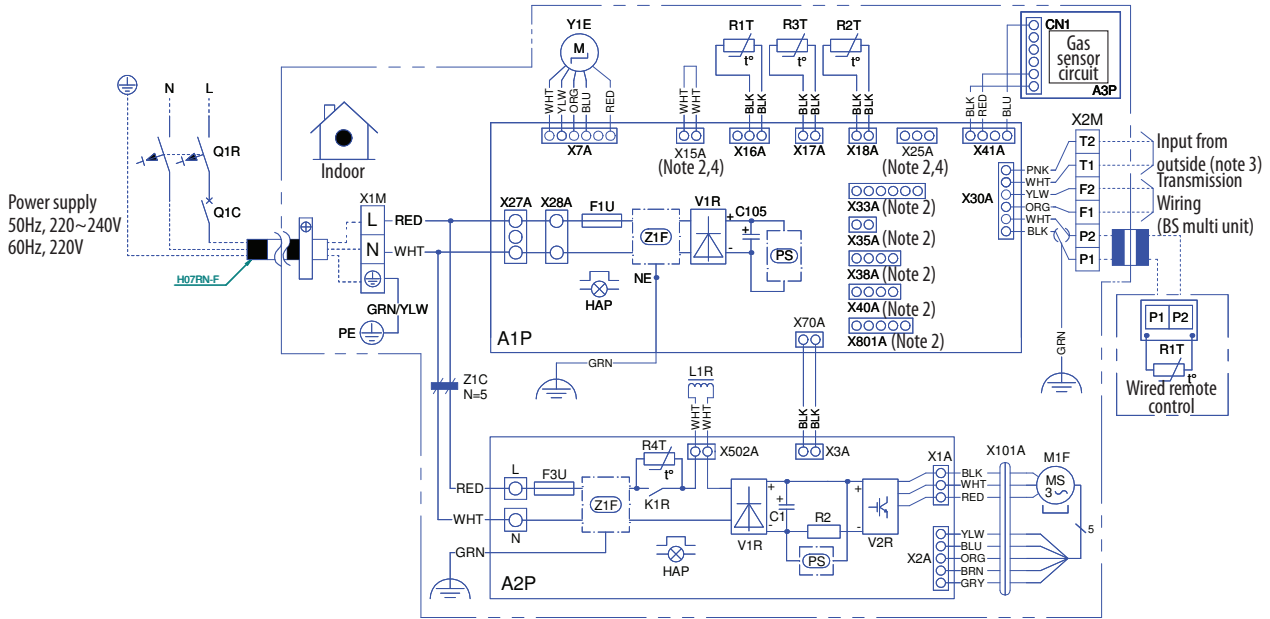
# 9 Wiring diagrams

## 9 - 1 Wiring Diagrams - Single Phase

9

FXMA200-250A

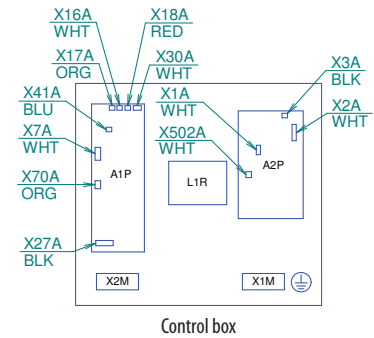
Wiring diagram



| Indoor unit             |                                    |
|-------------------------|------------------------------------|
| A1P                     | Printed circuit board (main)       |
| A2P                     | Printed circuit board (fan)        |
| C1                      | Capacitor                          |
| C105                    | Capacitor                          |
| CN1                     | Gas sensor connector               |
| A3P                     | Printed circuit board (gas sensor) |
| F1U                     | Fuse (T, 3.15A, 250V)              |
| F3U                     | Fuse (T, 6.3A, 250V)               |
| HAP                     | Indication lamp                    |
| K1R                     | Magnetic relay                     |
| L1R                     | Reactor                            |
| M1F                     | Motor (indoor fan)                 |
| NE                      | Noiseless earth                    |
| Q1R                     | Residual current device            |
| Q1C                     | Circuit breaker                    |
| R2                      | Resistor (current sensor)          |
| R1T                     | Thermistor (air)                   |
| R2T                     | Thermistor (liquid)                |
| R3T                     | Thermistor (coil)                  |
| R4T                     | Thermistor ntc (current limiting)  |
| V1R                     | Diode bridge                       |
| V2R                     | Power module                       |
| PS                      | Switching power supply             |
| X1M                     | Terminal strip (power supply)      |
| X2M                     | Terminal strip (control)           |
| X1A - X801A             | Connector                          |
| Y1E                     | Electronic expansion valve         |
| Z1F                     | Noise filter                       |
| Z1C                     | Noise filter (ferrite core)        |
| Wired remote controller |                                    |
| R1T                     | Thermistor (air)                   |

- NOTES**
- : Terminal block  
 : Field wiring  
 : Connector  
 : Short circuit connector
  - X33A, X35A, X38A, X40A, X801A, X15A, X25A are connected when optional accessories are being used, see wiring diagram of this accessory.
  - Can be used for fire alarm input only. See installation manual for more information.
  - X15A, X25A Are connected when the drain pump kit is being used. Before installing of drain pump kit remove short circuit connector connected to X15A.

- WIRE COLORS**
- BLK : Black
  - BLU : Blue
  - YLW : Yellow
  - BRN : Brown
  - ORG : Orange
  - RED : Red
  - WHT : White
  - GRN : Green
  - PNK : Pink
  - GRY : Grey



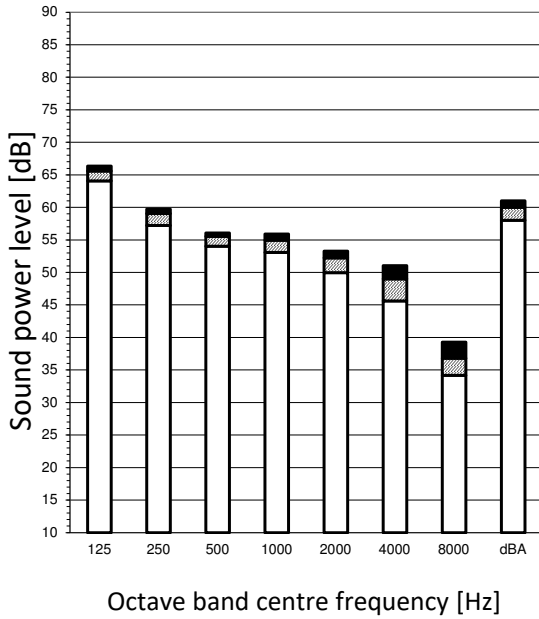
3D139909C

# 10 Sound data

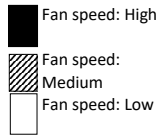
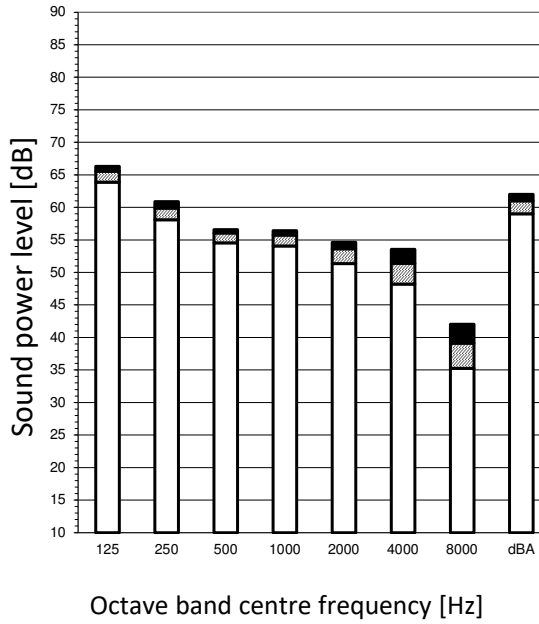
## 10 - 1 Sound Power Spectrum

### FXMA50A

Cooling



Heating



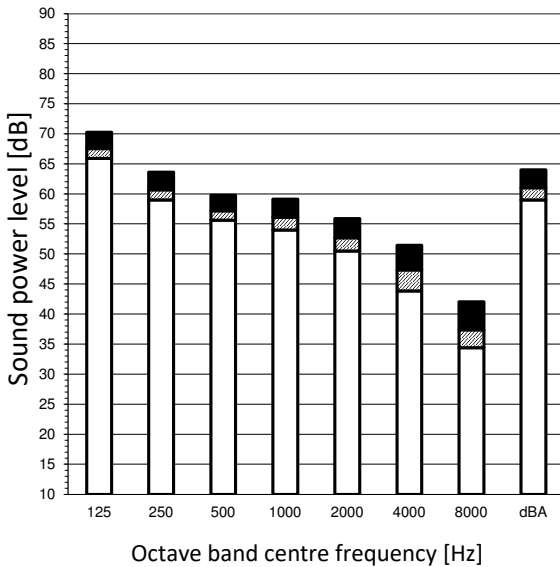
Notes

1. dBA = A-weighted sound power level (A scale according to IEC).
2. Reference acoustic power 0 dB =  $\cdot 10E-6 \mu W$
3. Measured according to ISO 3744

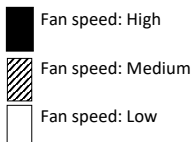
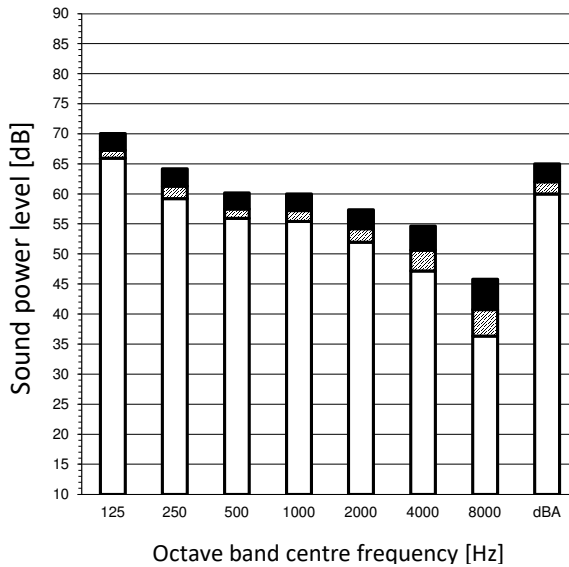
4D139780

### FXMA63A

Cooling



Heating



Notes

1. dBA = A-weighted sound power level (A scale according to IEC).
2. Reference acoustic power 0 dB =  $\cdot 10E-6 \mu W$
3. Measured according to ISO 3744

4D139782

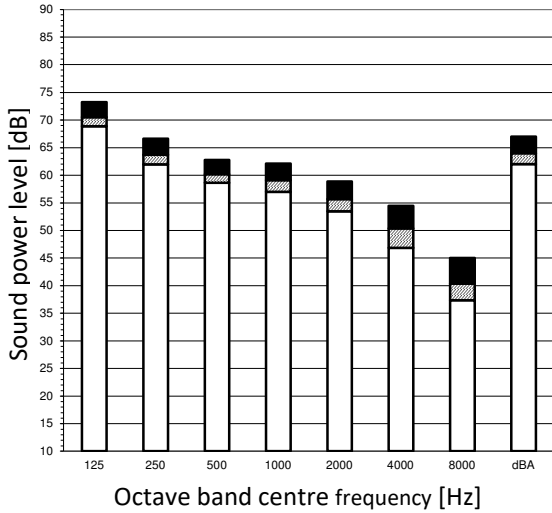
# 10 Sound data

## 10 - 1 Sound Power Spectrum

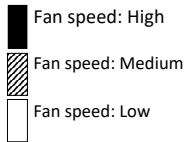
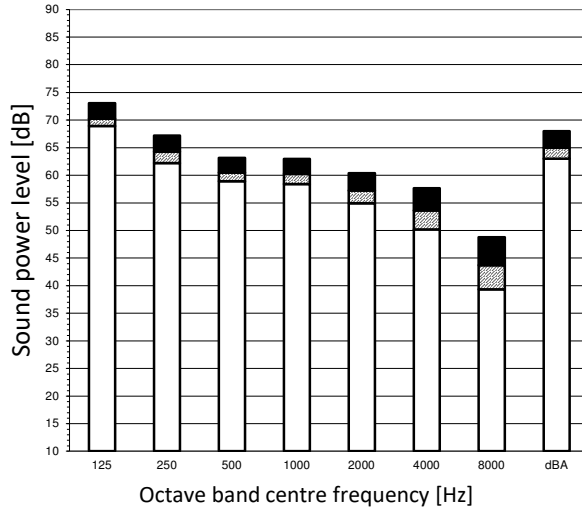
10

### FXMA80A

Cooling



Heating

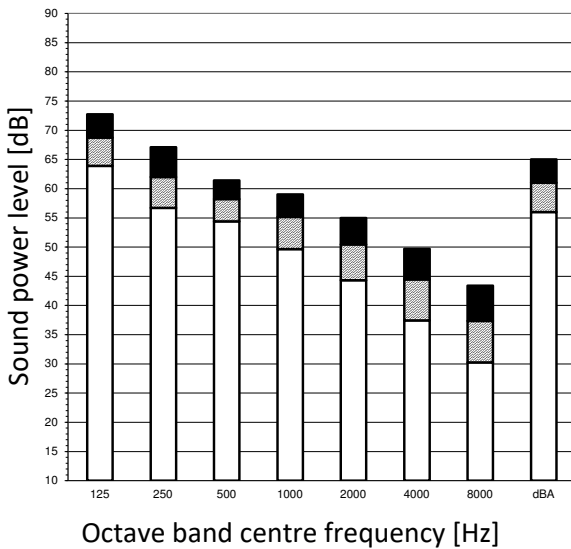


Notes  
 1. dBA = A-weighted sound power level (A scale according to IEC).  
 2. Reference acoustic power 0 dB =  $\cdot 10E-6 \mu W$   
 3. Measured according to ISO 3744

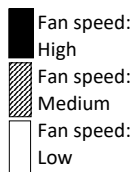
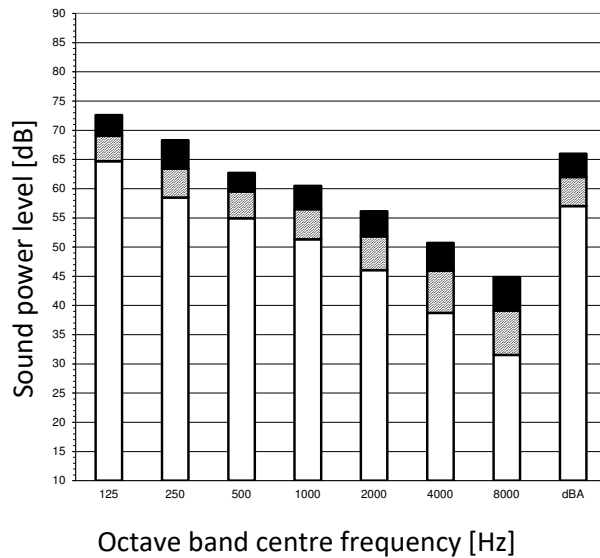
4D139783

### FXMA100A

Cooling



Heating



Notes  
 1. dBA = A-weighted sound power level (A scale according to IEC).  
 2. Reference acoustic power 0 dB =  $\cdot 10E-6 \mu W$   
 3. Measured according to ISO 3744

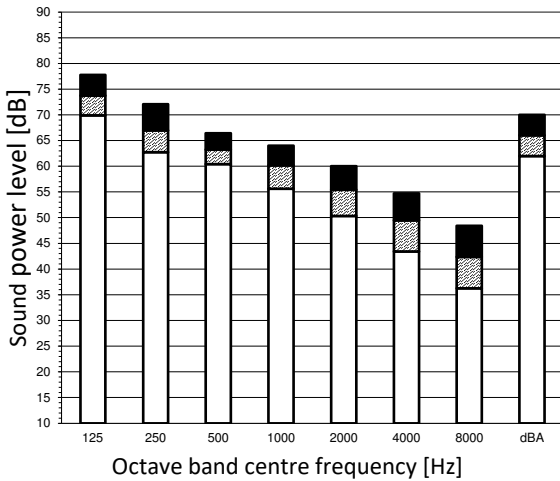
4D139779

# 10 Sound data

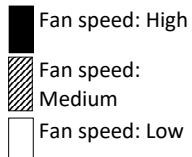
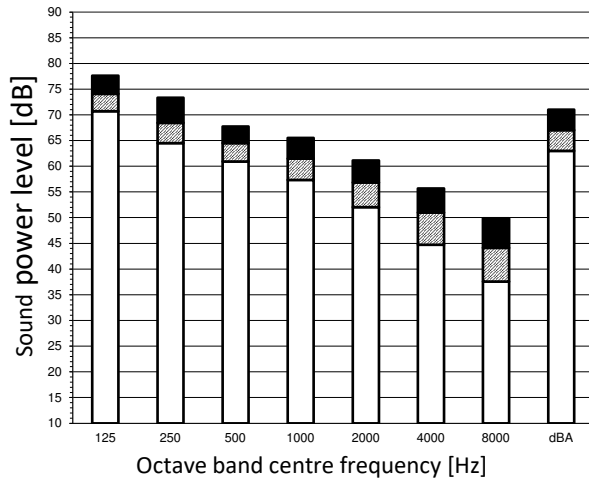
## 10 - 1 Sound Power Spectrum

### FXMA125A

Cooling



Heating

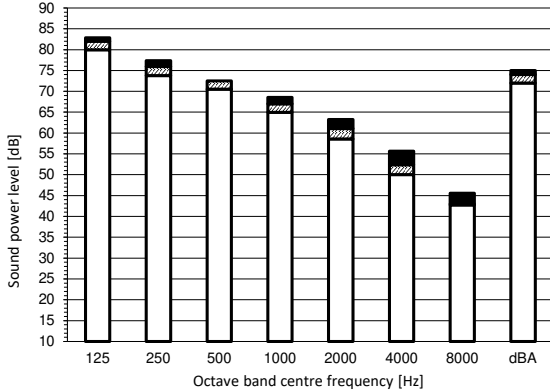


- Notes
1. dBA = A-weighted sound power level (A scale according to IEC).
  2. Reference acoustic power 0 dB =  $-10E-6 \mu W$
  3. Measured according to ISO 3744

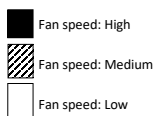
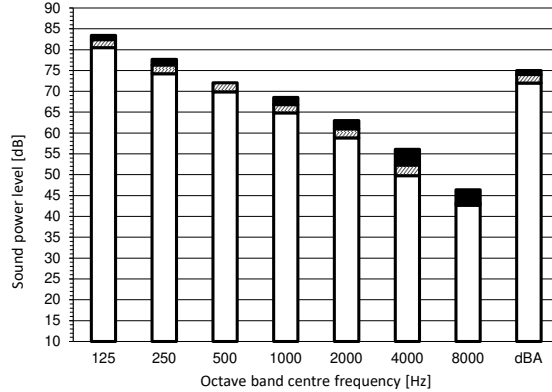
4D139776

### FXMA200A

Cooling



Heating



- Notes
1. dBA = A-weighted sound power level (A scale according to IEC).
  2. Reference acoustic power 0 dB =  $-10E-6 \mu W$
  3. Measured according to ISO 3744

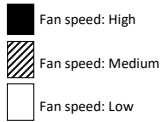
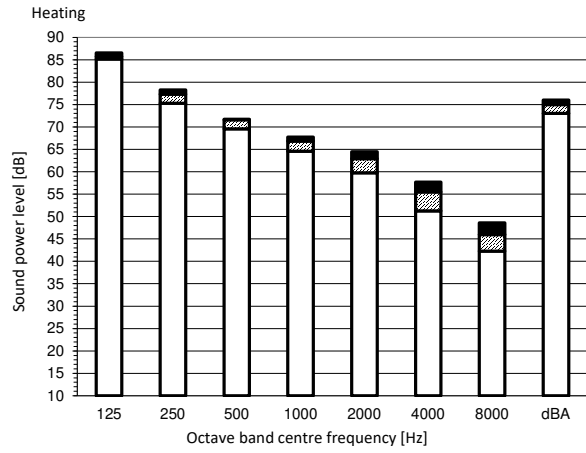
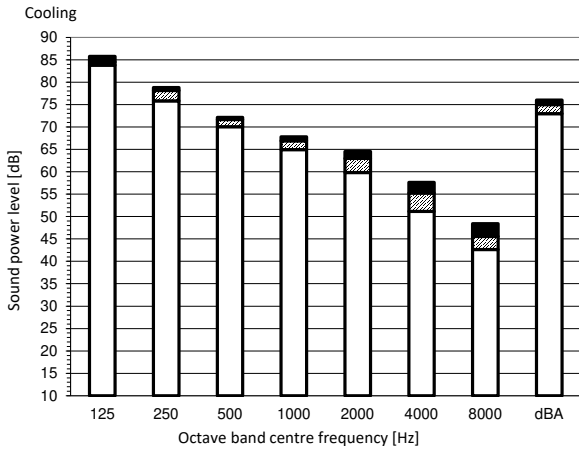
4D140664

# 10 Sound data

## 10 - 1 Sound Power Spectrum

10

### FXMA250A



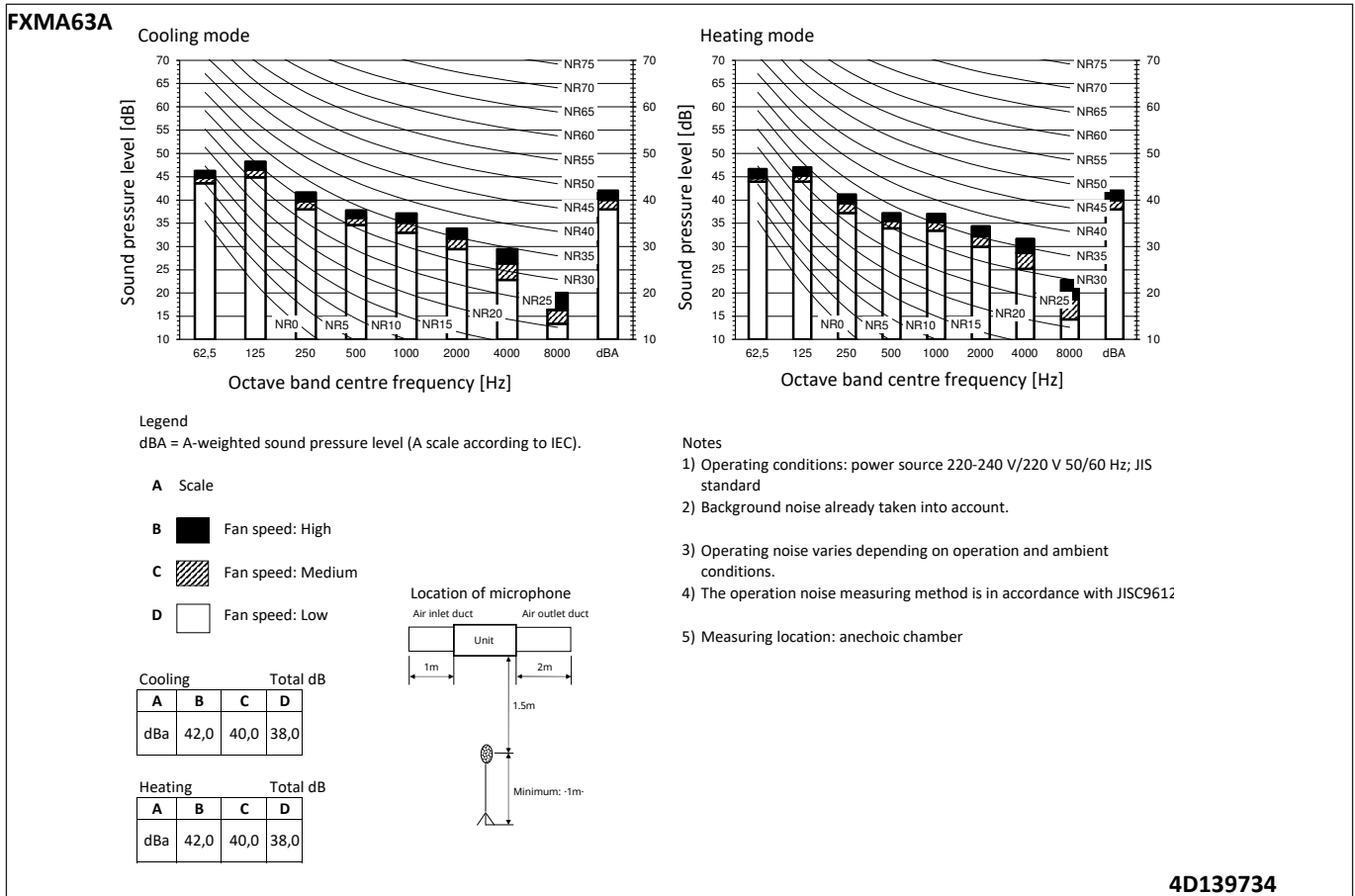
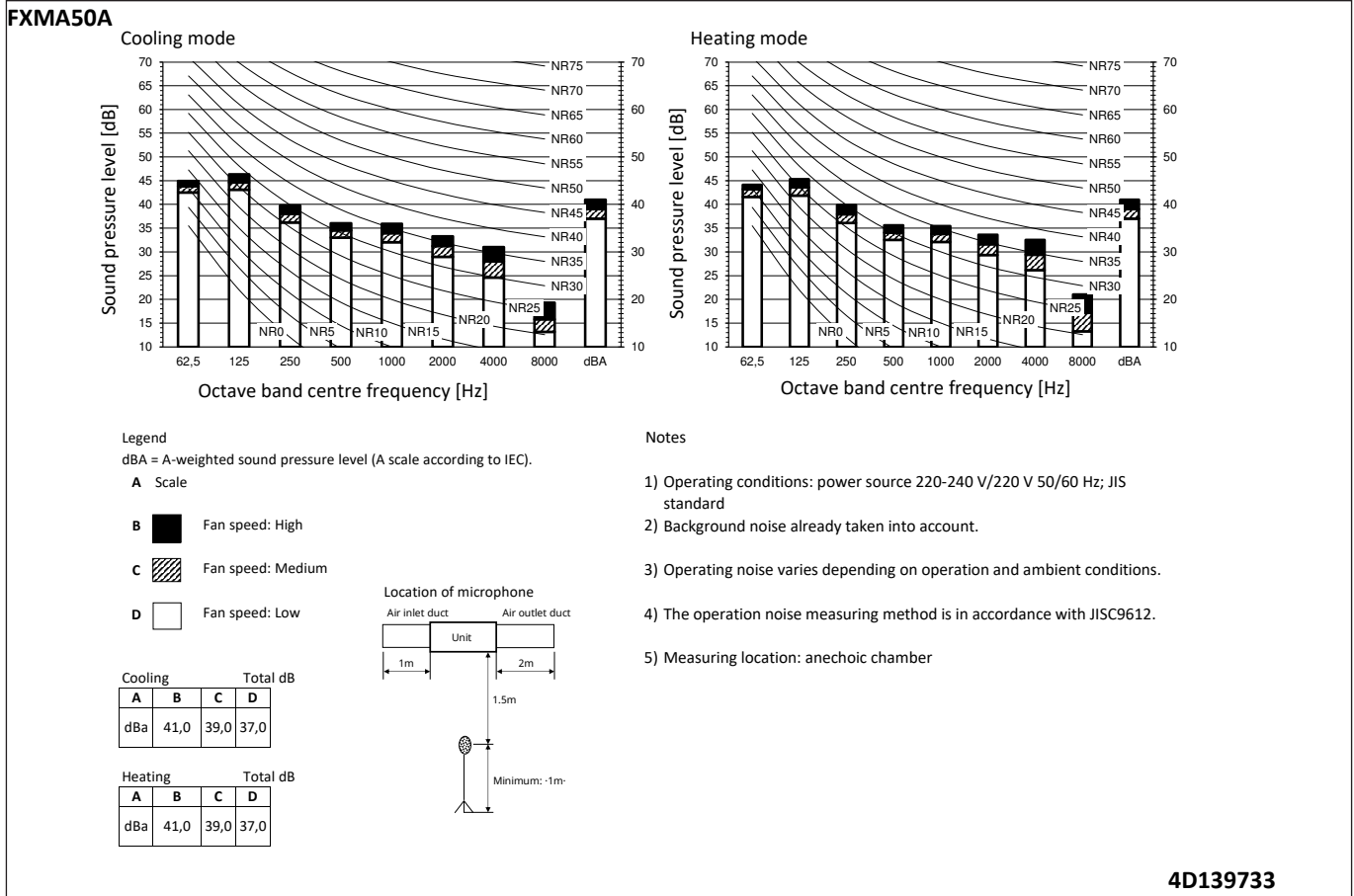
Notes

1. dBA = A-weighted sound power level (A scale according to IEC).
2. Reference acoustic power 0 dB =  $10^{-6}$  W
3. Measured according to ISO 3744

4D140666

# 10 Sound data

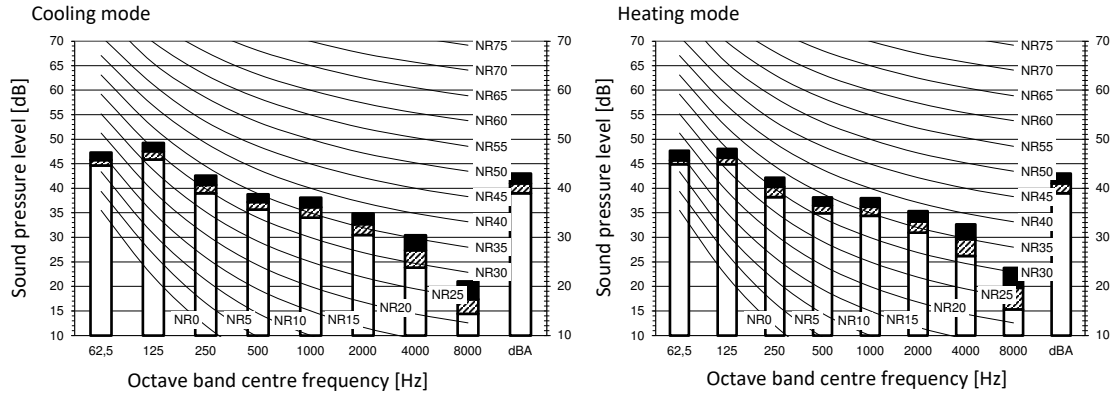
## 10 - 2 Sound Pressure Spectrum



# 10 Sound data

## 10 - 2 Sound Pressure Spectrum

### FXMA80A

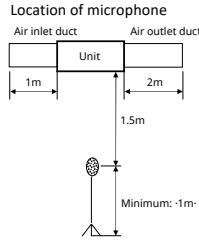


Legend  
 dBA = A-weighted sound pressure level (A scale according to IEC).

- A** Scale
- B** Fan speed: High
  - C** Fan speed: Medium
  - D** Fan speed: Low

| Cooling | Total dB |      |      |  |
|---------|----------|------|------|--|
| A       | B        | C    | D    |  |
| dBa     | 43,0     | 41,0 | 39,0 |  |

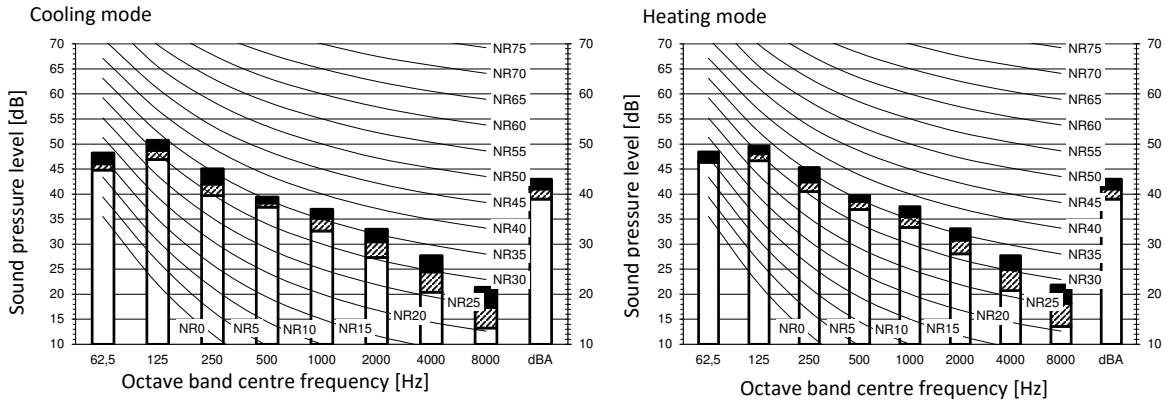
| Heating | Total dB |      |      |  |
|---------|----------|------|------|--|
| A       | B        | C    | D    |  |
| dBa     | 43,0     | 41,0 | 39,0 |  |



- Notes
- 1) Operating conditions: power source 220-240 V/220 V 50/60 Hz; JIS standard
  - 2) Background noise already taken into account.
  - 3) Operating noise varies depending on operation and ambient conditions.
  - 4) The operation noise measuring method is in accordance with JISC9612.
  - 5) Measuring location: anechoic chamber

4D139737

### FXMA100A

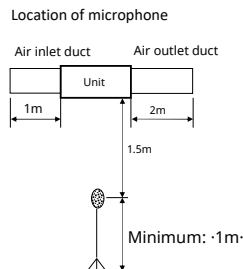


Legend  
 dBA = A-weighted sound pressure level (A scale according to IEC).

- A** Scale
- B** Fan speed: High
  - C** Fan speed: Medium
  - D** Fan speed: Low

| Cooling | Total dB |      |      |  |
|---------|----------|------|------|--|
| A       | B        | C    | D    |  |
| dBa     | 43,0     | 41,0 | 39,0 |  |

| Heating | Total dB |      |      |  |
|---------|----------|------|------|--|
| A       | B        | C    | D    |  |
| dBa     | 43,0     | 41,0 | 39,0 |  |



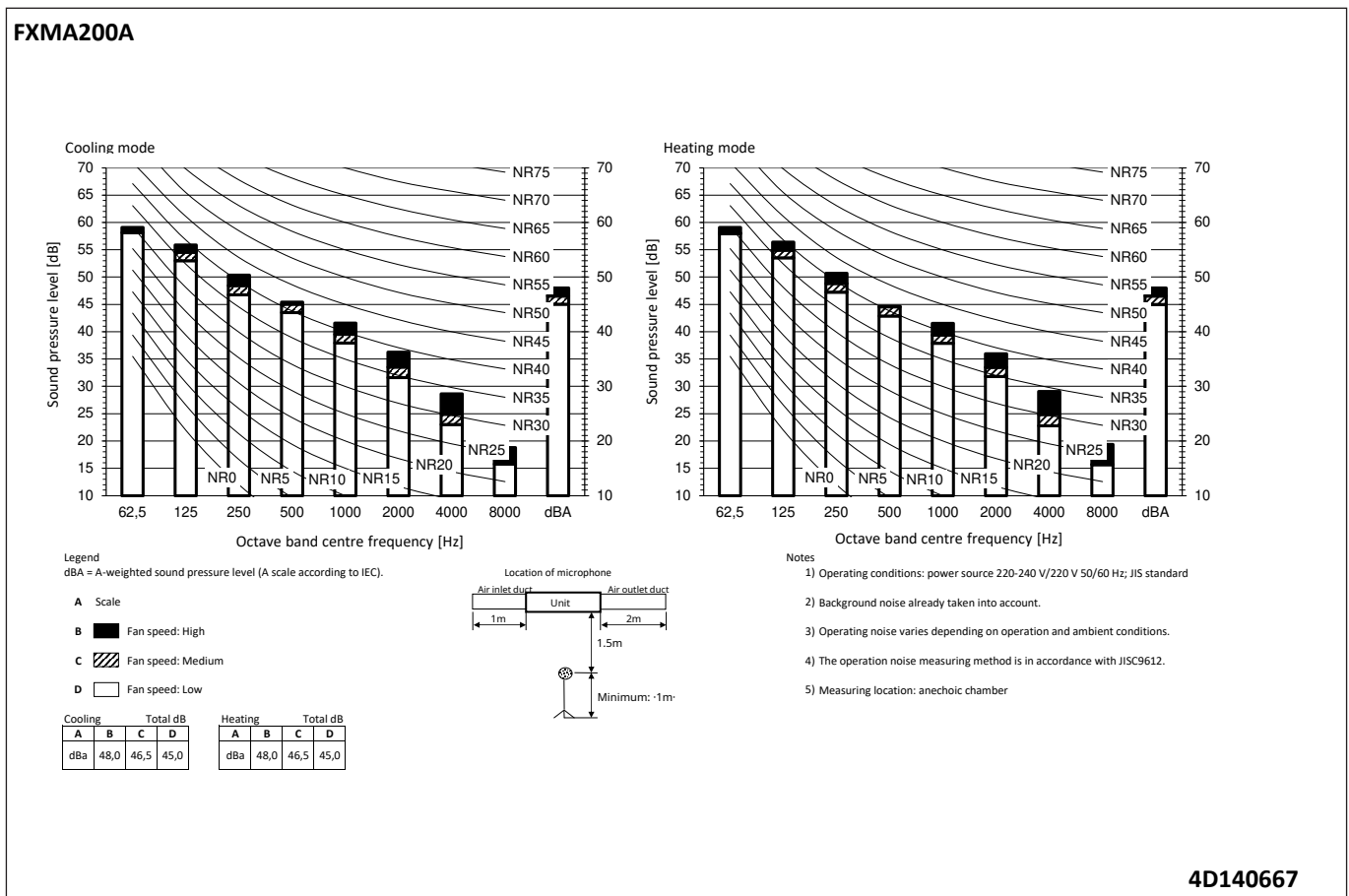
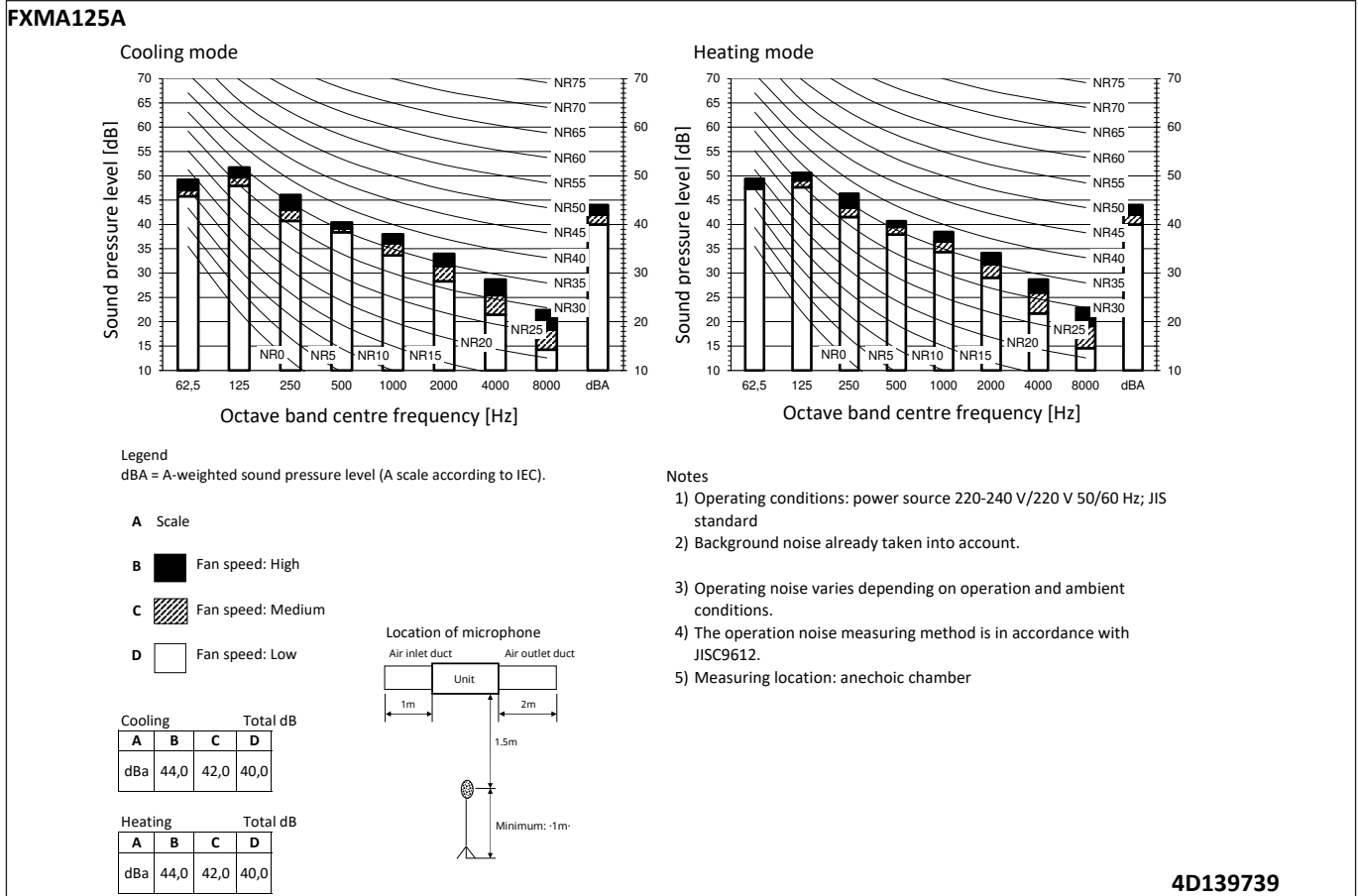
- Notes
- 1) Operating conditions: power source 220-240 V/220 V 50/60 Hz; JIS standard
  - 2) Background noise already taken into account.
  - 3) Operating noise varies depending on operation and ambient conditions.
  - 4) The operation noise measuring method is in accordance with JISC9612.
  - 5) Measuring location: anechoic chamber

4D139738



# 10 Sound data

## 10 - 2 Sound Pressure Spectrum

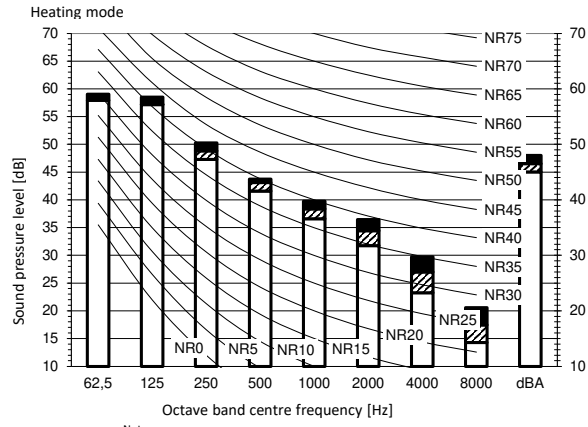
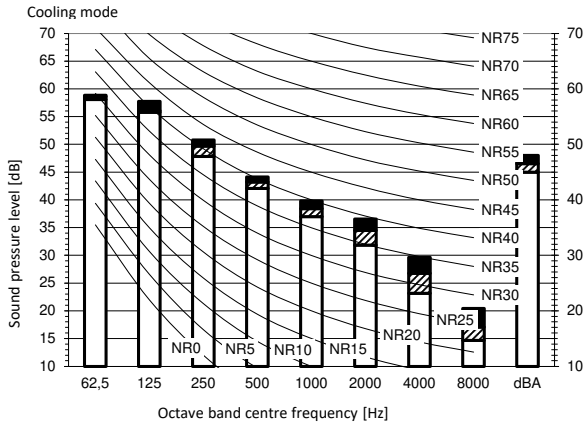


# 10 Sound data

## 10 - 2 Sound Pressure Spectrum

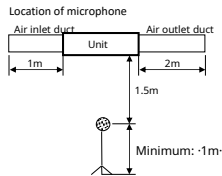
10

### FXMA250A



Legend  
dBA = A-weighted sound pressure level (A scale according to IEC).

- A Scale
- B Fan speed: High
- C Fan speed: Medium
- D Fan speed: Low



| Cooling  |      |      |      | Heating |      |      |      |   |
|----------|------|------|------|---------|------|------|------|---|
|          | A    | B    | C    | D       | A    | B    | C    | D |
| Total dB | 48,0 | 46,5 | 45,0 |         | 48,0 | 46,5 | 45,0 |   |

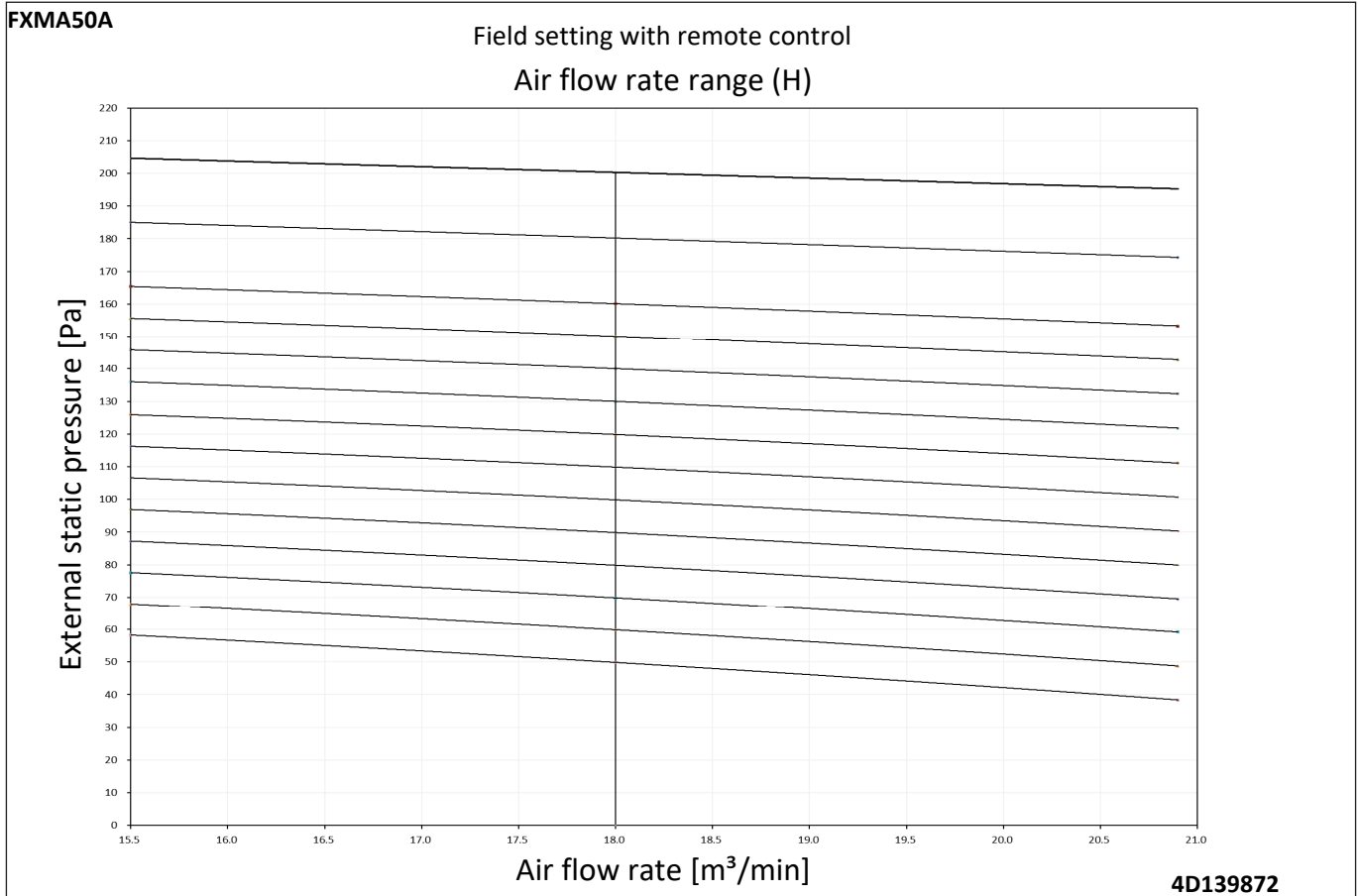
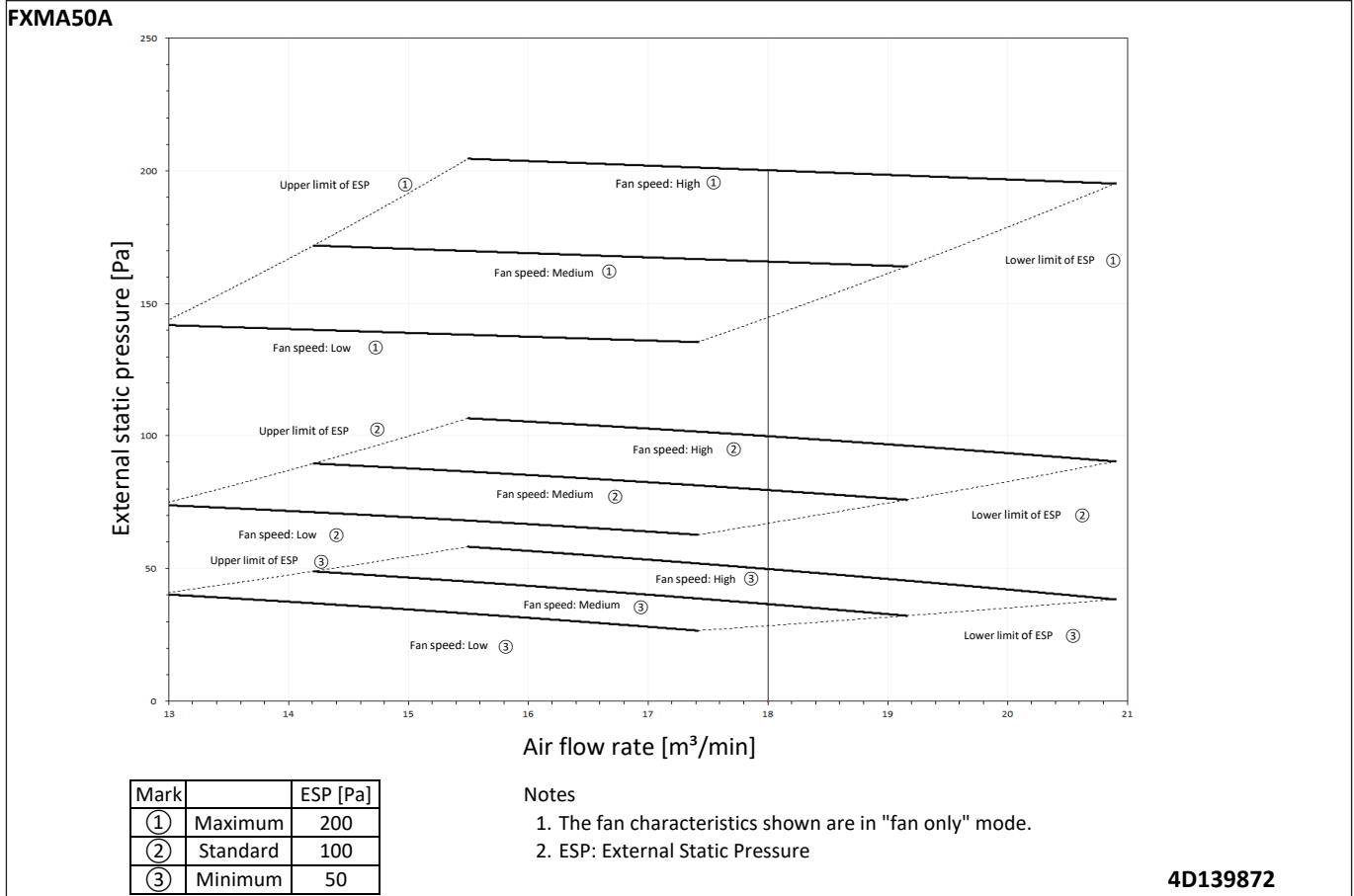
Notes

- 1) Operating conditions: power source 220-240 V/220 V 50/60 Hz; JIS standard
- 2) Background noise already taken into account.
- 3) Operating noise varies depending on operation and ambient conditions.
- 4) The operation noise measuring method is in accordance with JISC9612.
- 5) Measuring location: anechoic chamber

4D140668

# 11 Fan characteristics

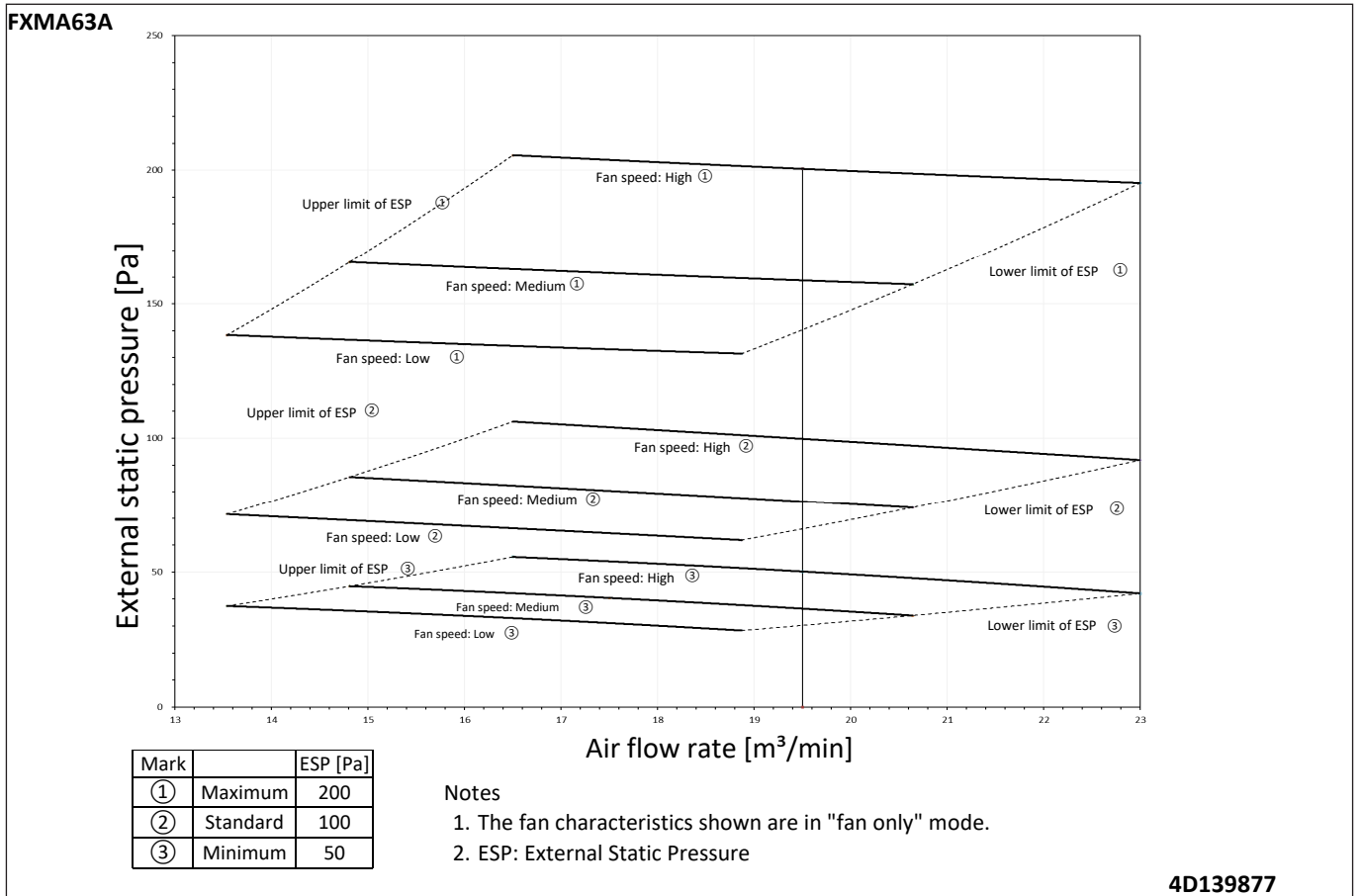
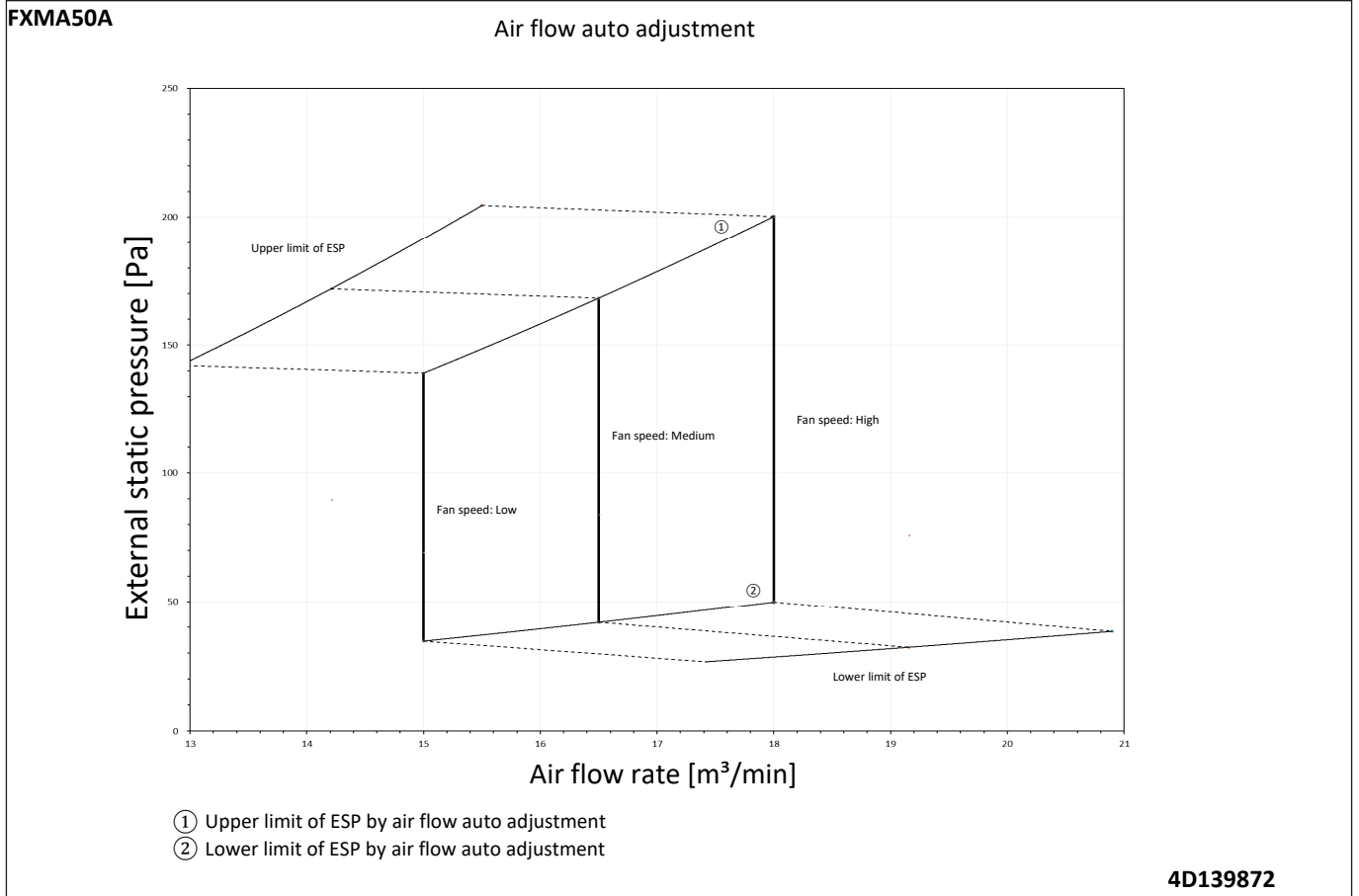
## 11 - 1 Fan Characteristics



# 11 Fan characteristics

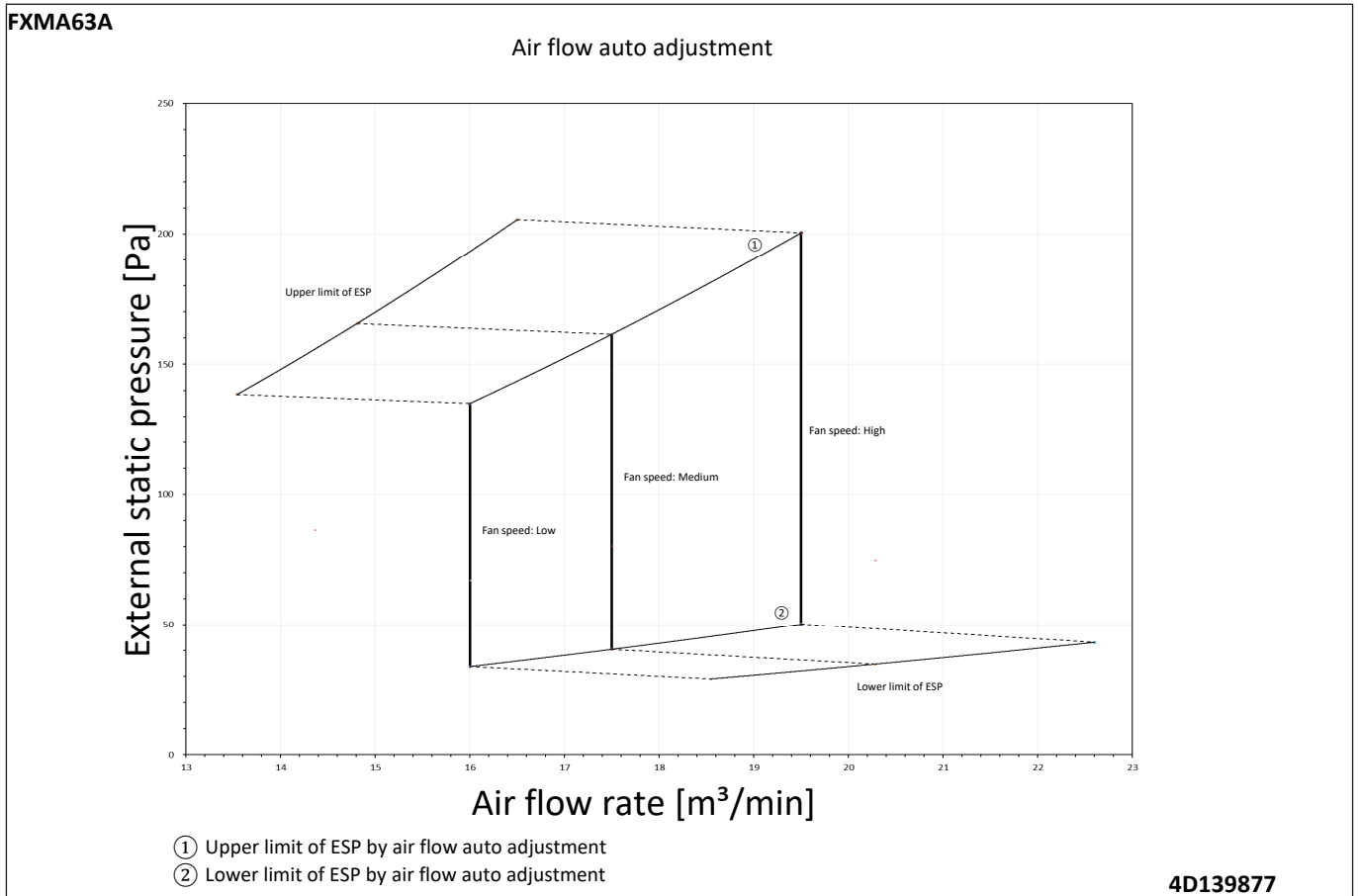
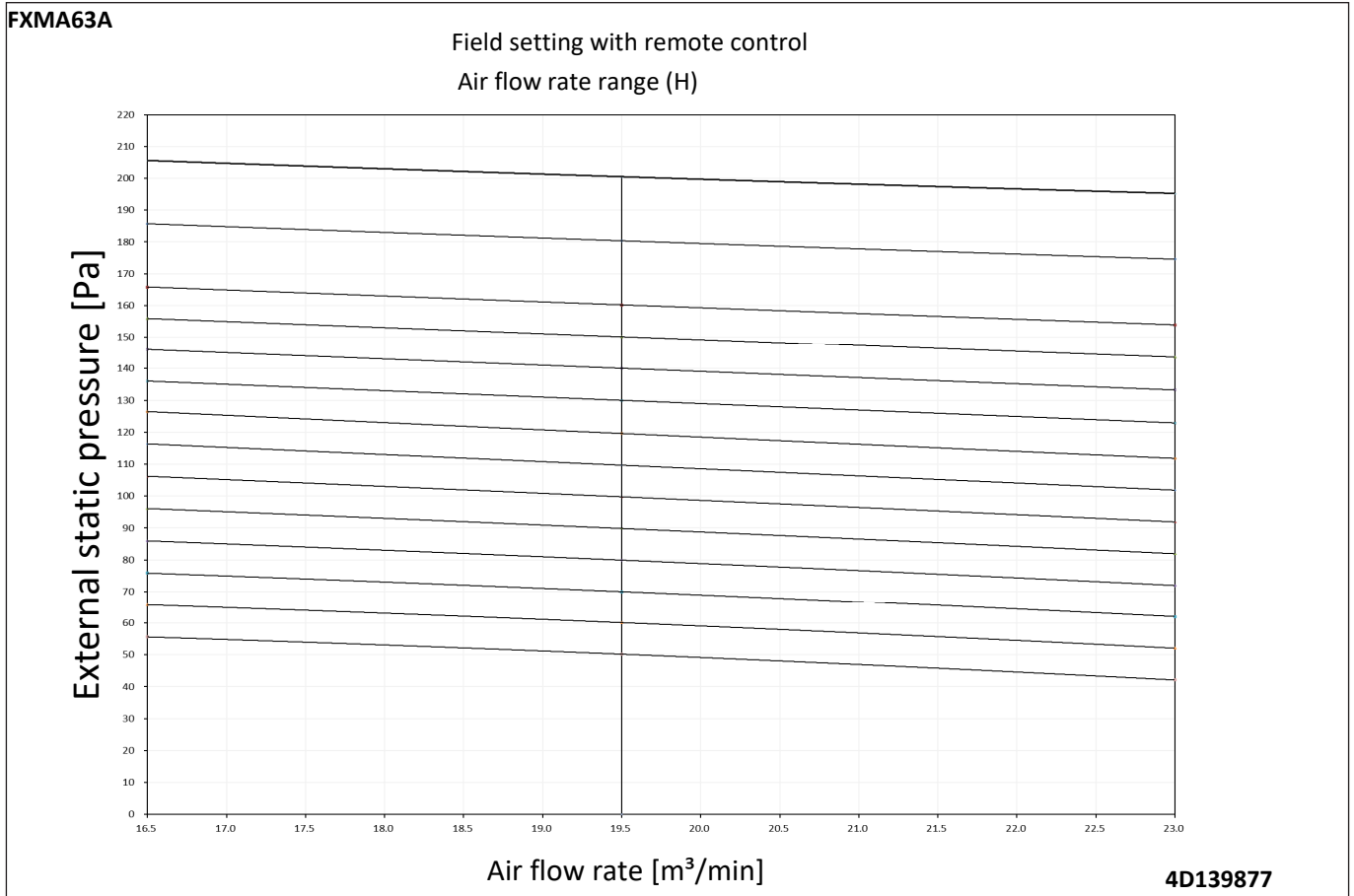
## 11 - 1 Fan Characteristics

11



# 11 Fan characteristics

## 11 - 1 Fan Characteristics

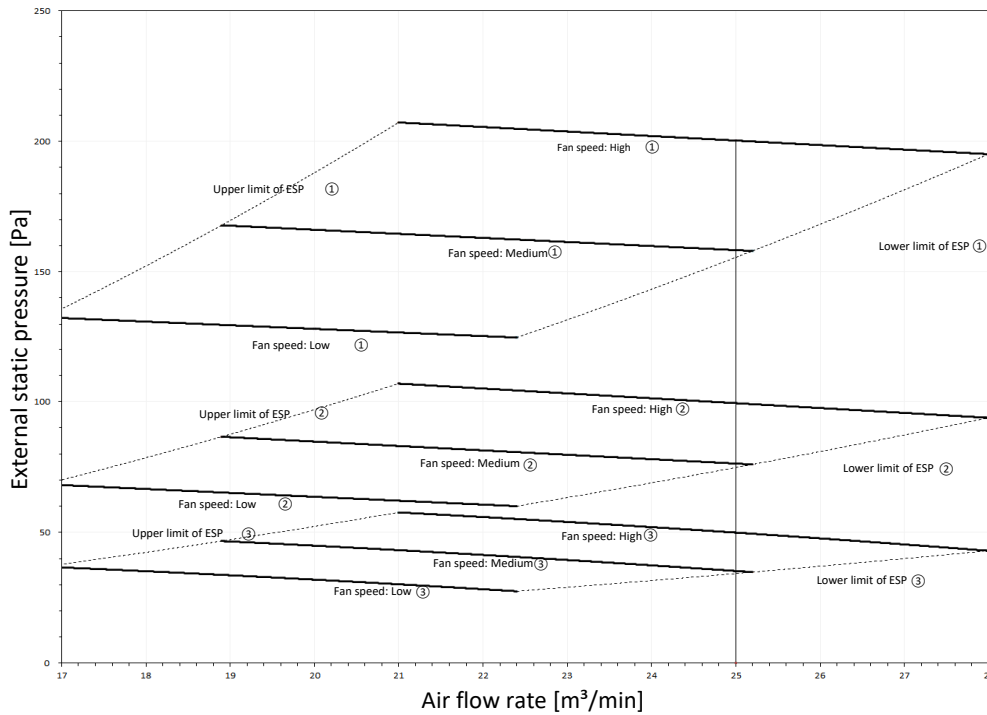


# 11 Fan characteristics

## 11 - 1 Fan Characteristics

11

FXMA80A



| Mark |          | ESP [Pa] |
|------|----------|----------|
| ①    | Maximum  | 200      |
| ②    | Standard | 100      |
| ③    | Minimum  | 50       |

Notes

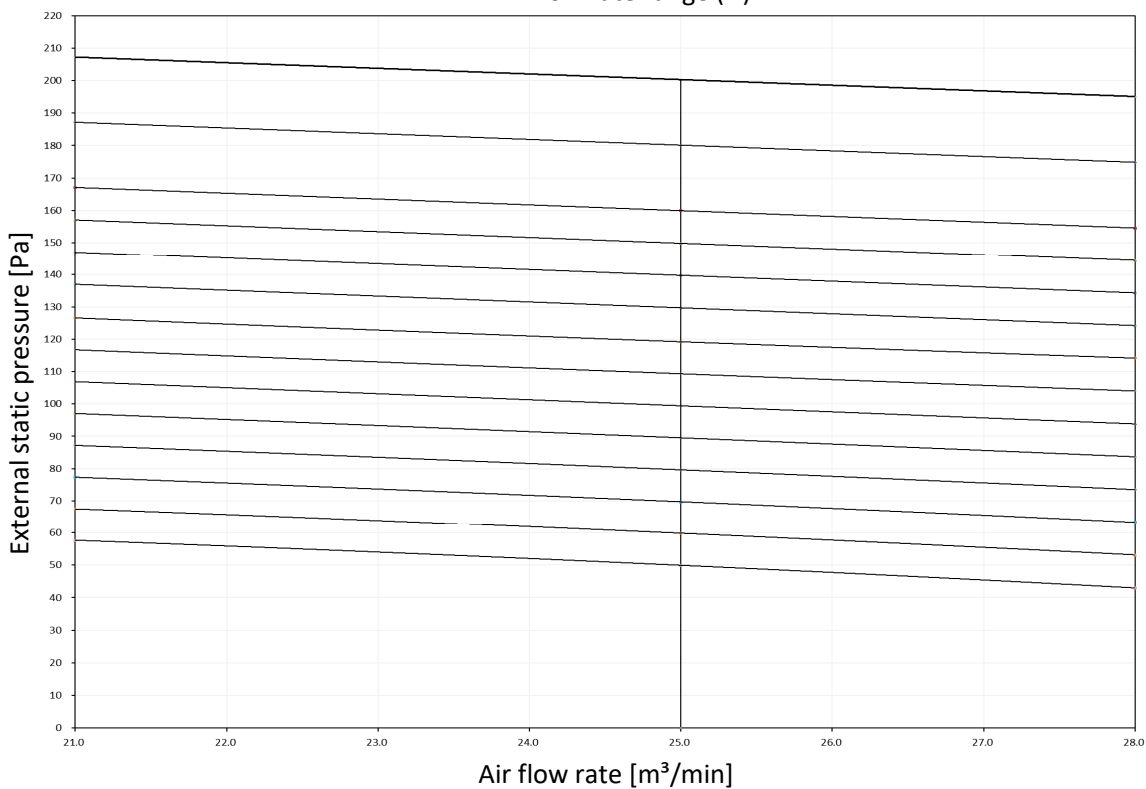
1. The fan characteristics shown are in "fan only" mode.
2. ESP: External Static Pressure

4D139878

FXMA80A

Field setting with remote control

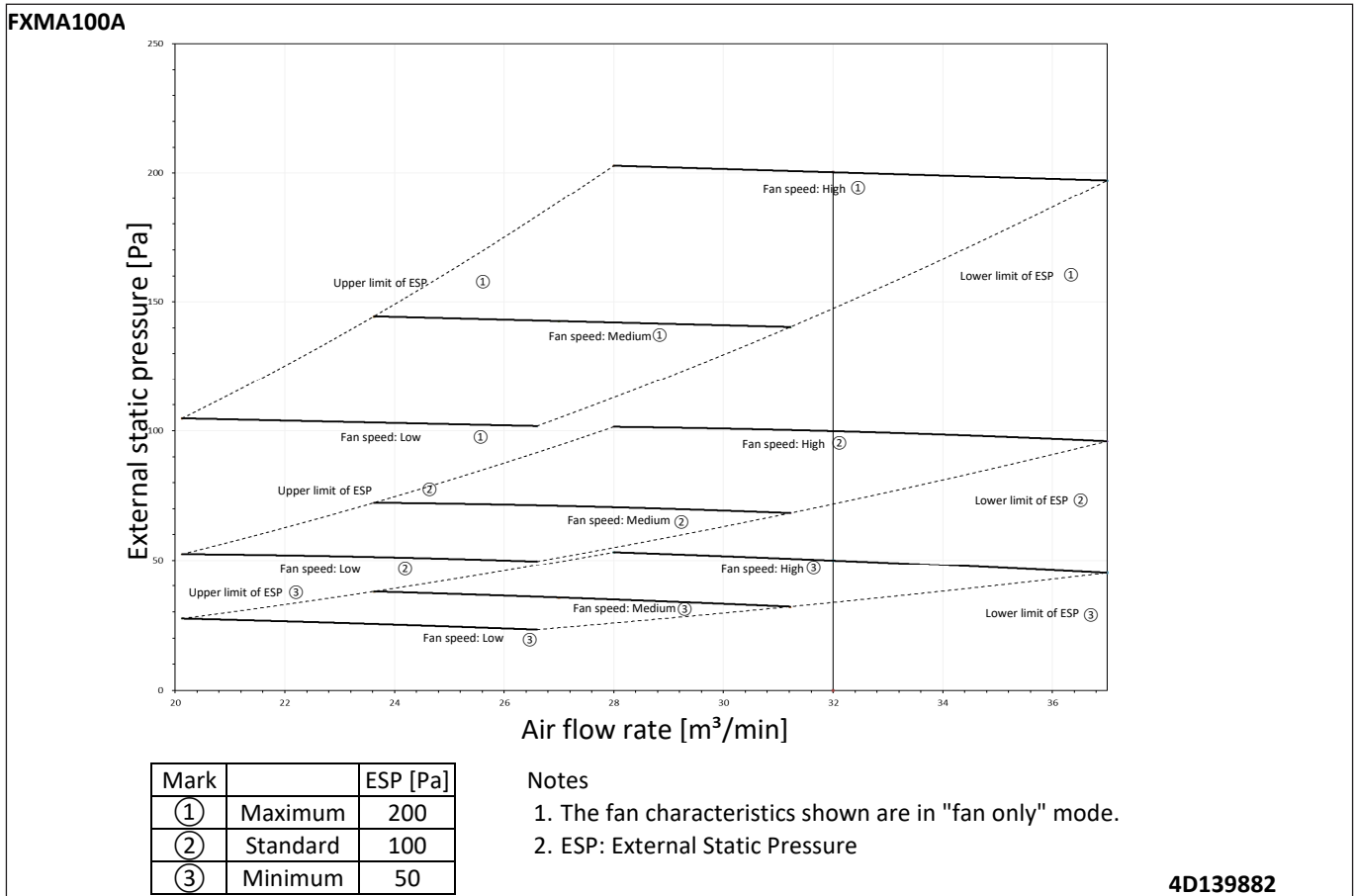
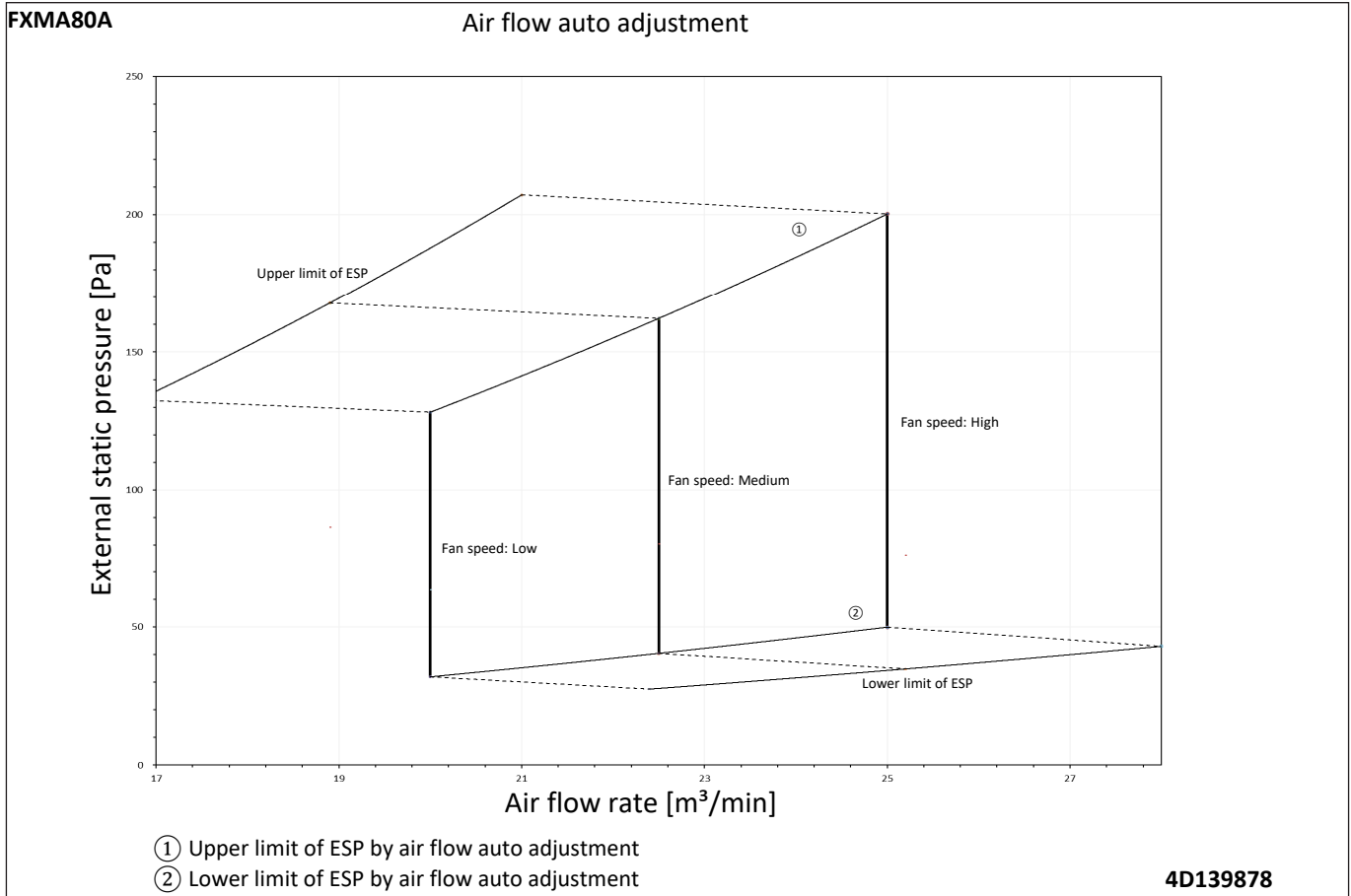
Air flow rate range (H)



4D139878

# 11 Fan characteristics

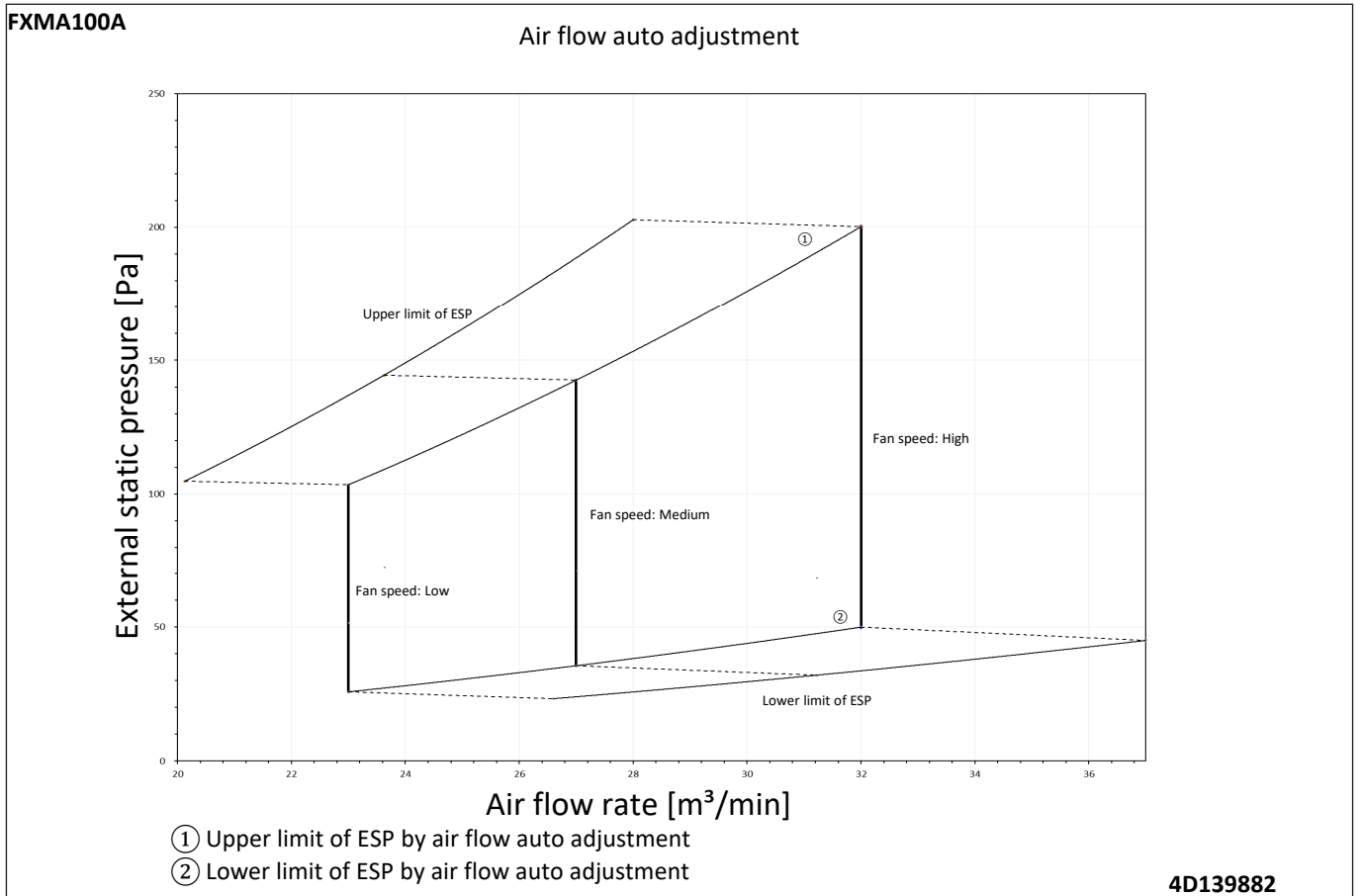
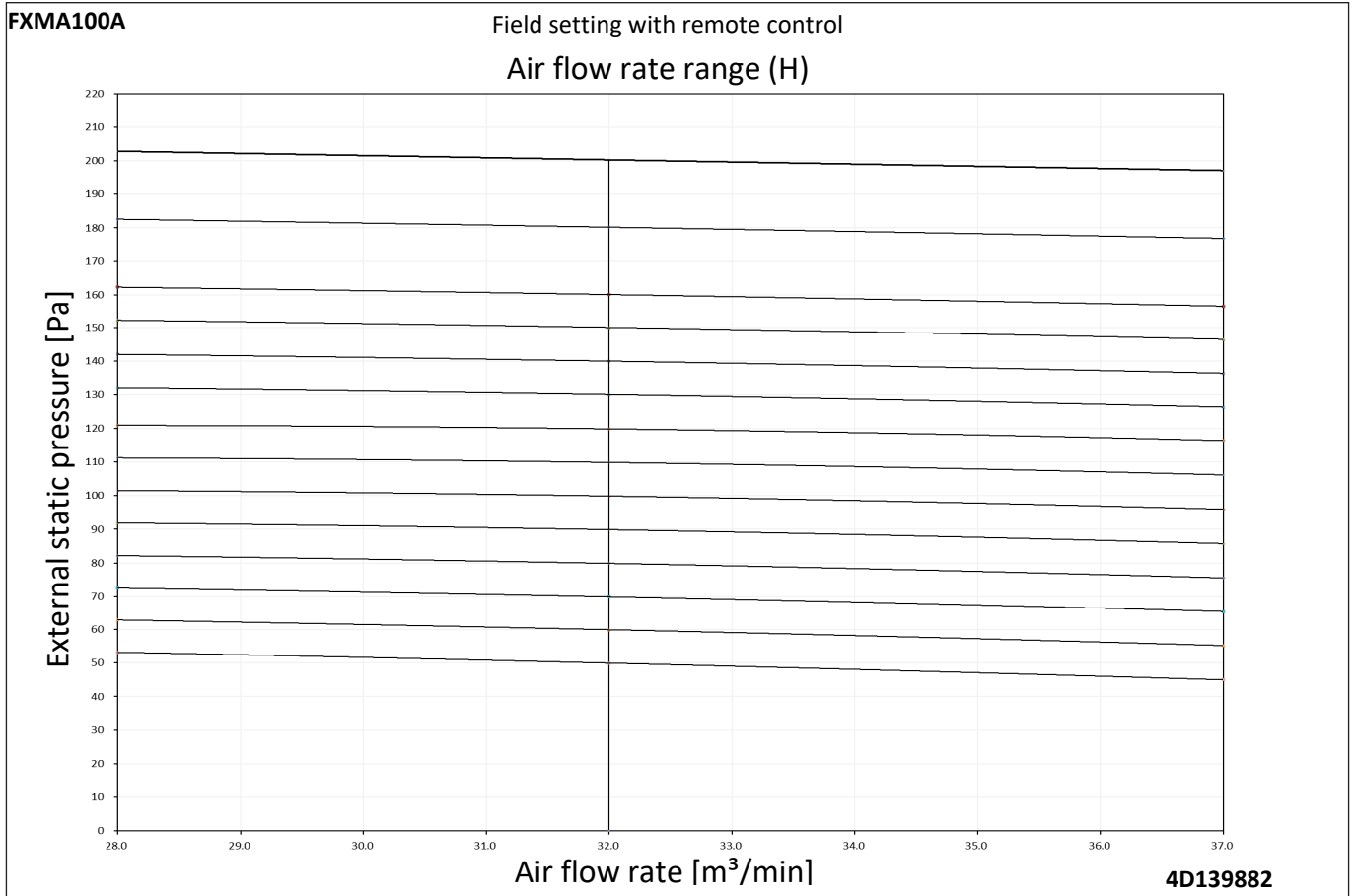
## 11 - 1 Fan Characteristics



# 11 Fan characteristics

## 11 - 1 Fan Characteristics

11

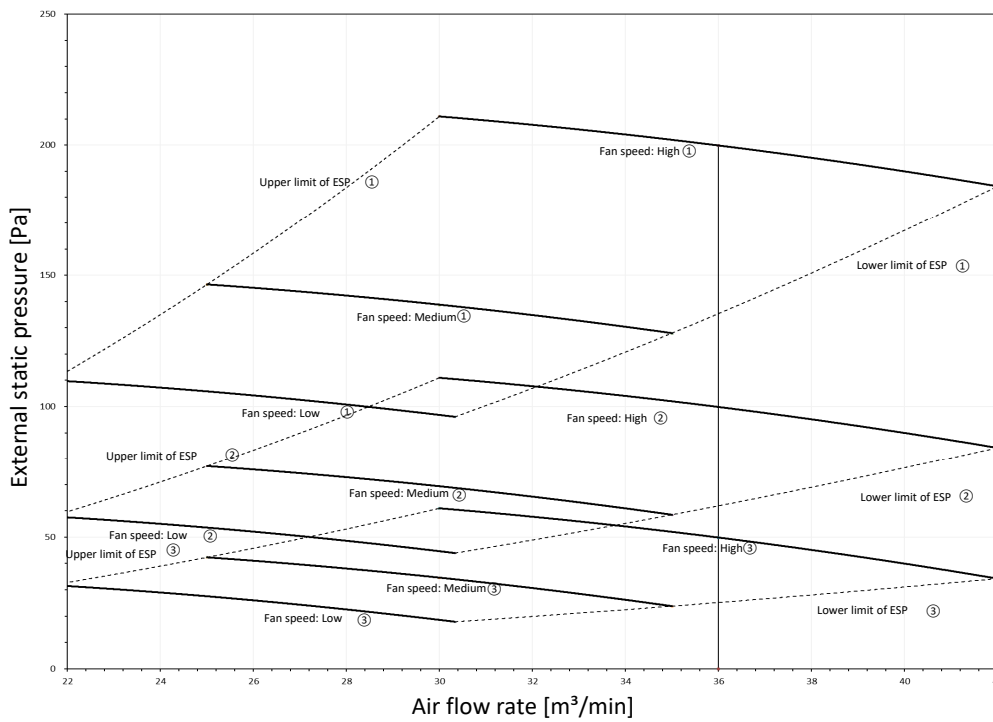




# 11 Fan characteristics

## 11 - 1 Fan Characteristics

FXMA125A



| Mark |          | ESP [Pa] |
|------|----------|----------|
| ①    | Maximum  | 200      |
| ②    | Standard | 100      |
| ③    | Minimum  | 50       |

Notes

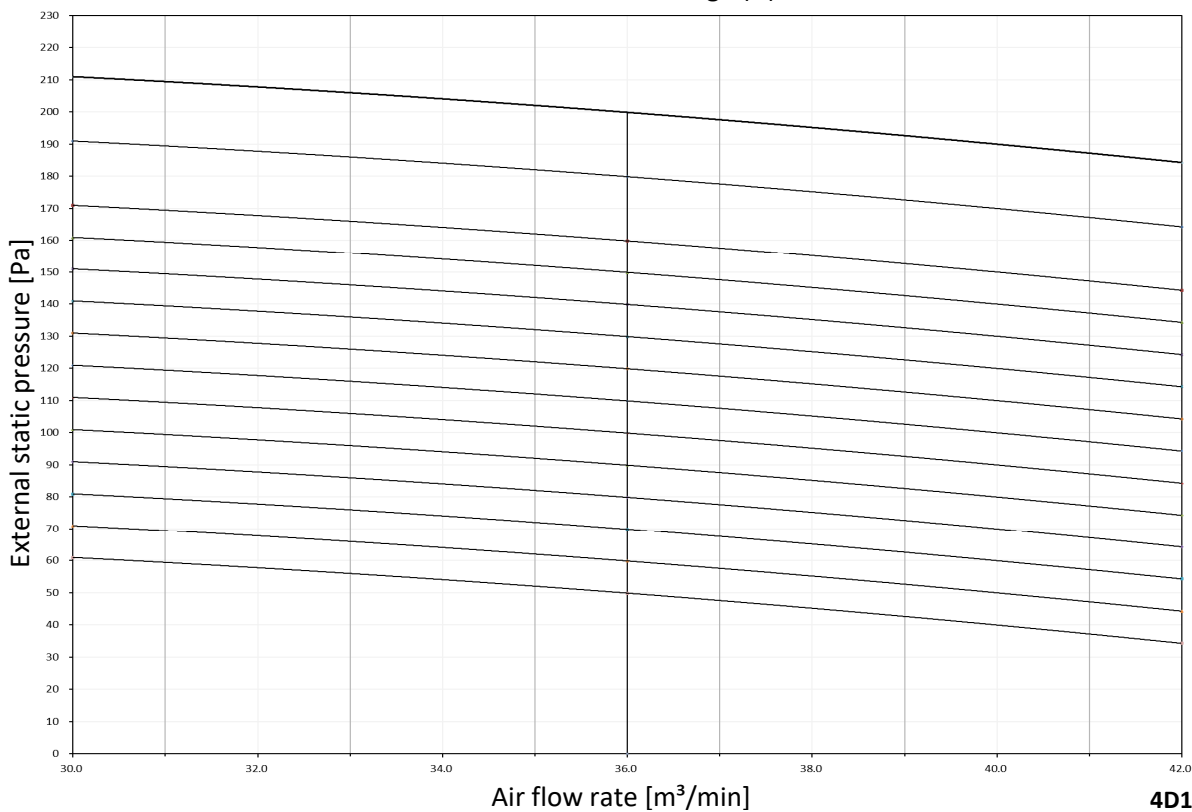
- 1. The fan characteristics shown are in "fan only" mode.
- 2. ESP: External Static Pressure

4D139884

FXMA125A

Field setting with remote control

Air flow rate range (H)

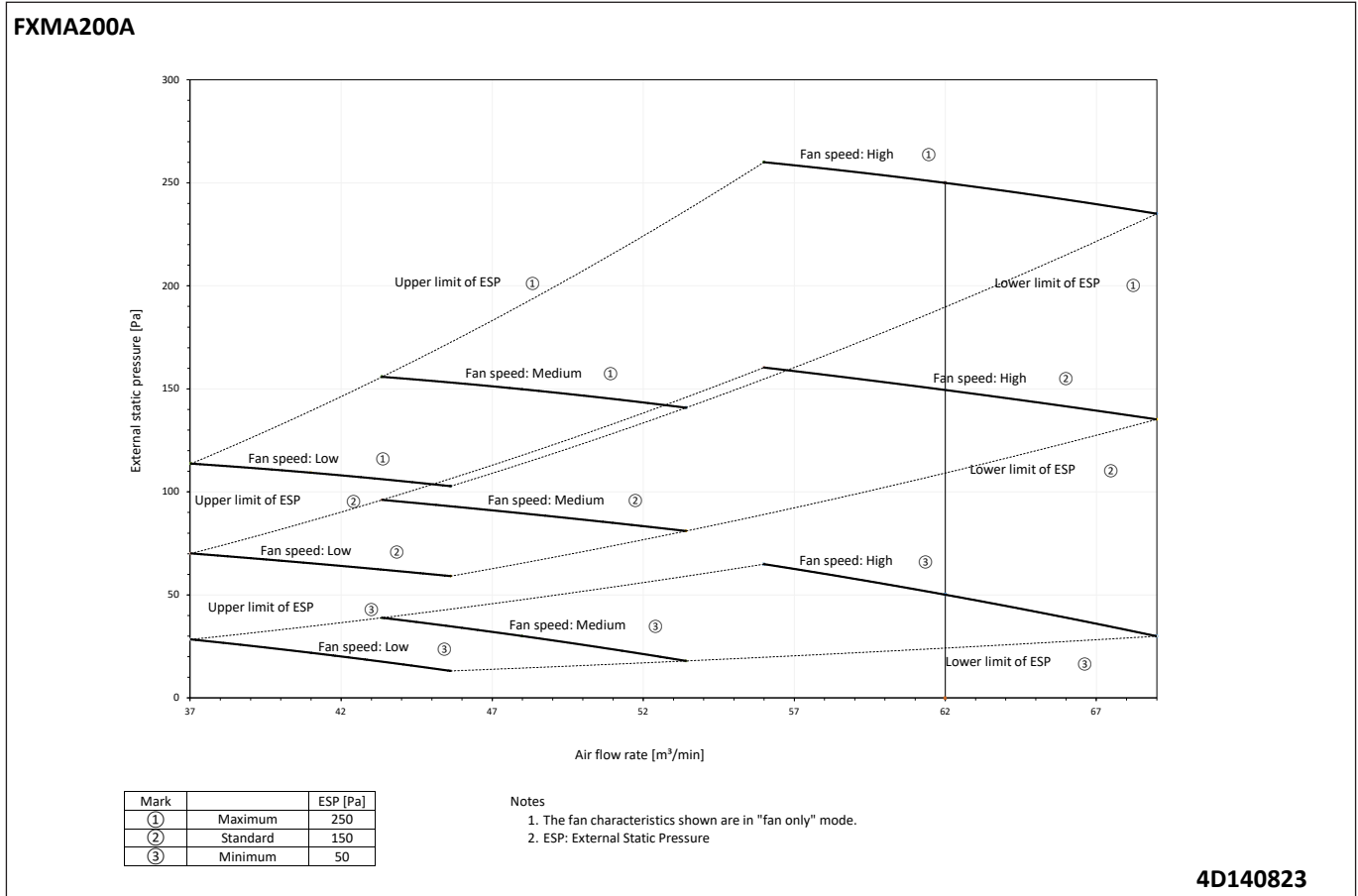


4D139884

# 11 Fan characteristics

## 11 - 1 Fan Characteristics

11

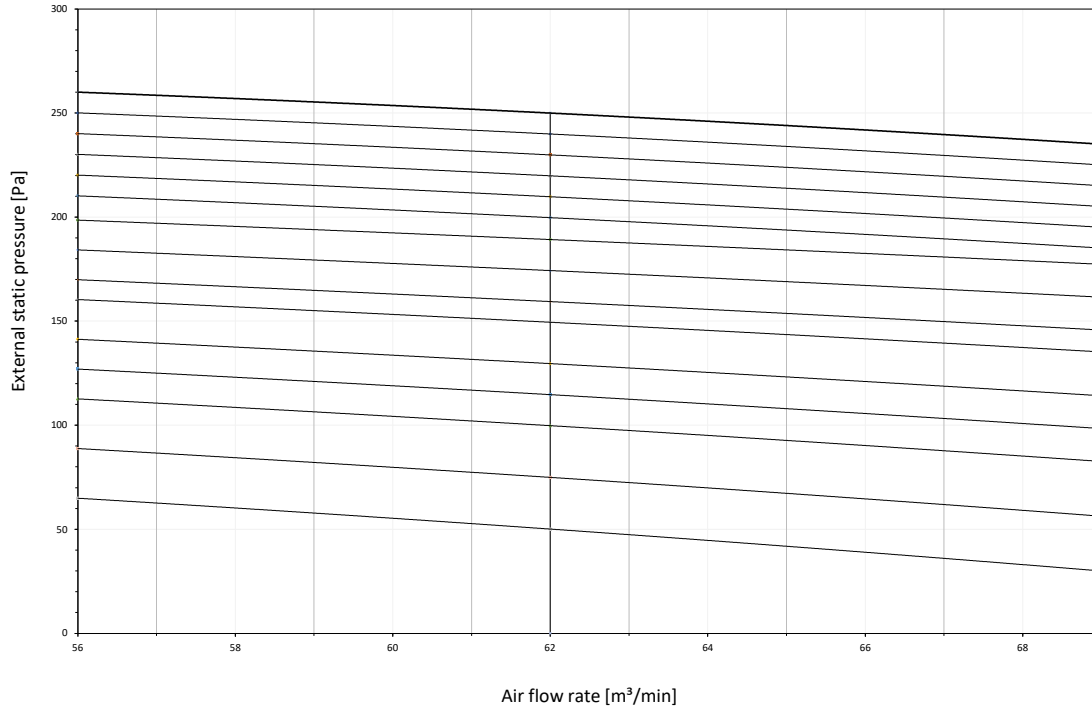


# 11 Fan characteristics

## 11 - 1 Fan Characteristics

FXMA200A

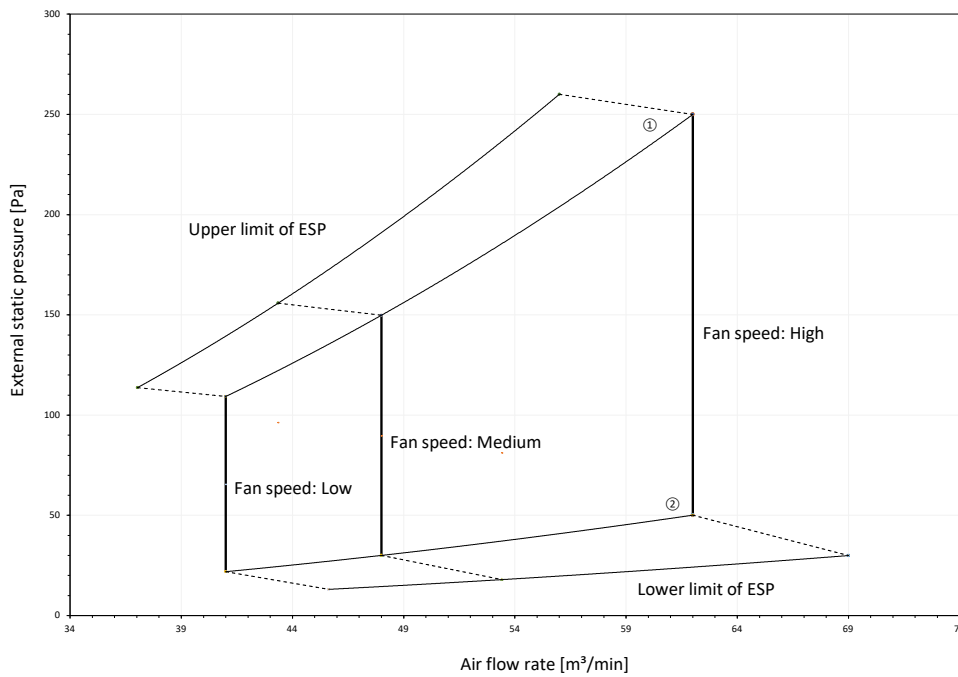
Field setting with remote control  
Air flow rate range (H)



4D140823

FXMA200A

Air flow auto adjustment



- ① Upper limit of ESP by air flow auto adjustment
- ② Lower limit of ESP by air flow auto adjustment

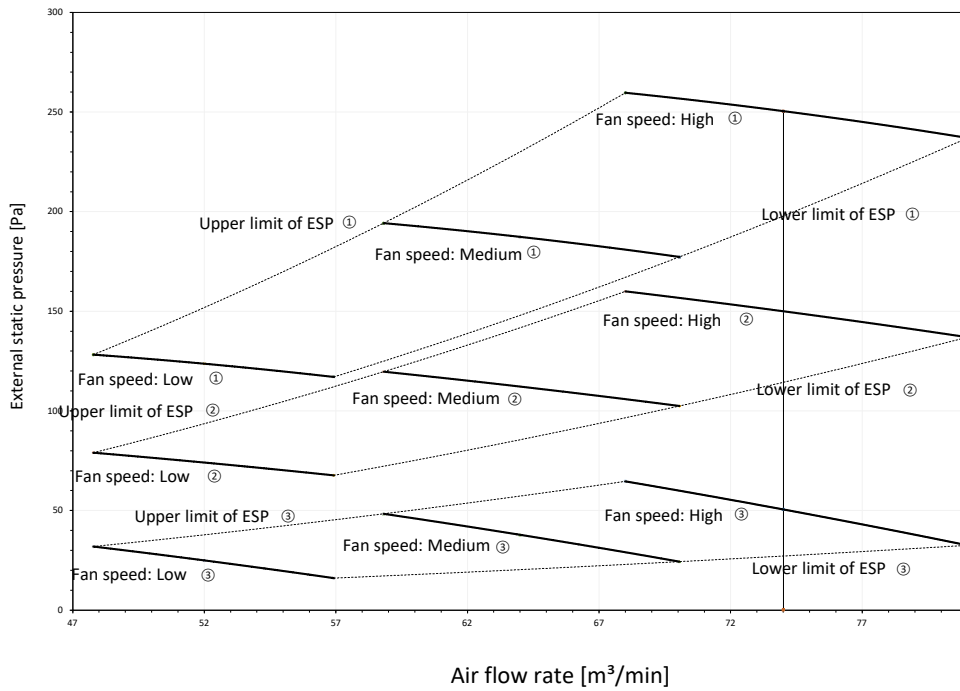
4D140823

# 11 Fan characteristics

## 11 - 1 Fan Characteristics

11

FXMA250A



| Mark |          | ESP [Pa] |
|------|----------|----------|
| ①    | Maximum  | 250      |
| ②    | Standard | 150      |
| ③    | Minimum  | 50       |

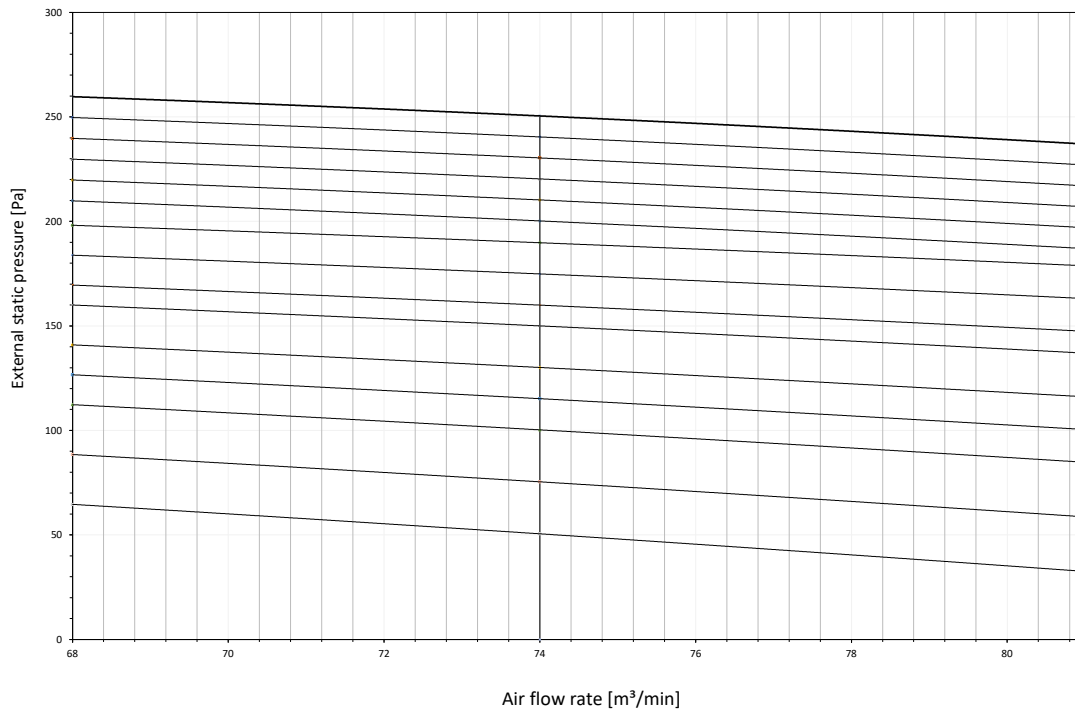
Notes

1. The fan characteristics shown are in "fan only" mode.
2. ESP: External Static Pressure

4D140824

FXMA250A

Field setting with remote control  
Air flow rate range (H)



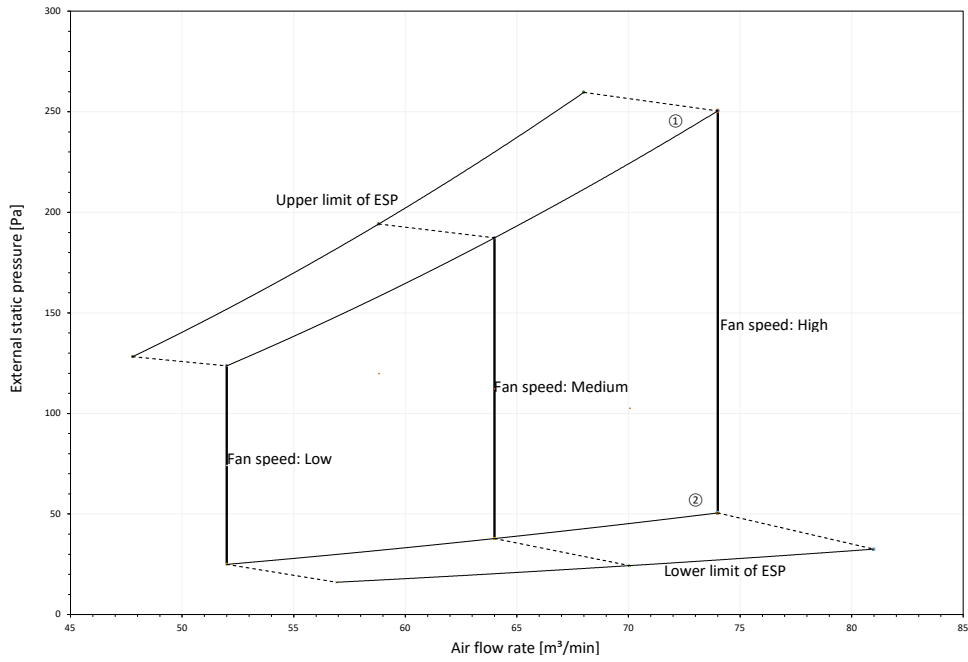
4D140824

# 11 Fan characteristics

## 11 - 1 Fan Characteristics

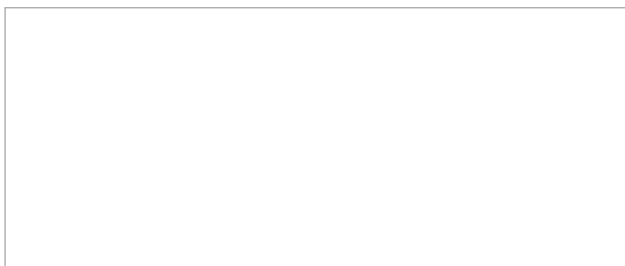
FXMA250A

Air flow auto adjustment



- ① Upper limit of ESP by air flow auto adjustment
- ② Lower limit of ESP by air flow auto adjustment

4D140824



EEDEN22B

10/2022



The present publication is drawn up by way of information only and does not constitute an offer binding upon Daikin Europe N.V. / Daikin Central Europe HandelsGmbH. Daikin Europe N.V. / Daikin Central Europe HandelsGmbH have compiled the content of this publication to the best of their knowledge. No express or implied warranty is given for the completeness, accuracy, reliability or fitness for particular purpose of its content and the products and services presented therein. Specifications are subject to change without prior notice. Daikin Europe N.V. / Daikin Central Europe HandelsGmbH explicitly rejects any liability for any direct or indirect damage, in the broadest sense, arising from or related to the use and/or interpretation of this publication. All content is copyrighted by Daikin Europe N.V.