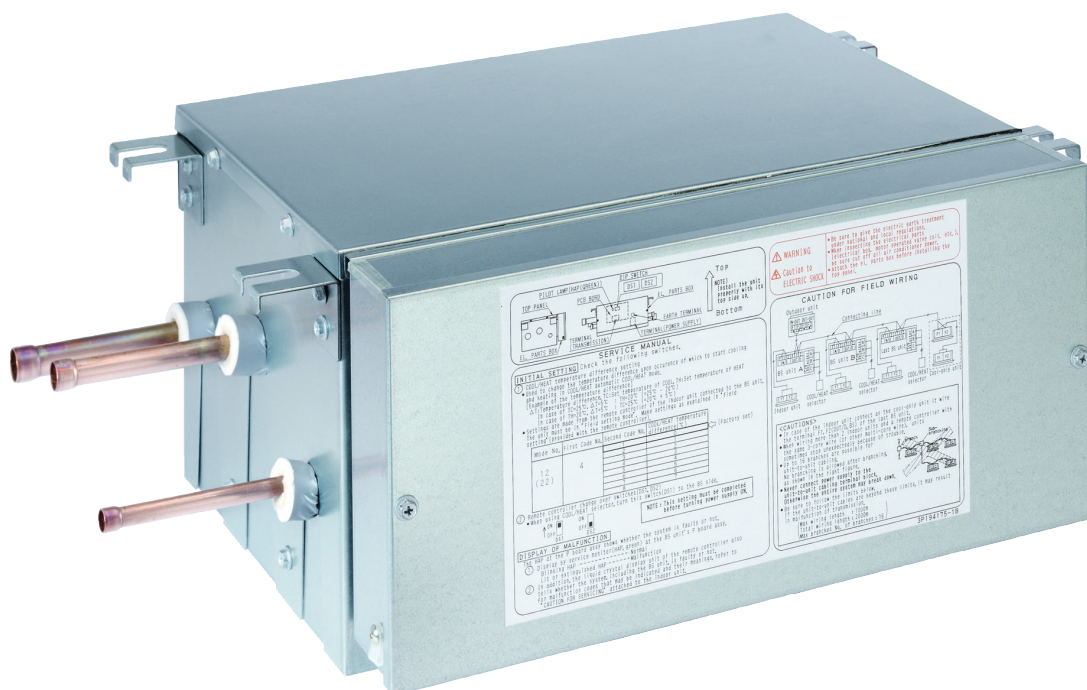


Individual branch selector for VRV IV heat recovery Air Conditioning Technical Data BS1Q-A



BS1Q10A7V1B
BS1Q16A7V1B
BS1Q25A7V1B

TABLE OF CONTENTS

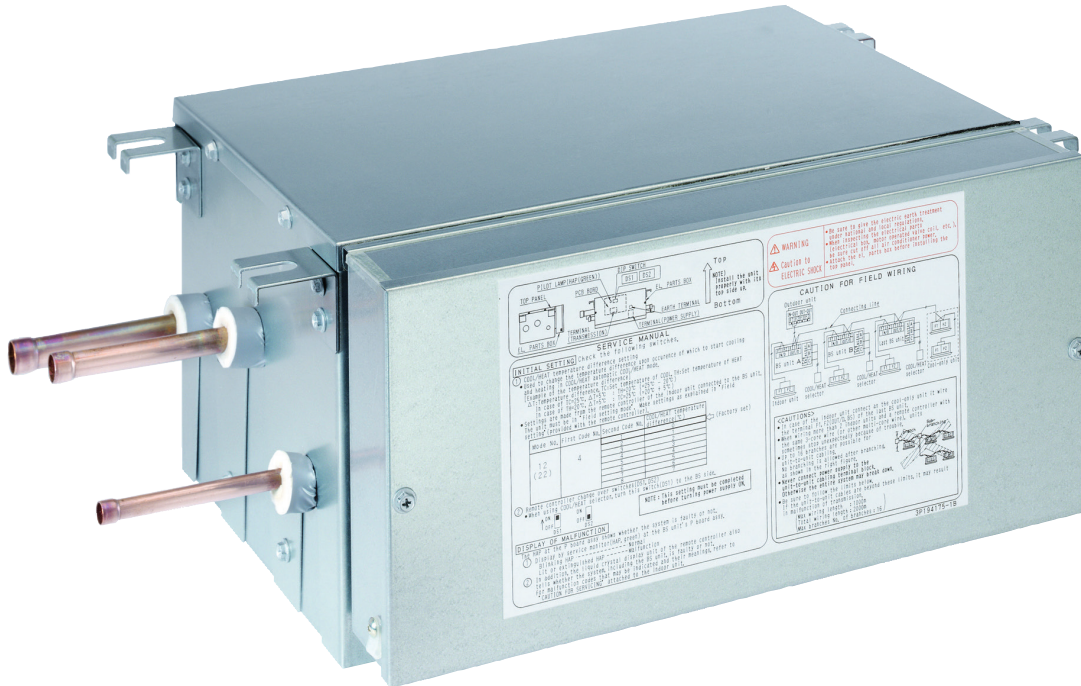
BS1Q-A

1	Features	4
	BS1Q-A	4
2	Specifications	5
3	Electrical data	6
4	Safety device settings	7
5	Options	8
6	Dimensional drawings	9
7	Centre of gravity	11
8	Piping diagrams	12
9	Wiring diagrams	13
	Wiring Diagrams - Single Phase	13
10	Sound data	14
	Sound Pressure Spectrum	14

Features

1 - 1 BS1Q-A

- › Unique range of single and multi BS boxes for flexible and fast design
- › Compact & light to install
- › Ideal for remote rooms as no drain piping is needed
- › Allows integration of server rooms into the heat recovery solution thanks to technical cooling function
- › Connect up to 250 class unit (28kW)
- › Faster installation thanks to open port connection
- › Allows multi tenant applications
- › Connectable to REYQ-T, RQCEQ-P3 and RWEYQ-T8 heat recovery units



2 Specifications

2 - 1 Specifications

Technical specifications				BS1Q10A	BS1Q16A	BS1Q25A
Maximum capacity index of connectable indoor units				15 < x ≤ 100	100<x≤160	160<x≤250
Maximum number of connectable indoor units				6	8	
Casing	Material			Galvanised steel plate		
Dimensions	Unit	Height	mm	207		
		Width	mm	388		
		Depth	mm	326		
Weight	Unit	kg		12		15
Piping connections	Outdoor unit	Liquid	Type	Brazing connection		
			OD	mm	9.5	
		Gas	Type	Brazing connection		
			OD	mm	15.9	
		Dis-charge gas	Type	Brazing connection		
			OD	mm	12.7	
	Indoor unit	Liquid	Type	Brazing connection		
			OD	mm	9.5	
		Gas	Type	Brazing connection		
			OD	mm	15.9	
Sound absorbing thermal insulation				Foamed polyurethane Flame-resistant needle felt		
Power input	Cooling	Nom.	kW	0.005		
	Heating	Nom.	kW	0.005		

Standard accessories: Installation manual;Quantity: ;

Standard accessories: Insulation;Quantity: ;

Standard accessories: Accessory pipe;Quantity: ;

Standard accessories: Clamps;Quantity: ;

Electrical specifications				BS1Q10A	BS1Q16A	BS1Q25A
Power supply	Phase			1~		
	Frequency			50		
	Voltage			220-240		
	Minimum circuit amps (MCA)			0.1		
	Maximum fuse amps (MFA)			15		
	Voltage range	Max.	%	10		
		Min.	%	-10		

In case of connecting to a 150-160 type indoor unit, use the accessory pipe to match the size of the field pipe. Be sure to braze the connection between the accessory pipe and the field pipe. |

In case of connecting with a 15-50 type indoor unit, use the accessory pipe to match the size of the field pipe. Be sure to braze the connection between the accessory pipe and the field pipe. |

In case of connecting to a 160-200 type indoor unit, use the accessory pipe to match the size of the field pipe. Be sure to braze the connection between the accessory pipe and the field pipe. |

Voltage range: units are suitable for use on electrical systems where voltage supplied to unit terminal is not below or above listed range limits. |

Maximum allowable voltage range variation between phases is 2%. |

MCA/MFA: MCA = 1.25 x FLA |

MFA ≤ 4 x FLA |

Next lower standard fuse rating minimum 15A |

Select wire size based on the value of MCA |

Instead of a fuse, use a circuit breaker

3 Electrical data

3 - 1 Electrical Data

BS1Q-A

Category of unit				Power supply		Power input [W]	
Model	Hz	Voltage	Voltage range	MCA	MFA	Cooling	Heating
BS1Q10A7V1B	50	220-240	Maximum: ·264V·	0.1	15	5	5
BS1Q16A7V1B			Minimum: ·198V·				
BS1Q25A7V1B							

Symbols

MCA: Minimum Circuit Ampere (A)

MFA: Maximum Fuse Ampere (A) See note ·5·.

Notes

1. Voltage range
The units are suitable for use with electrical systems in which the voltage supplied to the unit terminals is not below or above the listed range limits.
2. The maximum allowable voltage that is unbalanced between phases is ·2·%.
3. MCA / FLA
 $MCA = 1.25 \times FLA$
 $MFA \leq 4 \times FLA$
The next lower standard fuse rating is minimum ·15· ampere.
4. Select the wire size according to the MCA.
5. Use a circuit breaker instead of a fuse.

3D087575

4 Safety device settings

4 - 1 Safety Device Settings

4

BS1Q-A

Model	Safety devices
	PCB fuse
BS1Q10A7V1B	250V 3.15A
BS1Q16A7V1B	250V 3.15A
BS1Q25A7V1B	250V 3.15A

4D087570

5 Options

5 - 1 Options

BS1Q-A

Option list

	Item	BS1Q10A	BS1Q16A	BS1Q25A
1	PCB for multi-tenant indoor units	DTA114A61		
2	Sound reduction kit	EKBSVQLNP See note ·2·.		

Notes

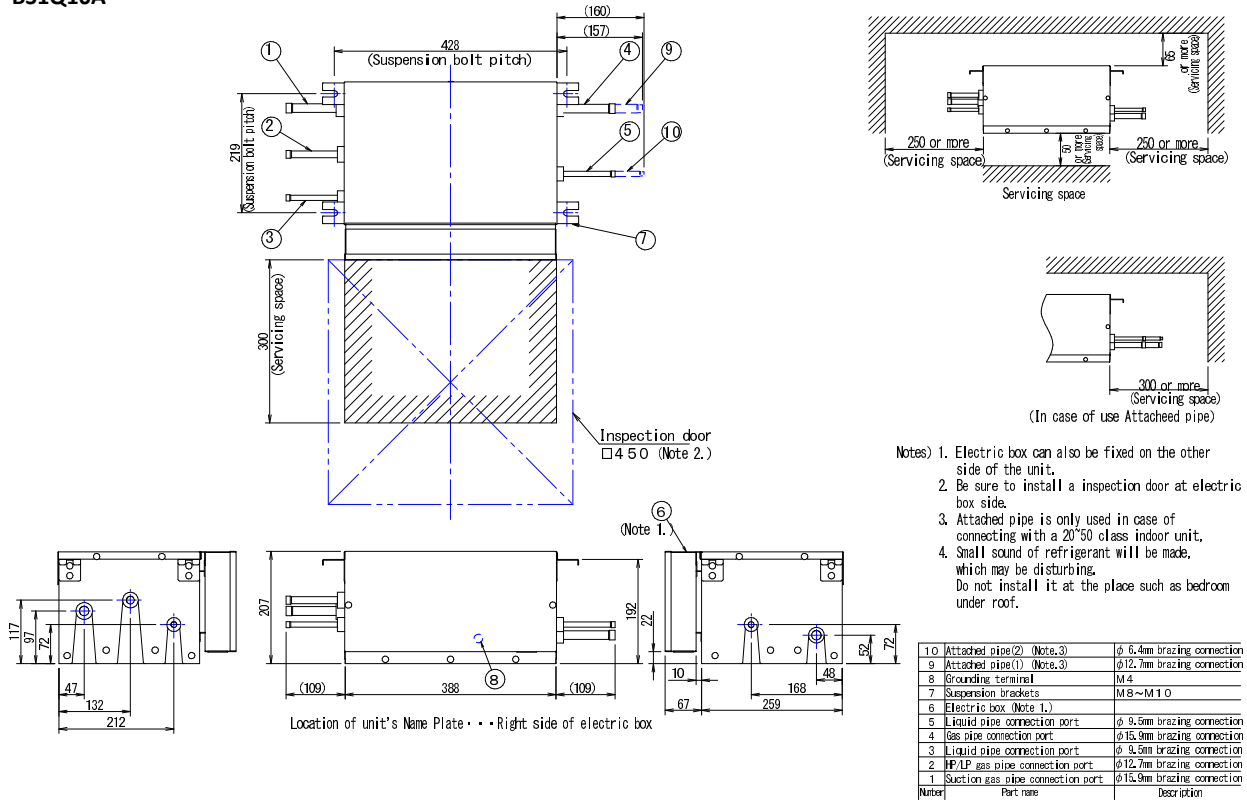
1. All options are kits
2. Only available for standard ·BS· units.
Reduces the operating sound of the ·BS· unit (requires 1 kit per unit).

3D087579

6 Dimensional drawings

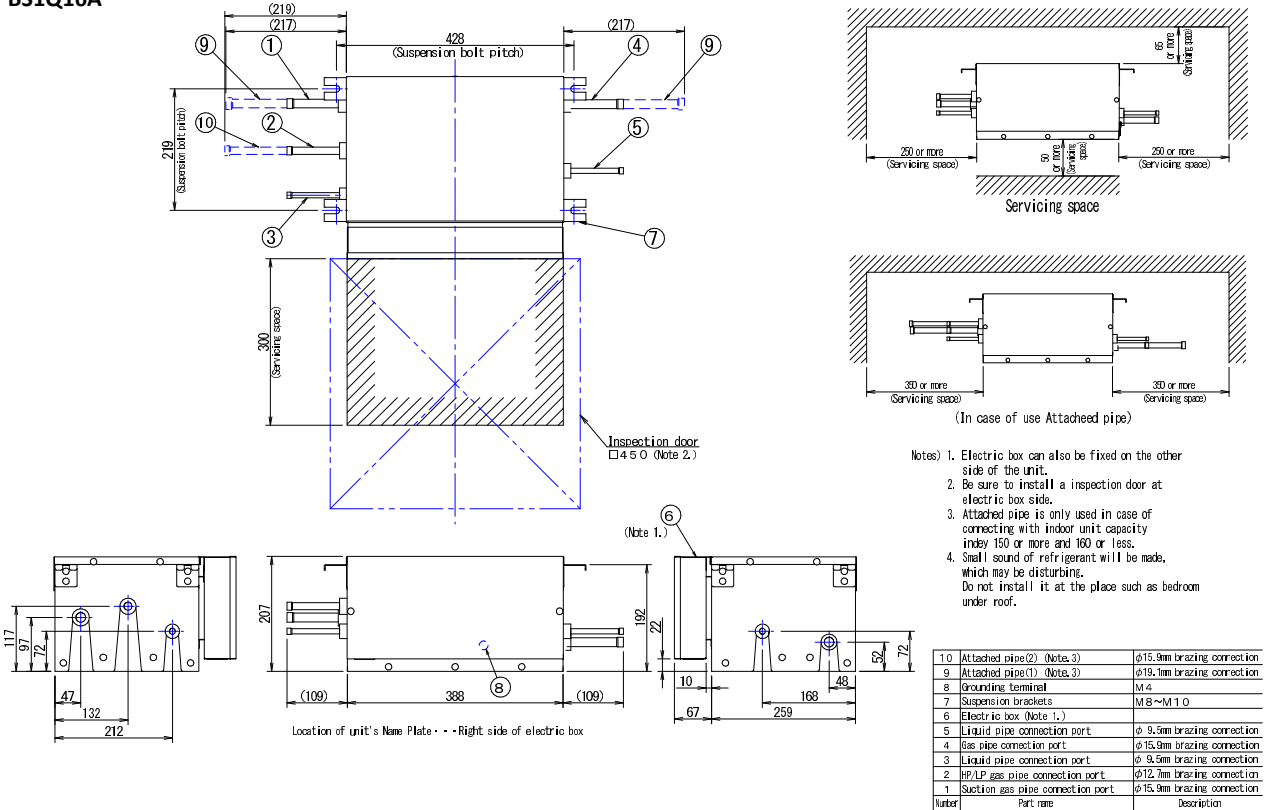
6 - 1 Dimensional Drawings

BS1Q10A



3D056011D

BS1Q16A

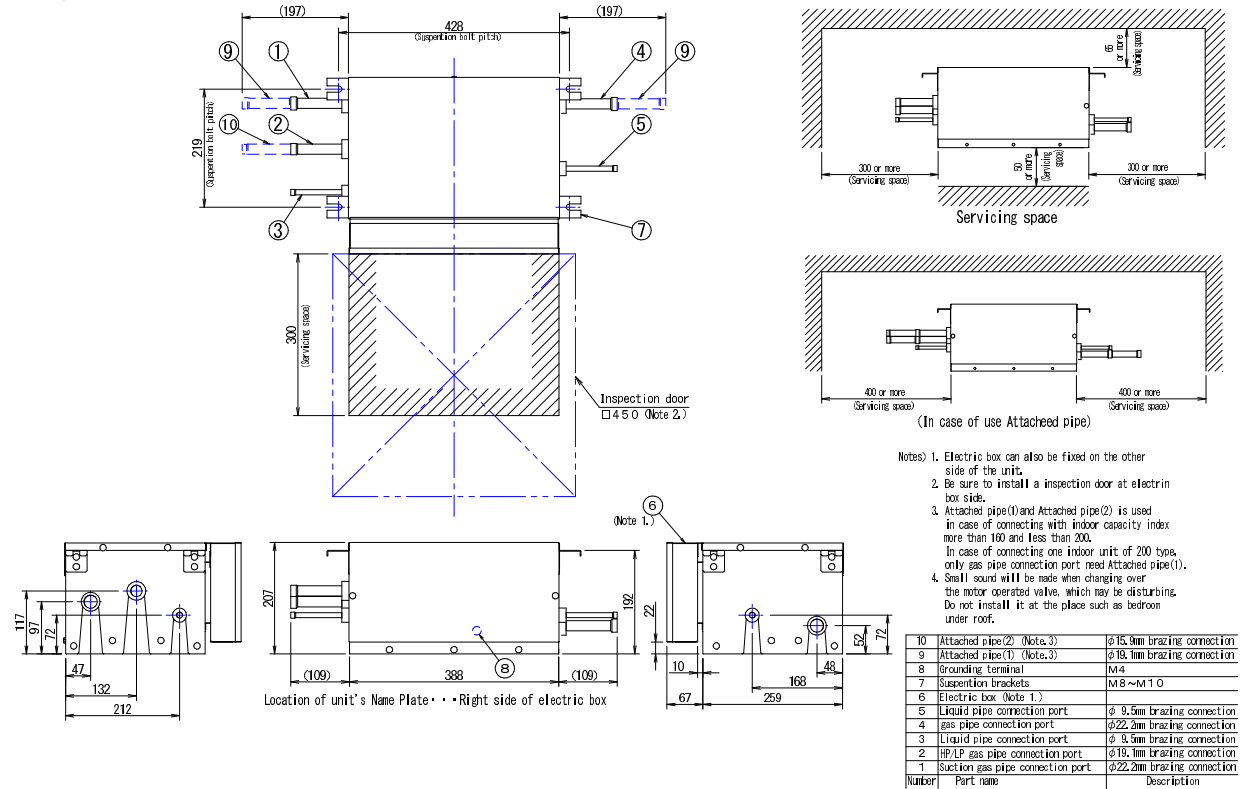


3D058004D

6 Dimensional drawings

6 - 1 Dimensional Drawings

BS1Q25A



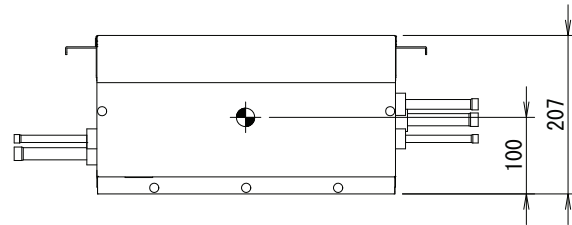
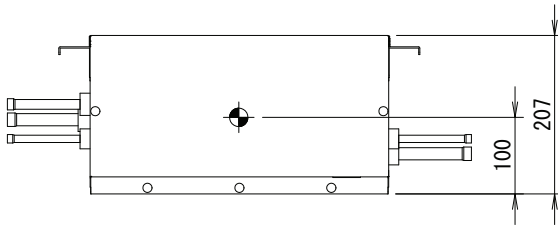
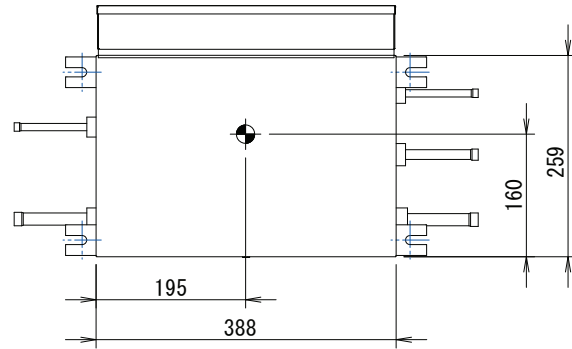
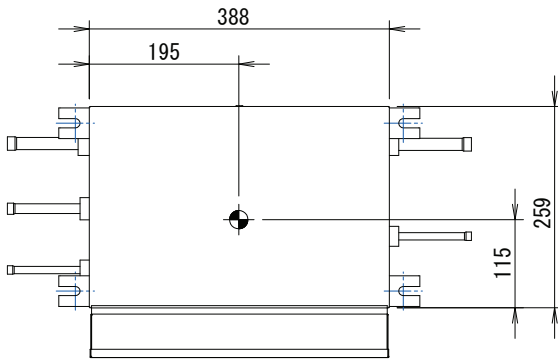
3D056012E

7 Centre of gravity

7 - 1 Centre of Gravity

BS1Q10-16A

VRV System Heat Recovery Series BS unit



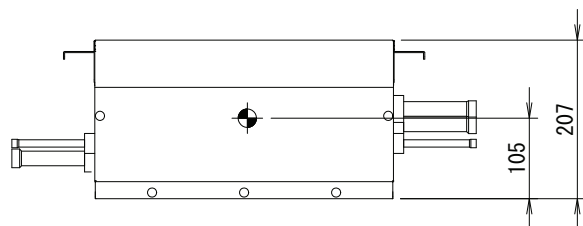
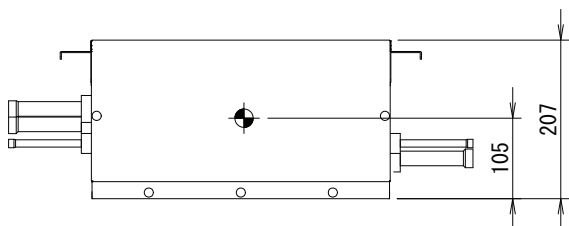
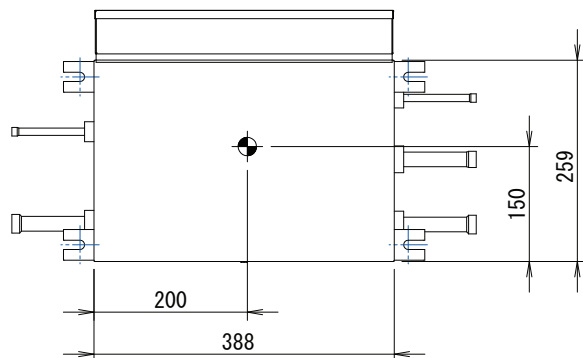
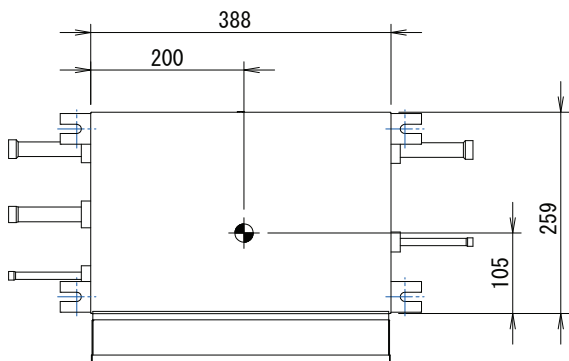
In case of the electrical box on the standard side of the unit

In case of the electrical box on the other side of the unit

3D058131B

BS1Q25A

VRV System Heat Recovery Series BS unit



In case of the electrical box on the standard side of the unit

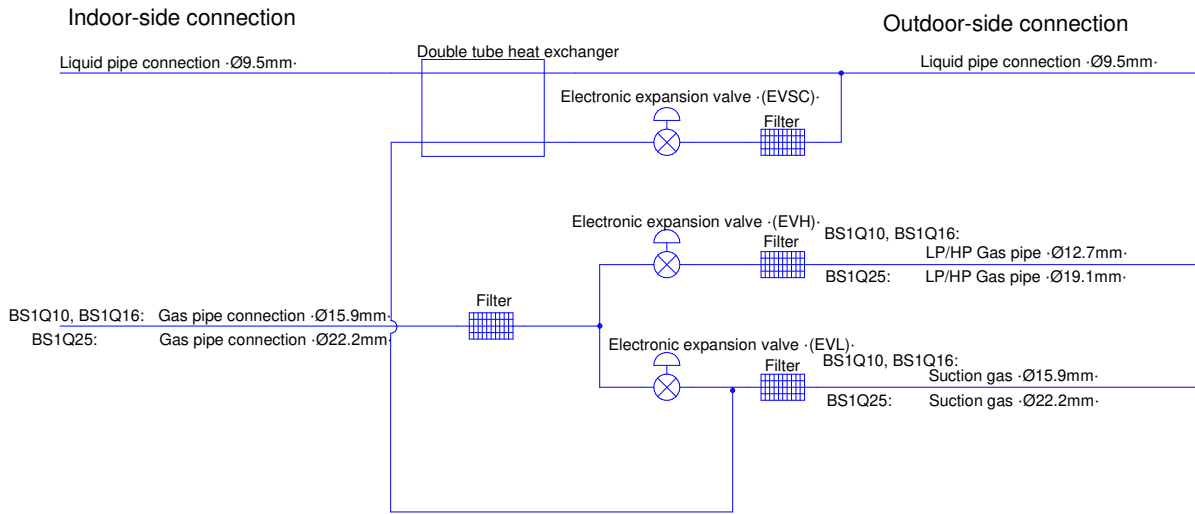
In case of the electrical box on the other side of the unit

3D058132B

8 Piping diagrams

8 - 1 Piping Diagrams

BS1Q-A



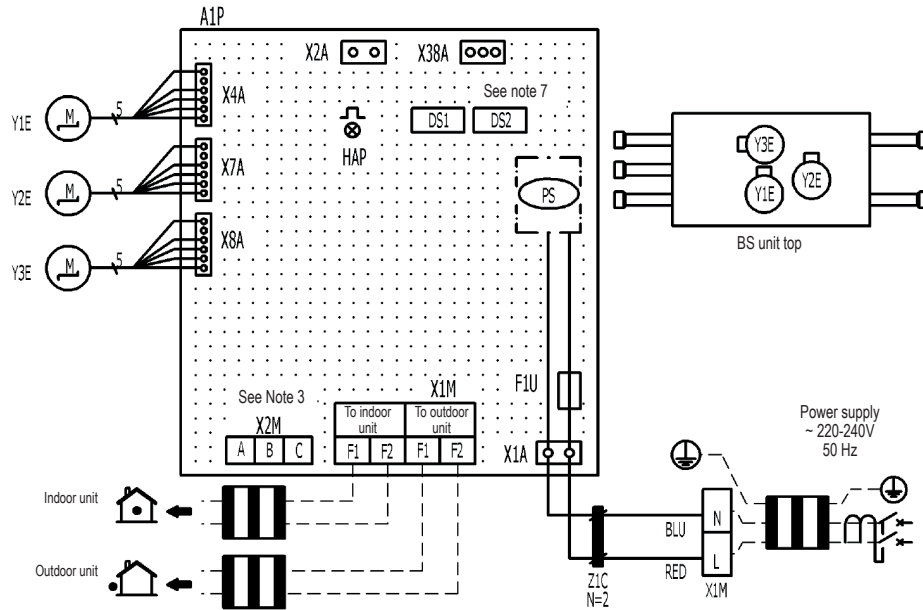
3D087576B

9 Wiring diagrams

9 - 1 Wiring Diagrams - Single Phase






BS1Q-A

Wiring Diagram



A1P	Printed circuit board	X1M	Terminal strip (power)	Y3E	Electric expansion valve (main suction)
DS1_DS2	DIP switch	X1M(A1P)	Terminal strip (control)	Z1C	Noise filter (ferrite core)
F1U	Fuse (T; 3.15A, 250V)	X2M	Terminal strip (C/H selector)		Connector for optional parts
HAP	Flashing lamp (service monitor-green)	Y1E	Electric expansion valve (sub cool)	X2A	Connector (wiring external control adapter for outdoor unit)
PS	Switching power supply	Y2E	Electric expansion valve (main discharge)	X38A	Connector (adapter for multi tenant)

NOTES

1. This wiring diagram applies to the BS unit only
2.  : Terminal strip,  : Connector,  : Terminal,  : Field wiring,  : Protective earth
3. When using the cool/heater selector (optional accessory), connect it to terminals A, B and C on X2M.
4. As for wiring to the indoor unit (F1) (F2) and outdoor unit (F1) (F2)
5. Symbols shows as follows: (BLU: Blue, RED: Red)
6. Use copper conductors only.
7. DIP Switch (DS1, DS2) initial settings are as follows:

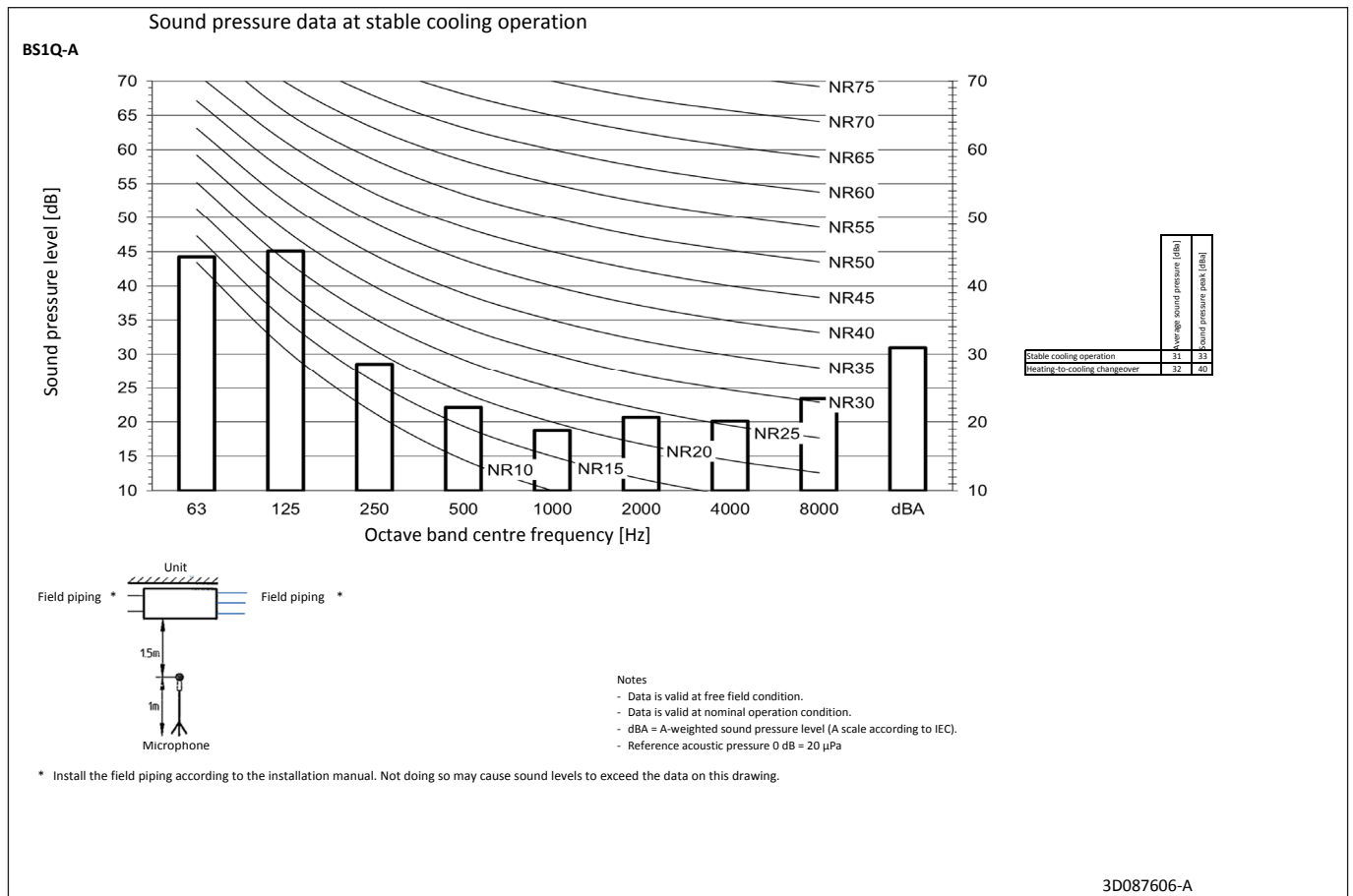


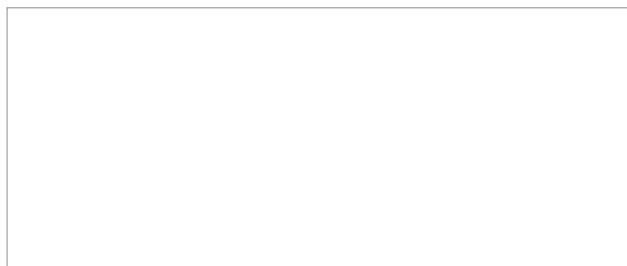
For using DIP Switch (DS1, DS2), refer to installation manual or "service precaution" label on EL Compo. box cover.

10 Sound data

10 - 1 Sound Pressure Spectrum

10





EEDEN22

09/2022



The present leaflet is drawn up by way of information only and does not constitute an offer binding upon Daikin Europe N.V. Daikin Europe N.V. has compiled the content of this leaflet to the best of its knowledge. No express or implied warranty is given for the completeness, accuracy, reliability or fitness for particular purpose of its content and the products and services presented therein. Specifications are subject to change without prior notice. Daikin Europe N.V. explicitly rejects any liability for any direct or indirect damage, in the broadest sense, arising from or related to the use and/or interpretation of this leaflet. All content is copyrighted by Daikin Europe N.V.